

Evidenzbericht: S3-Leitlinie „Adulte Weichgewebesarkome“

**IFOM - Institut für Forschung in der Operativen Medizin (Universität
Witten/Herdecke)**

**Jessica Breuing, Tim Mathes, Katharina Doni, Tanja Rombey, Barbara Prediger,
Dawid Pieper**

Datum: 03.07.2020

Kontakt:

Jessica Breuing
IFOM - Institut für Forschung in der Operativen Medizin
Univ.-Prof. Dr. Rolf Lefering
Fakultät für Gesundheit, Department für Humanmedizin
Universität Witten/Herdecke
Ostmerheimer Str. 200, Haus 38
51109 Köln

Tel.: 0221 98957-41
Fax: 0221 98957-30

Dr. Tim Mathes
IFOM - Institut für Forschung in der Operativen Medizin
Univ.-Prof. Dr. Rolf Lefering
Fakultät für Gesundheit, Department für Humanmedizin
Universität Witten/Herdecke
Ostmerheimer Str. 200, Haus 38
51109 Köln

Tel.: 0221 98957-43
Fax: 0221 98957-30

Inhalt

| | |
|--|----|
| 1. Literaturrecherche | 5 |
| 1.1. Einschlusskriterien Systemtherapie | 5 |
| 1.1.1. Neoadjuvante Systemtherapie (+ GIST)..... | 5 |
| 1.1.2. Adjuvante Systemtherapie (+ GIST)..... | 5 |
| 1.1.3. Therapie der metastasierten Erkrankung (+ GIST)..... | 6 |
| 1.2. Einschlusskriterien Chirurgie..... | 6 |
| 1.2.1. Ablation | 6 |
| 1.2.2. Hyperthermie..... | 6 |
| 1.2.3. OP | 7 |
| 1.2.4. Resektionsränder..... | 7 |
| 1.2.5. Strahlentherapie..... | 8 |
| 1.3. Einschlusskriterien Rehabilitation..... | 8 |
| 1.4. Einschlusskriterien Psychoonkologie..... | 8 |
| 1.5. Datenquellen und Suchstrategie | 9 |
| 1.5.1. Recherchestrategie Systemtherapie | 9 |
| 1.5.2. Recherchestrategie Systemtherapie-GIST..... | 12 |
| 1.5.3. Recherchestrategie Systemtherapie-GIST (adjuvante Imatinibtherapie) | 12 |
| 1.5.4. Recherchestrategie Chirurgie-Ablation | 13 |
| 1.5.5. Recherchestrategie Chirurgie-Hyperthermie..... | 17 |
| 1.5.6. Recherchestrategie Chirurgie-OP | 19 |
| 1.5.7. Recherchestrategie Chirurgie-Resektionsränder | 21 |
| 1.5.8. Recherchestrategie Chirurgie-Strahlentherapie | 24 |
| 1.5.9. Recherchestrategie Rehabilitation | 26 |
| 1.5.10. Recherchestrategie Psychoonkologie | 28 |
| 1.6. Studienselektion..... | 31 |
| 2. Bewertung des Vertrauens in die Evidenz gemäß GRADE..... | 31 |
| 3. Studienbewertung (Bewertung des Risikos für systematische Verzerrung)..... | 32 |
| 4. Datenextraktion und Durchführung von Metaanalysen | 32 |
| 5. Ergebnisse der Literaturrecherche | 33 |
| 6. Appendix..... | 39 |
| Appendix A: Level of Evidence nach GRADE..... | 39 |
| Appendix B: Cochrane Risk of Bias..... | 40 |
| Appendix C: Newcastle-Ottawa Quality Assessment Scale (NOS)..... | 41 |

| | |
|--|----|
| Appendix D: Liste der ausgeschlossenen Studien mit Gründen | 42 |
| Referenzen | 64 |

Abbildungsverzeichnis

| | |
|--|----|
| Abbildung 1: Flowchart Systemtherapie..... | 34 |
| Abbildung 2: Flowchart Systemtherapie-GIST..... | 34 |
| Abbildung 3: Flowchart Systemtherapie-GIST (adjuvante Imatinibtherapie)..... | 35 |
| Abbildung 4: Flowchart Chirurgie-Ablation..... | 35 |
| Abbildung 5: Flowchart Chirurgie-Hyperthermie..... | 36 |
| Abbildung 6: Flowchart Chirurgie-OP..... | 36 |
| Abbildung 7: Flowchart Chirurgie-Resektionsränder..... | 37 |
| Abbildung 8: Flowchart Chirurgie-Strahlentherapie..... | 37 |
| Abbildung 9: Flowchart Rehabilitation..... | 38 |
| Abbildung 10: Flowchart Psychoonkologie..... | 38 |

Tabellenverzeichnis

| | |
|---|----|
| Tabelle 1: Einschlusskriterien neoadjuvante Systemtherapie..... | 5 |
| Tabelle 2: Einschlusskriterien adjuvante Systemtherapie..... | 5 |
| Tabelle 3: Einschlusskriterien adjuvante Imatinibtherapie..... | 5 |
| Tabelle 4: Einschlusskriterien Therapie der metastasierten Erkrankung..... | 6 |
| Tabelle 5: Einschlusskriterien Ablation..... | 6 |
| Tabelle 6: Einschlusskriterien Hyperthermie..... | 6 |
| Tabelle 7: Einschlusskriterien OP..... | 7 |
| Tabelle 8: Einschlusskriterien Resektionsränder..... | 7 |
| Tabelle 9: Einschlusskriterien Strahlentherapie..... | 8 |
| Tabelle 10: Einschlusskriterien Rehabilitation..... | 8 |
| Tabelle 11: Einschlusskriterien Psychoonkologie..... | 8 |
| Tabelle 12: Suchstrategie Systemtherapie..... | 9 |
| Tabelle 13: Suchstrategie Systemtherapie-GIST..... | 12 |
| Tabelle 14: Suchstrategie Systemtherapie-GIST (adjuvante Imatinibtherapie)..... | 12 |
| Tabelle 15: Suchstrategie Chirurgie-Ablation..... | 13 |
| Tabelle 16: Suchstrategie Chirurgie-Hyperthermie..... | 17 |
| Tabelle 17: Suchstrategie Chirurgie-OP..... | 19 |
| Tabelle 18: Suchstrategie Chirurgie-Resektionsränder..... | 21 |
| Tabelle 19: Suchstrategie Chirurgie-Strahlentherapie..... | 24 |
| Tabelle 20: Suchstrategie Rehabilitation..... | 26 |
| Tabelle 21: Suchstrategie Psychoonkologie..... | 28 |



1. Literaturrecherche

Im Rahmen der S3-Leitlinie „Adulte Weichgewebesarkome“ wurden insgesamt vier Rechercheaufträge (Systemtherapie, Chirurgie, Rehabilitation und Psychoonkologie) durchgeführt. Diese sind im Fall der Systemtherapie und der Chirurgie noch in weitere Subthemen unterteilt. Der Rechercheauftrag Systemtherapie hat insgesamt drei Subthemen (Neoadjuvante Therapie, adjuvante Therapie und Therapie der metastasierten Erkrankung), der Rechercheauftrag Chirurgie fünf Subthemen (Ablation, Hyperthermie, OP, Resektionsränder, Strahlentherapie).

1.1. Einschlusskriterien Systemtherapie

Die Einschlusskriterien für die einzelnen Fragestellungen gemäß dem PICOS-Schema (Patienten, Intervention, Kontrolle, Outcome/Endpunkte und Studien) sind in Tabelle 1 bis 11 dargestellt. Dazu wurden zunächst die Endpunkte für die jeweilige Fragestellung priorisiert.

1.1.1. Neoadjuvante Systemtherapie (+ GIST)

Tabelle 1: Einschlusskriterien neoadjuvante Systemtherapie

| | |
|----------------------|--|
| Patienten/Population | Patienten mit lokalisiertem Weichgewebesarkom (alle Lokalisationen von Primärtumoren einschließlich GIST) |
| Intervention | Neoadjuvante Chemotherapie (Doxorubicin, Epirubicin, Ifosfamid, Dacarbazin, Imatinib, Sunitinib; auch in Verbindung mit Radiotherapie) |
| Comparison/Kontrolle | Keine Intervention (nur OP + perioperative Strahlentherapie) |
| Outcomes/Endpunkte | Rezidiv freies Überleben (lokal + systemisch) (wichtig) und Gesamtüberleben (kritisch), Nebenwirkungen (wichtig), Mortalität (wichtig), Spätfolgen (wichtig), QoL (gering) |
| Studientyp | Randomisierte kontrollierte Studien |

1.1.2. Adjuvante Systemtherapie (+ GIST)

Tabelle 2: Einschlusskriterien adjuvante Systemtherapie

| | |
|----------------------|---|
| Patienten/Population | Patienten mit lokalisiertem Weichgewebesarkom inclusive GIST (Gastrointestinale Stromatumoren) (alle Lokalisationen) |
| Intervention | Adjuvante Chemotherapie (Doxorubicin, Epirubicin, Ifosfamid, Dacarbazin) |
| Comparison/Kontrolle | Keine Intervention (nur OP + perioperative Strahlentherapie) |
| Outcomes/Endpunkte | Rezidiv freies Überleben (wichtig) und Gesamtüberleben (kritisch), Nebenwirkungen (wichtig), Mortalität (wichtig), Spätfolgen (wichtig), QoL (gering) |
| Studientyp | Randomisierte kontrollierte Studien |

Tabelle 3: Einschlusskriterien adjuvante Imatinibtherapie

| | |
|----------------------|---|
| Patienten/Population | Patienten mit histologisch gesichertem lokalisiertem GIST, Zustand nach R0-Resektion des Primärtumors + hohes Rückfallrisiko nach Miettinen&Lasota 2006 (Arch Path Lab) |
| Intervention | Imatinib 400 mg/Tag für 3 Jahre |
| Comparison/Kontrolle | Keine Intervention oder 1 Jahr Imatinib oder 2 Jahre Imatinib |

| | |
|--------------------|---|
| Outcomes/Endpunkte | Gesamtüberleben (kritisch), Rezidiv freies Überleben (wichtig), Nebenwirkungen (wichtig), Mortalität (wichtig), Spätfolgen (wichtig), QoL (wichtig) |
| Studientyp | Randomisierte kontrollierte Studien |

1.1.3. Therapie der metastasierten Erkrankung (+ GIST)

Tabelle 4: Einschlusskriterien Therapie der metastasierten Erkrankung

| | |
|----------------------|---|
| Patienten/Population | Patienten mit metastasiertem Weichgewebesarkom inclusive GIST (Gastrointestinale Stromatumoren) |
| Intervention | Medikamentöse Therapie (Doxorubicin, Ifosfamid, Trabectedin, Pazopanib, Eribulin, Olaratumab, Dacarbazin/DTIC, Gemcitabin, Docetaxel, Paclitaxel) |
| Comparison/Kontrolle | Andere medikamentöse Therapie, Placebo, oder keine Therapie |
| Outcomes/Endpunkte | Progression freies Überleben (kritisch) und Gesamtüberleben (kritisch), Nebenwirkungen (wichtig), Mortalität (gering), QoL (wichtig) |
| Studientyp | Randomisierte kontrollierte Studien |

1.2. Einschlusskriterien Chirurgie

1.2.1. Ablation

Tabelle 5: Einschlusskriterien Ablation

| | |
|----------------------|---|
| Patienten/Population | Patienten mit metastasiertem Weichgewebesarkom, Situation mit singulären Metastasen (Oligometastasierung) |
| Intervention | Lokalablativ Verfahren - Chirurgische Resektion - externe Strahlentherapie, stereotaktische Strahlentherapie SBRT - Thermische Ablation durch Radiofrequenz, Laser-induzierte Thermoablation, Mikrowellenablation, Kryotherapie - Selektive interne Radiotherapie/Radioembolisation bei Lebermetastasen vorwiegend bei GIST - Transvaskuläre Tumorablation (TACE, Alkoholinstillation) |
| Comparison/Kontrolle | Keine Therapie, Systemische Therapie allein, Chirurgische Resektion vs. Andere Verfahren (externe Radiotherapie/Thermische Ablation/TACE) |
| Outcomes/Endpunkte | Progressionsfreies Überleben (wichtig), Gesamtüberleben (kritisch), Morbidität/QoL (kritisch) |
| Studientyp | Randomisierte kontrollierte Studien, Systematische Reviews |

1.2.2. Hyperthermie

Tabelle 6: Einschlusskriterien Hyperthermie

| | |
|----------------------|---|
| Patienten/Population | Patienten mit lokalisiertem Weichgewebesarkom |
| Intervention | Tiefenhyperthermie induziert durch isolierte Organperfusion (extrakorporale Zirkulation) mit Zieltemperatur im Gewebe von >38°C oder durch externe Radiofrequenzapplikation |

| | |
|----------------------|---|
| | induzierte Gewebhyperthermie mit Zieltemperatur >42°C in Kombination mit Zytokinen + Chemotherapie oder Chemotherapie alleinig |
| Comparison/Kontrolle | Andere Intervention z.B. Strahlentherapie, oder alleinige Operation oder keine Intervention |
| Outcomes/Endpunkte | Rezidiv freies Überleben (lokal + systemisch, kritisch) und Gesamtüberleben (wichtig), Nebenwirkungen (gering), funktionelles Outcome (wichtig), Spätfolgen (wichtig) |
| Studientyp | Randomisierte kontrollierte Studien |

1.2.3. OP

Tabelle 7: Einschlusskriterien OP

| | |
|----------------------|--|
| Patienten/Population | Patienten mit lokalisiertem Weichgewebesarkom inclusive GIST (Gastrointestinale Stromatumoren) |
| Intervention | Operativer Eingriff, 1 (Weichgewebetumor Extremität): Kompartmentresektion, weite Resektion, lokale Excision, Amputation 2 (Weichgewebetumor retroperitoneal) Tumorextirpation/Resektion, multiviscerale Resektion 3 (viszerale Weichgewebetumoren incl. GIST) (Leiomyosarkome + GIST) Tumorresektion/Tumorektomie/Excision, multiviscerale Resektion, Segmentresektion 4 (Weichgewebetumor Stamm incl. Thoraxwand) |
| Comparison/Kontrolle | Zu 1: Verfahren gegeneinander, alleinige Strahlentherapie, alleinige Extremitätenperfusion, keine Intervention Zu 2: Verfahren gegeneinander, alleinige Strahlentherapie, alleinige Systemtherapie, keine Intervention Zu 3: nur Systemtherapie Imatinib bei GIST Zu 4: Verfahren gegeneinander, alleinige Strahlentherapie, alleinige Systemtherapie, keine Intervention |
| Outcomes/Endpunkte | Rezidiv freies Überleben (lokal + systemisch, kritisch), Gesamtüberleben (wichtig), funktionelles Outcome (wichtig) und lokale Rückfallrate (wichtig) |
| Studientyp | RCT, Metaanalysen, große Datenbanken und Register, single Institutions |

1.2.4. Resektionsränder

Tabelle 8: Einschlusskriterien Resektionsränder

| | |
|----------------------|--|
| Patienten/Population | Patienten mit lokalisiertem, primärem Weichgewebesarkom und GIST (Gastronintestinalen Stromatumoren) |
| Intervention | Resektionstypen siehe PICO Frage 1 R0-Resektion, knappster Sicherheitsabstand am Resektat zum Tumor in cm (Kategorien <1cm, > 1cm, > 2cm Resektionsränder) |

| | |
|----------------------|--|
| Comparison/Kontrolle | R1 Resektion, R0-Resektion mit Sicherheitsabstand <5mm, sog. qualitativer Sicherheitsabstand zu unterschiedlichen Strukturen bei unterschiedlichen Tumortypen, Amputation Andere Intervention oder keine Intervention |
| Outcomes/Endpunkte | Rezidivrate kritisch, rezidivfreies Überleben wichtig, Gesamtüberleben wichtig, funktionelles Ergebnis wichtig |
| Studientyp | RCT, Metaanalysen, große Datenbanken und Register, Systematische Reviews |

1.2.5. Strahlentherapie

Tabelle 9: Einschlusskriterien Strahlentherapie

| | |
|----------------------|--|
| Patienten/Population | Patienten mit lokalisiertem Weichgewebesarkom |
| Intervention | Adjuvante/postoperative Strahlentherapie; neoadjuvante/präoperative Strahlentherapie, intraoperative Strahlentherapie (IORT), Brachytherapie |
| Comparison/Kontrolle | Andere Intervention oder keine Intervention oder präoperative versus postoperative Strahlentherapie oder perkutane Strahlentherapie versus perkutane Strahlentherapie + IORT |
| Outcomes/Endpunkte | Lokale Rückfallrate (kritisch), Rezidiv freies Überleben (gering) und Gesamtüberleben (wichtig), Nebenwirkungen (gering), Spätfolgen (wichtig), funktionelles Outcome (kritisch) |
| Studientyp | RCT, Systematische Reviews |

1.3. Einschlusskriterien Rehabilitation

Tabelle 10: Einschlusskriterien Rehabilitation

| | |
|----------------------|--|
| Patienten/Population | Patienten mit lokalisiertem Weichgewebesarkom nach durchgeführter Operation |
| Intervention | medizinische Rehabilitation stationär / ambulant (multimodale Intervention: Physiotherapie, Sporttherapie, Ergotherapie, Psychoedukation, medizinisch-berufliche Rehabilitation) |
| Comparison/Kontrolle | keine Intervention |
| Outcomes/Endpunkte | Funktionelle Outcomes (wichtig), Lebensqualität (wichtig), Return-to-Work-Rate (gering) |
| Studientyp | Vergleichende Studien |

1.4. Einschlusskriterien Psychoonkologie

Tabelle 11: Einschlusskriterien Psychoonkologie

| | |
|----------------------|--|
| Patienten/Population | Patienten mit lokalisiertem und metastasiertem Weichgewebesarkom |
| Intervention | Psychoonkologische Intervention |
| Comparison/Kontrolle | Andere Intervention oder keine Intervention |
| Outcomes/Endpunkte | Funktionelle Outcomes und Lebensqualität |
| Studientyp | Vergleichende Studien |

1.5. Datenquellen und Suchstrategie

Für sämtliche Fragestellungen wurde eine systematische Literaturrecherche in den Datenbanken Medline (via PubMed) und Embase (via Embase) durchgeführt. Die Tabellen 11-18 enthalten die Suchstrategien für die jeweiligen Fragestellungen, das Datum der Recherche und die Anzahl an Treffern in den elektronischen Datenbanken. Zur Identifikation weiterer relevanter Literatur wurden die Referenzen der eingeschlossenen Studien und systematischen Reviews zu verwandten Fragestellungen geprüft.

1.5.1. Recherchestrategie Systemtherapie

Datum der Recherche: 07.07.2017 (Medline), 05.07.2017 (Embase)

Tabelle 12: Suchstrategie Systemtherapie

| Suchstrategie Medline (via PubMed) | Treffer |
|---|---------|
| ("Hemangioendothelioma, Epithelioid"[Mesh] OR "Kaposiform Hemangioendothelioma"[Supplementary Concept] OR "Gastrointestinal Stromal Tumors"[Mesh] OR "Endometrial Stromal Tumors"[Mesh] OR "Sarcoma, Endometrial Stromal"[Mesh] OR "Malignant mesenchymal tumor"[Supplementary Concept] OR "Chondrosarcoma"[Mesh] OR "Chondrosarcoma, Mesenchymal"[Mesh] OR "Desmoplastic Small Round Cell Tumor"[Mesh] OR "Fibrosarcoma"[Mesh] OR "Dermatofibrosarcoma"[Mesh] OR "Hemangiosarcoma"[Mesh] OR "Histiocytoma, Malignant Fibrous"[Mesh] OR "Leiomyosarcoma"[Mesh] OR "Liposarcoma"[Mesh] OR "Liposarcoma, Myxoid"[Mesh] OR "Myosarcoma"[Mesh] OR "Rhabdomyosarcoma"[Mesh] OR "Rhabdomyosarcoma, Alveolar"[Mesh] OR "Myxosarcoma"[Mesh] OR "Osteosarcoma"[Mesh] OR "Sarcoma, Ewing"[Mesh] OR "Sarcoma, Alveolar Soft Part"[Mesh] OR "Sarcoma, Clear Cell"[Mesh] OR "Sarcoma, Kaposi"[Mesh] OR "Sarcoma, Myeloid"[Mesh] OR "Sarcoma, Small Cell"[Mesh] OR "Sarcoma, Synovial"[Mesh] OR sarcoma* [tiab] OR soft tissue sarcoma* [tiab] OR soft-tissue sarcoma* [tiab] OR liposarcoma* [tiab] OR leiomyosarcoma* [tiab] OR haemangioendotheliosarcoma* [tiab] OR hemangioendotheliosarcoma* [tiab] OR haemangioendothelioma* [tiab] OR hemangioendothelioma* [tiab] OR haemangiosarcoma* [tiab] OR hemangiosarcoma* [tiab] OR angiosarcoma* [tiab] OR angioendothelioma* [tiab] OR kaposi sarcoma* [tiab] OR kaposis sarcoma* [tiab] OR kaposi`s sarcoma* [tiab] OR kaposiform hemangioendothelioma* [tiab] OR kaposiform haemangioendothelioma* [tiab] OR gastrointestinal stromal tumor* [tiab] OR gastrointestinal stromal tumor* [tiab] OR pleomorphic sarcoma* [tiab] OR spindle cell sarcoma* [tiab] OR round cell sarcoma* [tiab] OR epithelioid sarcoma* [tiab] OR undifferentiated sarcoma* [tiab] OR dedifferentiated sarcoma* [tiab] OR endometrial stromal sarcoma* [tiab] OR rhabdomyosarcoma* [tiab] OR myxofibrosarcoma* [tiab] OR fibrosarcoma* [tiab] OR myofibroblastic sarcoma* [tiab] OR malignant fibrous histiocytoma* [tiab] OR fibroblastoma* [tiab] OR fibrous tumor* [tiab] OR fibrous tumor* [tiab] OR malignant glomus tumor* [tiab] OR malignant glomus tumor* [tiab] OR myofibromatosis [tiab] OR malignant peripheral nerve sheath tumor* [tiab] OR malignant peripheral nerve sheath tumor* [tiab] OR intima sarcoma* [tiab] OR intimal sarcoma* [tiab] OR epithelioid sarcoma* [tiab] OR desmoplastic small round cell tumor* [tiab] OR desmoplastic small round cell tumor* [tiab] OR clear cell tumor* [tiab] OR clear cell tumor* [tiab] OR clear cell sarcoma* [tiab] | 1.319 |

| | |
|--|-----------------------|
| <p>OR alveolar soft tissue sarcoma* [tiab] OR alveolar soft part sarcoma* [tiab] OR malignant mesenchymoma* [tiab] OR synovial sarcoma* [tiab] OR ewing sarcoma* [tiab] OR ewings sarcoma* [tiab] OR ewing`s sarcoma* [tiab] OR chondrosarcoma* [tiab] OR osteosarcoma* [tiab] OR extra-renal rhabdoid tumor* [tiab] OR extra-renal rhabdoid tumor* [tiab])</p> <p>AND ("Ifosfamide"[Mesh] OR "Dacarbazine"[Mesh] OR "Doxorubicin"[Mesh] OR "Epirubicin"[Mesh] OR "trabectedin" [Supplementary Concept] OR "pazopanib" [Supplementary Concept] OR "eribulin" [Supplementary Concept] OR "olaratumab" [Supplementary Concept] OR "gemcitabine" [Supplementary Concept] OR "docetaxel" [Supplementary Concept] OR "Paclitaxel"[Mesh] OR "Neoadjuvant Therapy"[Mesh] OR "Chemotherapy, Adjuvant"[Mesh] OR ifosfamid* [tiab] OR ifex [tiab] OR holoxan [tiab] OR mitoxana [tiab] OR iphosphamid* [tiab] OR isosfamid* [tiab] OR isofosfamid* [tiab] OR isophosphamid* [tiab] OR dacarbazin* [tiab] OR dacarbacin* [tiab] OR DTIC [tiab] OR deticine [tiab] OR DIC [tiab] OR DTCl [tiab] OR biocarbazin* [tiab] OR doxorubicin* [tiab] OR adriamycin* [tiab] OR caelyx [tiab] OR hydroxydaunorubicin* [tiab] OR epirubicin* [tiab] OR trabectedin* [tiab] OR yondelis [tiab] OR ecteinascidin [tiab] OR trabectidin* [tiab] OR pazopanib* [tiab] OR votrient [tiab] OR eribulin [tiab] OR halaven [tiab] OR olaratumab [tiab] OR lartruvo [tiab] OR gemcitabin* [tiab] OR docetaxel [tiab] OR TXL [tiab] OR paclitaxel [tiab] OR taxol [tiab] OR abraxane [tiab] OR ((adjuvant [tiab] OR neoadjuvant [tiab]) AND chemotherap* [tiab]) OR ((adjuvant [tiab] OR neoadjuvant [tiab]) AND therap* [tiab]) OR ((antineoplastic [tiab] OR anticancer [tiab]) AND therap* [tiab]) OR ((adjuvant [tiab] OR neoadjuvant [tiab]) AND treatment* [tiab]))</p> <p>AND ((randomized controlled trial[pt] OR controlled clinical trial[pt] OR randomized[tiab] OR randomized[tiab] OR placebo[tiab] OR clinical trials as topic[mesh:noexp] OR randomly[tiab] OR trial[ti] NOT (animals[mh] NOT humans [mh])))</p> <p>AND (english [la] OR german [la])</p> <p>NOT ("Comment" [Publication Type] OR "Letter" [Publication Type] OR "Editorial" [Publication Type])</p> | |
| <p>Suchstrategie Embase (via Embase)</p> | <p>Treffer</p> |
| <p>'soft tissue sarcoma'/exp OR 'hemangioendothelioma'/exp OR 'kaposiform hemangioendothelioma'/exp OR 'gastrointestinal stromal tumor'/exp OR 'endometrium sarcoma'/exp OR 'endometrial stromal tumor'/exp OR 'malignant mesenchymoma'/exp OR 'chondrosarcoma'/exp OR 'desmoplastic small round cell tumor'/exp OR 'fibrosarcoma'/exp OR 'dermatofibrosarcoma protuberans'/exp OR 'angiosarcoma'/exp OR 'leiomyosarcoma'/exp OR 'myosarcoma'/exp OR 'rhabdomyosarcoma'/exp OR 'osteosarcoma'/exp OR 'ewing sarcoma'/exp OR 'clear cell sarcoma'/exp OR 'kaposi sarcoma'/exp OR 'granulocytic sarcoma'/exp OR 'small cell sarcoma'/exp OR sarcoma*:ab,ti OR "soft tissue sarcoma*":ab,ti OR "soft-tissue sarcoma*":ab,ti OR liposarcoma*:ab,ti OR leiomyosarcoma*:ab,ti OR haemangioendotheliosarcoma*:ab,ti OR hemangioendotheliosarcoma*:ab,ti OR haemangioendothelioma*:ab,ti OR he-</p> | <p>576</p> |

mangioendothelioma*:ab,ti OR haemangiosarcoma*:ab,ti OR hemangiosarcoma*:ab,ti OR angiosarcoma*:ab,ti OR angioendothelioma*:ab,ti OR "kaposi sarcoma*":ab,ti OR "kaposi sarcoma*":ab,ti OR "kaposi's sarcoma*":ab,ti OR "kaposiform hemangioendothelioma*":ab,ti OR "kaposiform haemangioendothelioma*":ab,ti OR "gastrointestinal stromal tumor*":ab,ti OR "gastrointestinal stromal tumor*":ab,ti OR "pleomorphic sarcoma*":ab,ti OR "spindle cell sarcoma*":ab,ti OR "round cell sarcoma*":ab,ti OR "epitheloid sarcoma*":ab,ti OR "undifferentiated sarcoma*":ab,ti OR "dedifferentiated sarcoma*":ab,ti OR "endometrial stromal sarcoma*":ab,ti OR rhabdomyosarcoma*:ab,ti OR myxofibrosarcoma*:ab,ti OR fibrosarcoma*:ab,ti OR "myofibroplastic sarcoma*":ab,ti OR "malignant fibrous histiocytoma*":ab,ti OR fibroblastoma*:ab,ti OR "fibrous tumor*":ab,ti OR "fibrous tumor*":ab,ti OR "malignant glomus tumor*":ab,ti OR "malignant glomus tumor*":ab,ti OR myofibromatosis:ab,ti OR "malignant peripheral nerve sheath tumor*":ab,ti OR "malignant peripheral nerv sheath tumor*":ab,ti OR "intima sarcoma*":ab,ti OR "intimal sarcoma*":ab,ti OR "epitheloid sarcoma*":ab,ti OR "desmoplastic small round cell tumor*":ab,ti OR "desmoplastic small round cell tumor*":ab,ti OR "clear cell tumor*":ab,ti OR "clear cell tumor*":ab,ti OR "clear cell sarcoma*":ab,ti OR "alveolar soft tissue sarcoma*":ab,ti OR "alveolar soft part sarcoma*":ab,ti OR "malignant mesenchymoma*":ab,ti OR "synovial sarcoma*":ab,ti OR "ewing sarcoma*":ab,ti OR "ewings sarcoma*":ab,ti OR "ewing`s sarcoma*":ab,ti OR chondrosarcoma*:ab,ti OR osteosarcoma*:ab,ti OR "extra-renal rhabdoid tumor*":ab,ti OR "extra-renal rhabdoid tumor*":ab,ti

AND 'ifosfamide'/exp OR 'dacarbazine'/exp OR 'doxorubicin'/exp OR 'epirubicin'/exp OR 'trabectedin'/exp OR 'pazopanib'/exp OR 'eribulin'/exp OR 'olartumab'/exp OR 'gemcitabine'/exp OR 'docetaxel'/exp OR 'paclitaxel'/exp OR 'adjuvant chemotherapy'/exp OR 'neoadjuvant therapy'/exp OR ifosfamid*:ab,ti OR ifex:ab,ti OR holoxan:ab,ti OR mitoxana:ab,ti OR iphosphamid*:ab,ti OR isosfamid*:ab,ti OR isofosfamid*:ab,ti OR isophosphamid*:ab,ti OR dacarbazin*:ab,ti OR dacarbacin*:ab,ti OR dtic:ab,ti OR deticene:ab,ti OR dic:ab,ti OR dtci:ab,ti OR biocarbacin*:ab,ti OR doxorubicin*:ab,ti OR adriamycin:ab,ti OR caelyx:ab,ti OR hydroxydaunorubicin*:ab,ti OR epirubicin:ab,ti OR trabectedin:ab,ti OR yondelis:ab,ti OR ecteinascidin:ab,ti OR trabectidin:ab,ti OR pazopanib:ab,ti OR votrient:ab,ti OR eribulin:ab,ti OR halaven:ab,ti OR olartumab:ab,ti OR lartruvo:ab,ti OR gemcitabin:ab,ti OR docetaxel:ab,ti OR txl:ab,ti OR paclitaxel:ab,ti OR taxol:ab,ti OR abraxane:ab,ti OR ((adjuvant:ab,ti OR neoadjuvant:ab,ti) AND (chemotherap*:ab,ti)) OR ((adjuvant:ab,ti OR neoadjuvant:ab,ti) AND (therap*:ab,ti)) OR ((antineoplastic:ab,ti OR anticancer:ab,ti) AND (therap*:ab,ti)) OR ((adjuvant:ab,ti OR neoadjuvant:ab,ti) AND (treatment*:ab,ti))

AND (random*:ab,ti OR placebo*:de,ab,ti OR (double NEXT/1 blind*):ab,ti)

AND (English:la OR german:la)

AND [embase]/lim

NOT ("Comment":it OR "Letter":it OR "Editorial":it)

| | |
|-------------------------------------|--|
| AND embase NOT (embase AND medline) | |
|-------------------------------------|--|

1.5.2. Recherchestrategie Systemtherapie-GIST

Datum der Recherche: 02.11.2017

Tabelle 13: Suchstrategie Systemtherapie-GIST

| Suchstrategie Medline (via PubMed) | Treffer |
|---|---------|
| "Gastrointestinal Stromal Tumors"[Mesh] OR gastrointestinal stromal tumor* [tiab] OR gastrointestinal stromal tumour* [tiab] OR GIST [tiab] AND "Imatinib Mesylate"[Mesh] OR "sunitinib" [Supplementary Concept] OR "regorafenib" [Supplementary Concept] OR imatinib [tiab] OR sunitinib [tiab] OR regorafenib [tiab] AND ((randomized controlled trial[pt] OR controlled clinical trial[pt] OR randomized[tiab] OR randomised[tiab] OR placebo[tiab] OR clinical trials as topic[mesh:noexp] OR randomly[tiab] OR trial[ti] NOT (animals[mh] NOT humans [mh]))) AND (english [la] OR german [la]) NOT ("Comment" [Publication Type] OR "Letter" [Publication Type] OR "Editorial" [Publication Type]) | 311 |
| Suchstrategie Embase (via Embase) | Treffer |
| 'gastrointestinal stromal tumor'/exp OR "gastrointestinal stromal tumor*":ab,ti OR "gastrointestinal stromal tumour*":ab,ti OR "GIST":ab,ti AND 'imatinib'/exp OR 'sunitinib'/exp OR 'regorafenib'/exp OR imatinib:ab,ti OR sunitinib:ab,ti OR regorafenib:ab,ti AND (random*:ab,ti OR placebo*:de,ab,ti OR (double NEXT/1 blind*):ab,ti) AND (English:la OR german:la) AND [embase]/lim NOT ("Comment":it OR "Letter":it OR "Editorial":it) AND embase NOT (embase AND medline) | 144 |

1.5.3. Recherchestrategie Systemtherapie-GIST (adjuvante Imatinibtherapie)

Datum der Recherche: 04.11.2019

Tabelle 14: Suchstrategie Systemtherapie-GIST (adjuvante Imatinibtherapie)

| Suchstrategie Medline (via Embase) | Treffer |
|---|---------|
| "Gastrointestinal Stromal Tumors"[Mesh] OR gastrointestinal stromal tumor* [tiab] OR gastrointestinal stromal tumour* [tiab] OR GIST [tiab] | 208 |

| | |
|---|----------------|
| <p>AND ("Imatinib Mesylate"[Mesh] OR imatinib*[tiab] OR gleevac[tiab] OR gleevec[tiab] OR glivec[tiab])</p> <p>AND ("Time Factors"[Mesh] OR time factor*[tiab] OR timing[tiab] OR time[tiab] OR duration[tiab] OR period[tiab] OR length[tiab] OR long[tiab] OR short*[tiab] OR extend*[tiab] OR prolong*[tiab] OR continue*[tiab] OR schedule[tiab] OR year*[tiab] OR month*[tiab])</p> <p>AND ((randomized controlled trial[pt] OR controlled clinical trial[pt] OR randomized[tiab] OR randomised[tiab] OR placebo[tiab] OR clinical trials as topic[mesh:noexp] OR randomly[tiab] OR trial[ti] NOT (animals[mh] NOT humans[mh])))</p> <p>AND (english [la] OR german [la])</p> <p>NOT ("Comment" [Publication Type] OR "Letter" [Publication Type] OR "Editorial" [Publication Type])</p> | |
| Suchstrategie Embase (via Embase) | Treffer |
| <p>'gastrointestinal stromal tumor'/exp OR "gastrointestinal stromal tumor*":ti,ab,kw OR "gastrointestinal stromal tumour*":ti,ab,kw OR "GIST":ti,ab,kw</p> <p>AND ('imatinib'/exp OR (imatinib OR gleevac OR gleevec OR glivec):ti,ab,kw)</p> <p>AND ('time factor'/exp OR (time factor\$ OR timing OR time OR duration OR period OR length OR long OR short* OR extend* OR prolong* OR continue* OR schedule OR year\$ OR month\$):ti,ab,kw)</p> <p>AND (random*:ab,ti OR placebo*:de,ab,ti OR (double NEXT/1 blind*):ab,ti)</p> <p>AND (English:la OR german:la)</p> <p>NOT ("Comment":it OR "Letter":it OR "Editorial":it)</p> | 339 |

1.5.4. Recherchestrategie Chirurgie-Ablation

Datum der Recherche: 15.12.2017 (Medline), 19.12.2017 (Embase)

Tabelle 15: Suchstrategie Chirurgie-Ablation

| | |
|---|----------------|
| Suchstrategie Medline (via PubMed) | Treffer |
| <p>("Hemangioendothelioma, Epithelioid"[Mesh] OR "Kaposiform Hemangioendothelioma"[Supplementary Concept] OR "Gastrointestinal Stromal Tumors"[Mesh] OR "Endometrial Stromal Tumors"[Mesh] OR "Sarcoma, Endometrial Stromal"[Mesh] OR "Malignant mesenchymal tumor"[Supplementary Concept] OR "Chondrosarcoma"[Mesh] OR "Chondrosarcoma, Mesenchymal"[Mesh] OR "Desmoplastic Small Round Cell Tumor"[Mesh] OR "Fibrosarcoma"[Mesh] OR "Dermatofibrosarcoma"[Mesh] OR "Hemangiosarcoma"[Mesh] OR "Histiocytoma, Malignant Fibrous"[Mesh] OR "Leiomyosar-</p> | 460 |

coma"[Mesh] OR "Liposarcoma"[Mesh] OR "Liposarcoma, Myxoid"[Mesh] OR "Myosarcoma"[Mesh] OR "Rhabdomyosarcoma"[Mesh] OR "Rhabdomyosarcoma, Alveolar"[Mesh] OR "Myxosarcoma"[Mesh] OR "Osteosarcoma"[Mesh] OR "Sarcoma, Ewing"[Mesh] OR "Sarcoma, Alveolar Soft Part"[Mesh] OR "Sarcoma, Clear Cell"[Mesh] OR "Sarcoma, Kaposi"[Mesh] OR "Sarcoma, Myeloid"[Mesh] OR "Sarcoma, Small Cell"[Mesh] OR "Sarcoma, Synovial"[Mesh] OR sarcoma* [tiab] OR soft tissue sarcoma* [tiab] OR soft-tissue sarcoma* [tiab] OR liposarcoma* [tiab] OR leiomyosarcoma* [tiab] OR haemangioendotheliosarcoma* [tiab] OR hemangioendotheliosarcoma* [tiab] OR haemangioendothelioma* [tiab] OR hemangioendothelioma* [tiab] OR haemangiosarcoma* [tiab] OR hemangiosarcoma* [tiab] OR angiosarcoma* [tiab] OR angioendothelioma* [tiab] OR kaposi sarcoma* [tiab] OR kaposi sarcoma* [tiab] OR kaposi's sarcoma* [tiab] OR kaposiform hemangioendothelioma* [tiab] OR kaposiform haemangioendothelioma* [tiab] OR gastrointestinal stromal tumor* [tiab] OR gastrointestinal stromal tumor* [tiab] OR "GIST"[tiab] OR "GISTs"[tiab] OR "EGIST"[tiab] OR "EGISTs"[tiab] OR "DGIST"[tiab] OR "DGISTs"[tiab] OR pleomorphic sarcoma* [tiab] OR spindle cell sarcoma* [tiab] OR round cell sarcoma* [tiab] OR epithelioid sarcoma* [tiab] OR undifferentiated sarcoma* [tiab] OR dedifferentiated sarcoma* [tiab] OR endometrial stromal sarcoma* [tiab] OR rhabdomyosarcoma* [tiab] OR myxofibrosarcoma* [tiab] OR fibrosarcoma* [tiab] OR myofibroblastic sarcoma* [tiab] OR malignant fibrous histiocytoma* [tiab] OR fibroblastoma* [tiab] OR fibrous tumor* [tiab] OR fibrous tumor* [tiab] OR malignant glomus tumor* [tiab] OR malignant glomus tumor* [tiab] OR myofibromatosis [tiab] OR malignant peripheral nerve sheath tumor* [tiab] OR malignant peripheral nerve sheath tumor* [tiab] OR intima sarcoma* [tiab] OR intimal sarcoma* [tiab] OR epithelioid sarcoma* [tiab] OR desmoplastic small round cell tumor* [tiab] OR desmoplastic small round cell tumor* [tiab] OR clear cell tumor* [tiab] OR clear cell tumor* [tiab] OR clear cell sarcoma* [tiab] OR alveolar soft tissue sarcoma* [tiab] OR alveolar soft part sarcoma* [tiab] OR malignant mesenchymoma* [tiab] OR synovial sarcoma* [tiab] OR ewing sarcoma* [tiab] OR ewings sarcoma* [tiab] OR ewing's sarcoma* [tiab] OR chondrosarcoma* [tiab] OR osteosarcoma* [tiab] OR extra-renal rhabdoid tumor* [tiab] OR extra-renal rhabdoid tumor* [tiab])

AND "Neoplasm Metastasis"[Mesh] OR metasta*[tiab] OR oligometasta*[tiab]

AND resection [tiab] OR resections [tiab] OR excision [tiab] OR excisions [tiab] OR "Radiotherapy"[Mesh] OR radiotherapy[tiab] OR radiotherapies[tiab] OR radiation[tiab] OR stereotactic body radiotherapy[tiab] OR SBRT[tiab] OR radioembolisation*[tiab] OR radioembolization*[tiab] OR "Chemoembolization, Therapeutic"[Mesh] OR chemoembolisation*[tiab] OR chemoembolization*[tiab] OR transarterial chemoembolization[tiab] OR TACE[tiab] OR "Ablation Techniques"[Mesh] OR ablation*[tiab] OR thermotherap*[tiab] OR "Cryotherapy"[Mesh] OR cryotherap*[tiab] OR alcohol instillation*[tiab] OR ethanol instillation*[tiab]

AND (medline OR "systematic review" OR meta-analysis[pt] OR intervention[ti]) OR (randomized controlled trial[pt] OR controlled clinical trial[pt] OR randomized[tiab] OR randomized[tiab] OR placebo[tiab] OR clinical trials as

| | |
|---|-----------------------|
| <p>topic[mesh:noexp] OR randomly[tiab] OR trial[ti] NOT (animals[mh] NOT humans [mh]))</p> <p>AND (english [la] OR german [la])</p> <p>NOT ("Comment" [Publication Type] OR "Letter" [Publication Type] OR "Editorial" [Publication Type])</p> | |
| <p>Suchstrategie Embase (via Embase)</p> | <p>Treffer</p> |
| <p>'soft tissue sarcoma'/exp OR 'hemangioendothelioma'/exp OR 'kaposiform hemangioendothelioma'/exp OR 'gastrointestinal stromal tumor'/exp OR 'endometrium sarcoma'/exp OR 'endometrial stromal tumor'/exp OR 'malignant mesenchymoma'/exp OR 'chondrosarcoma'/exp OR 'desmoplastic small round cell tumor'/exp OR 'fibrosarcoma'/exp OR 'dermatofibrosarcoma protuberans'/exp OR 'angiosarcoma'/exp OR 'leiomyosarcoma'/exp OR 'myosarcoma'/exp OR 'rhabdomyosarcoma'/exp OR 'osteosarcoma'/exp OR 'ewing sarcoma'/exp OR 'clear cell sarcoma'/exp OR 'kaposi sarcoma'/exp OR 'granulocytic sarcoma'/exp OR 'small cell sarcoma'/exp OR sarcoma*:ab,ti OR "soft tissue sarcoma*":ab,ti OR "soft-tissue sarcoma*":ab,ti OR liposarcoma*:ab,ti OR leiomyosarcoma*:ab,ti OR haemangioendotheliosarcoma*:ab,ti OR hemangioendotheliosarcoma*:ab,ti OR haemangioendothelioma*:ab,ti OR hemangioendothelioma*:ab,ti OR haemangiosarcoma*:ab,ti OR hemangiosarcoma*:ab,ti OR angiosarcoma*:ab,ti OR angioendothelioma*:ab,ti OR "kaposi sarcoma*":ab,ti OR "kaposis sarcoma*":ab,ti OR "kaposi`s sarcoma*":ab,ti OR "kaposiform hemangioendothelioma*":ab,ti OR "kaposiform haemangioendothelioma*":ab,ti OR "gastrointestinal stromal tumor*":ab,ti OR "gastrointestinal stromal tumor*":ab,ti OR "GIST":ab,ti OR "GISTs":ab,ti OR "EGIST":ab,ti OR "EGISTs":ab,ti OR "DGIDT":ab,ti OR "DGISTs":ab,ti OR "pleomorphic sarcoma*":ab,ti OR "spindle cell sarcoma*":ab,ti OR "round cell sarcoma*":ab,ti OR "epitheloid sarcoma*":ab,ti OR "undifferentiated sarcoma*":ab,ti OR "dedifferentiated sarcoma*":ab,ti OR "endometrial stromal sarcoma*":ab,ti OR rhabdomyosarcoma*:ab,ti OR myxofibrosarcoma*:ab,ti OR fibrosarcoma*:ab,ti OR "myofibroplastic sarcoma*":ab,ti OR "malignant fibrous histiocyoma*":ab,ti OR fibroblastoma*:ab,ti OR "fibrous tumor*":ab,ti OR "fibrous tumor*":ab,ti OR "malignant glomus tumor*":ab,ti OR "malignant glomus tumor*":ab,ti OR myofibromatosis:ab,ti OR "malignant peripheral nerve sheath tumor*":ab,ti OR "malignant peripheral nerv sheath tumor*":ab,ti OR "intima sarcoma*":ab,ti OR "intimal sarcoma*":ab,ti OR "epitheloid sarcoma*":ab,ti OR "desmoplastic small round cell tumor*":ab,ti OR "desmoplastic small round cell tumor*":ab,ti OR "clear cell tumor*":ab,ti OR "clear cell tumor*":ab,ti OR "clear cell sarcoma*":ab,ti OR "alveolar soft tissue sarcoma*":ab,ti OR "alveolar soft part sarcoma*":ab,ti OR "malignant mesenchymoma*":ab,ti OR "synovial sarcoma*":ab,ti OR "ewing sarcoma*":ab,ti OR "ewings sarcoma*":ab,ti OR "ewing`s sarcoma*":ab,ti OR chondrosarcoma*:ab,ti OR osteosarcoma*:ab,ti OR "extra-renal rhabdoid tumor*":ab,ti OR "extra-renal rhabdoid tumor*":ab,ti</p> <p>AND 'metastasis'/exp OR 'oligometastasis'/exp OR metasta*:ab,ti OR oligometasta*:ab,ti</p> <p>AND 'cancer surgery'/exp OR 'excision'/exp OR 'radiotherapy'/exp OR 'stereo-</p> | <p>140</p> |

tactic body radiation therapy'/exp OR 'radioembolization'/exp OR 'chemoembolization'/exp OR 'ablation therapy'/exp OR 'thermotherapy'/exp OR 'cryotherapy'/exp OR resection*:ab,ti OR excision*:ab,ti OR radiotherap*:ab,ti OR radiation:ab,ti OR 'stereotactic body radiotherapy':ab,ti OR 'sbrt':ab,ti OR radioembolisation:ab,ti OR radioembolization:ab,ti OR chemoembolisation:ab,ti OR chemoembolization*:ab,ti OR 'transarterial chemoembolization':ab,ti OR 'tace':ab,ti OR ablation*:ab,ti OR thermotherap*:ab,ti OR cryotherap*:ab,ti OR 'alcohol instillation':ab,ti OR 'ethanol instillation':ab,ti

AND 'systematic review'/exp OR 'systematic review' OR 'meta analysis':it OR intervention:ti OR random*:ab,ti OR placebo*:de,ab,ti OR (double NEXT/1 blind*):ab,ti

AND (English:la OR german:la)

AND [embase]/lim

NOT ("Comment":it OR "Letter":it OR "Editorial":it)

AND embase NOT (embase AND medline)

1.5.5. Recherchestrategie Chirurgie-Hyperthermie

Datum der Recherche: 15.12.2017 (Medline), 19.12.2017 (Embase)

Tabelle 16: Suchstrategie Chirurgie-Hyperthermie

| Suchstrategie Medline (via PubMed) | Treffer |
|---|---------|
| ("Hemangioendothelioma, Epithelioid"[Mesh] OR "Kaposiform Hemangioendothelioma"[Supplementary Concept] OR "Gastrointestinal Stromal Tumors"[Mesh] OR "Endometrial Stromal Tumors"[Mesh] OR "Sarcoma, Endometrial Stromal"[Mesh] OR "Malignant mesenchymal tumor"[Supplementary Concept] OR "Chondrosarcoma"[Mesh] OR "Chondrosarcoma, Mesenchymal"[Mesh] OR "Desmoplastic Small Round Cell Tumor"[Mesh] OR "Fibrosarcoma"[Mesh] OR "Dermatofibrosarcoma"[Mesh] OR "Hemangiosarcoma"[Mesh] OR "Histiocytoma, Malignant Fibrous"[Mesh] OR "Leiomyosarcoma"[Mesh] OR "Liposarcoma"[Mesh] OR "Liposarcoma, Myxoid"[Mesh] OR "Myosarcoma"[Mesh] OR "Rhabdomyosarcoma"[Mesh] OR "Rhabdomyosarcoma, Alveolar"[Mesh] OR "Myxosarcoma"[Mesh] OR "Osteosarcoma"[Mesh] OR "Sarcoma, Ewing"[Mesh] OR "Sarcoma, Alveolar Soft Part"[Mesh] OR "Sarcoma, Clear Cell"[Mesh] OR "Sarcoma, Kaposi"[Mesh] OR "Sarcoma, Myeloid"[Mesh] OR "Sarcoma, Small Cell"[Mesh] OR "Sarcoma, Synovial"[Mesh] OR sarcoma* [tiab] OR soft tissue sarcoma* [tiab] OR soft-tissue sarcoma* [tiab] OR liposarcoma* [tiab] OR leiomyosarcoma* [tiab] OR haemangioendotheliosarcoma* [tiab] OR hemangioendotheliosarcoma* [tiab] OR haemangioendothelioma* [tiab] OR hemangioendothelioma* [tiab] OR haemangiosarcoma* [tiab] OR hemangiosarcoma* [tiab] OR angiosarcoma* [tiab] OR angioendothelioma* [tiab] OR kaposi sarcoma* [tiab] OR kaposis sarcoma* [tiab] OR kaposi`s sarcoma* [tiab] OR kaposiform hemangioendothelioma* [tiab] OR kaposiform haemangioendothelioma* [tiab] OR gastrointestinal stromal tumor* [tiab] OR gastrointestinal stromal tumor* [tiab] OR "GIST"[tiab] OR "GISTs"[tiab] OR "EGIST"[tiab] OR "EGISTs"[tiab] OR "DGIST"[tiab] OR "DGISTs"[tiab] OR pleomorphic sarcoma* [tiab] OR spindle cell sarcoma* [tiab] OR round cell sarcoma* [tiab] OR epithelioid sarcoma* [tiab] OR undifferentiated sarcoma* [tiab] OR dedifferentiated sarcoma* [tiab] OR endometrial stromal sarcoma* [tiab] OR rhabdomyosarcoma* [tiab] OR myxofibrosarcoma* [tiab] OR fibrosarcoma* [tiab] OR myofibroblastic sarcoma* [tiab] OR malignant fibrous histiocytoma* [tiab] OR fibroblastoma* [tiab] OR fibrous tumor* [tiab] OR fibrous tumor* [tiab] OR malignant glomus tumor* [tiab] OR malignant glomus tumor* [tiab] OR myofibromatosis [tiab] OR malignant peripheral nerve sheath tumor* [tiab] OR malignant peripheral nerve sheath tumor* [tiab] OR intima sarcoma* [tiab] OR intimal sarcoma* [tiab] OR epithelioid sarcoma* [tiab] OR desmoplastic small round cell tumor* [tiab] OR desmoplastic small round cell tumor* [tiab] OR clear cell tumor* [tiab] OR clear cell tumor* [tiab] OR clear cell sarcoma* [tiab] OR alveolar soft tissue sarcoma* [tiab] OR alveolar soft part sarcoma* [tiab] OR malignant mesenchymoma* [tiab] OR synovial sarcoma* [tiab] OR ewing sarcoma* [tiab] OR ewings sarcoma* [tiab] OR ewing`s sarcoma* [tiab] OR chondrosarcoma* [tiab] OR osteosarcoma* [tiab] OR extra-renal rhabdoid tumor* [tiab] OR extra-renal rhabdoid tumor* [tiab]) | 101 |

| | |
|--|-----------------------|
| <p>AND "Hyperthermia, Induced"[Mesh] OR hypertherm*[tiab] OR perfusion[tiab]</p> <p>AND (randomized controlled trial[pt] OR controlled clinical trial[pt] OR randomized[tiab] OR randomized[tiab] OR placebo[tiab] OR clinical trials as topic[mesh:noexp] OR randomly[tiab] OR trial[ti] NOT (animals[mh] NOT humans [mh]))</p> <p>AND (english [la] OR german [la])</p> <p>NOT ("Comment" [Publication Type] OR "Letter" [Publication Type] OR "Editorial" [Publication Type])</p> | |
| <p>Suchstrategie Embase (via Embase)</p> | <p>Treffer</p> |
| <p>'soft tissue sarcoma'/exp OR 'hemangioendothelioma'/exp OR 'kaposiform hemangioendothelioma'/exp OR 'gastrointestinal stromal tumor'/exp OR 'endometrium sarcoma'/exp OR 'endometrial stromal tumor'/exp OR 'malignant mesenchymoma'/exp OR 'chondrosarcoma'/exp OR 'desmoplastic small round cell tumor'/exp OR 'fibrosarcoma'/exp OR 'dermatofibrosarcoma protuberans'/exp OR 'angiosarcoma'/exp OR 'leiomyosarcoma'/exp OR 'myosarcoma'/exp OR 'rhabdomyosarcoma'/exp OR 'osteosarcoma'/exp OR 'ewing sarcoma'/exp OR 'clear cell sarcoma'/exp OR 'kaposi sarcoma'/exp OR 'granulocytic sarcoma'/exp OR 'small cell sarcoma'/exp OR sarcoma*:ab,ti OR "soft tissue sarcoma*":ab,ti OR "soft-tissue sarcoma*":ab,ti OR liposarcoma*:ab,ti OR leiomyosarcoma*:ab,ti OR haemangioendotheliosarcoma*:ab,ti OR hemangioendotheliosarcoma*:ab,ti OR haemangioendothelioma*:ab,ti OR hemangioendothelioma*:ab,ti OR haemangiosarcoma*:ab,ti OR hemangiosarcoma*:ab,ti OR angiosarcoma*:ab,ti OR angioendothelioma*:ab,ti OR "kaposi sarcoma*":ab,ti OR "kaposi sarcoma*":ab,ti OR "kaposi's sarcoma*":ab,ti OR "kaposiform hemangioendothelioma*":ab,ti OR "kaposiform hemangioendothelioma*":ab,ti OR "gastrointestinal stromal tumor*":ab,ti OR "gastrointestinal stromal tumor*":ab,ti OR "GIST":ab,ti OR "GISTs":ab,ti OR "EGIST":ab,ti OR "EGISTs":ab,ti OR "DGIDT":ab,ti OR "DGISTs":ab,ti OR "pleomorphic sarcoma*":ab,ti OR "spindle cell sarcoma*":ab,ti OR "round cell sarcoma*":ab,ti OR "epitheloid sarcoma*":ab,ti OR "undifferentiated sarcoma*":ab,ti OR "dedifferentiated sarcoma*":ab,ti OR "endometrial stromal sarcoma*":ab,ti OR rhabdomyosarcoma*:ab,ti OR myxofibrosarcoma*:ab,ti OR fibrosarcoma*:ab,ti OR "myofibroplastic sarcoma*":ab,ti OR "malignant fibrous histiocytoma*":ab,ti OR fibroblastoma*:ab,ti OR "fibrous tumor*":ab,ti OR "fibrous tumor*":ab,ti OR "malignant glomus tumor*":ab,ti OR "malignant glomus tumor*":ab,ti OR myofibromatosis:ab,ti OR "malignant peripheral nerve sheath tumor*":ab,ti OR "malignant peripheral nerv sheath tumor*":ab,ti OR "intima sarcoma*":ab,ti OR "intimal sarcoma*":ab,ti OR "epitheloid sarcoma*":ab,ti OR "desmoplastic small round cell tumor*":ab,ti OR "desmoplastic small round cell tumor*":ab,ti OR "clear cell tumor*":ab,ti OR "clear cell tumor*":ab,ti OR "clear cell sarcoma*":ab,ti OR "alveolar soft tissue sarcoma*":ab,ti OR "alveolar soft part sarcoma*":ab,ti OR "malignant mesenchymoma*":ab,ti OR "synovial sarcoma*":ab,ti OR "ewing sarcoma*":ab,ti OR "ewings sarcoma*":ab,ti OR "ewing`s sarcoma*":ab,ti OR chondrosarcoma*:ab,ti OR osteosarcoma*:ab,ti OR "extra-renal rhabdoid tumor*":ab,ti OR "extra-renal rhabdoid tumor*":ab,ti</p> | <p>13</p> |

| | |
|---|--|
| <p>AND 'thermotherapy'/exp OR hypertherm*:ab,ti OR perfusion:ab,ti</p> <p>AND random*:ab,ti OR placebo*:de,ab,ti OR (double NEXT/1 blind*):ab,ti</p> <p>AND (English:la OR german:la)</p> <p>AND [embase]/lim</p> <p>NOT ("Comment":it OR "Letter":it OR "Editorial":it)</p> <p>AND embase NOT (embase AND medline)</p> | |
|---|--|

1.5.6. Recherchestrategie Chirurgie-OP

Datum der Recherche: 10.05.2019

Tabelle 17: Suchstrategie Chirurgie-OP

| Suchstrategie Medline (via PubMed) | Treffer |
|--|---------|
| <p>("Hemangioendothelioma, Epithelioid"[Mesh] OR "Kaposiform Hemangioendothelioma"[Supplementary Concept] OR "Gastrointestinal Stromal Tumors"[Mesh] OR "Endometrial Stromal Tumors"[Mesh] OR "Sarcoma, Endometrial Stromal"[Mesh] OR "Malignant mesenchymal tumor"[Supplementary Concept] OR "Chondrosarcoma"[Mesh] OR "Chondrosarcoma, Mesenchymal"[Mesh] OR "Desmoplastic Small Round Cell Tumor"[Mesh] OR "Fibrosarcoma"[Mesh] OR "Dermatofibrosarcoma"[Mesh] OR "Hemangiosarcoma"[Mesh] OR "Histiocytoma, Malignant Fibrous"[Mesh] OR "Leiomyosarcoma"[Mesh] OR "Liposarcoma"[Mesh] OR "Liposarcoma, Myxoid"[Mesh] OR "Myosarcoma"[Mesh] OR "Rhabdomyosarcoma"[Mesh] OR "Rhabdomyosarcoma, Alveolar"[Mesh] OR "Myxosarcoma"[Mesh] OR "Osteosarcoma"[Mesh] OR "Sarcoma, Ewing"[Mesh] OR "Sarcoma, Alveolar Soft Part"[Mesh] OR "Sarcoma, Clear Cell"[Mesh] OR "Sarcoma, Kaposi"[Mesh] OR "Sarcoma, Myeloid"[Mesh] OR "Sarcoma, Small Cell"[Mesh] OR "Sarcoma, Synovial"[Mesh] OR sarcoma* [tiab] OR soft tissue sarcoma* [tiab] OR soft-tissue sarcoma* [tiab] OR liposarcoma* [tiab] OR leiomyosarcoma* [tiab] OR haemangioendotheliosarcoma* [tiab] OR hemangioendotheliosarcoma* [tiab] OR haemangioendothelioma* [tiab] OR hemangioendothelioma* [tiab] OR haemangiosarcoma* [tiab] OR hemangiosarcoma* [tiab] OR angiosarcoma* [tiab] OR angioendothelioma* [tiab] OR kaposi sarcoma* [tiab] OR kaposis sarcoma* [tiab] OR kaposi`s sarcoma* [tiab] OR kaposiform hemangioendothelioma* [tiab] OR kaposiform haemangioendothelioma* [tiab] OR gastrointestinal stromal tumor* [tiab] OR gastrointestinal stromal tumor* [tiab] OR "GIST"[tiab] OR "GISTs"[tiab] OR "EGIST"[tiab] OR "EGISTs"[tiab] OR "DGIST"[tiab] OR "DGISTs"[tiab] OR pleomorphic sarcoma* [tiab] OR spindle cell sarcoma* [tiab] OR round cell sarcoma* [tiab] OR epithelioid sarcoma* [tiab] OR undifferentiated sarcoma* [tiab] OR dedifferentiated sarcoma* [tiab] OR endometrial stromal sarcoma* [tiab] OR rhabdomyosarcoma* [tiab] OR myxofibrosarcoma* [tiab] OR fibrosarcoma* [tiab] OR myofibroblastic sarcoma* [tiab] OR malignant fibrous histiocytoma* [tiab] OR fibroblastoma* [tiab] OR fibrous tumor* [tiab] OR fibrous tumor* [tiab] OR malignant glomus tumor* [tiab] OR malignant</p> | 1.594 |

| | |
|--|-----------------------|
| <p>glomus tumor* [tiab] OR myofibromatosis [tiab] OR malignant peripheral nerve sheath tumor* [tiab] OR malignant peripheral nerve sheath tumor* [tiab] OR intima sarcoma* [tiab] OR intimal sarcoma* [tiab] OR epithelioid sarcoma* [tiab] OR desmoplastic small round cell tumor* [tiab] OR desmoplastic small round cell tumor* [tiab] OR clear cell tumor* [tiab] OR clear cell tumor* [tiab] OR clear cell sarcoma* [tiab] OR alveolar soft tissue sarcoma* [tiab] OR alveolar soft part sarcoma* [tiab] OR malignant mesenchymoma* [tiab] OR synovial sarcoma* [tiab] OR ewing sarcoma* [tiab] OR ewings sarcoma* [tiab] OR ewing`s sarcoma* [tiab] OR chondrosarcoma* [tiab] OR osteosarcoma* [tiab] OR extra-renal rhabdoid tumor* [tiab] OR extra-renal rhabdoid tumor* [tiab])</p> <p>AND ("Amputation"[Mesh] OR resection [tiab] OR resections [tiab] OR excision [tiab] OR excisions [tiab] OR amputation*[tiab] OR extirpation*[tiab] OR ectomy[tiab] OR ectomies[tiab])</p> <p>AND ("Lower Extremity"[Mesh] OR "lower extremity"[tiab] OR "lower extremities"[tiab] OR "lower limb"[tiab] OR "lower limbs"[tiab])</p> <p>AND (english [la] OR german [la])</p> <p>NOT ("Comment" [Publication Type] OR "Letter" [Publication Type] OR "Editorial" [Publication Type])</p> | |
| <p>Suchstrategie Embase (via Embase)</p> | <p>Treffer</p> |
| <p>'soft tissue sarcoma'/exp OR 'hemangioendothelioma'/exp OR 'kaposiform hemangioendothelioma'/exp OR 'gastrointestinal stromal tumor'/exp OR 'endometrium sarcoma'/exp OR 'endometrial stromal tumor'/exp OR 'malignant mesenchymoma'/exp OR 'chondrosarcoma'/exp OR 'desmoplastic small round cell tumor'/exp OR 'fibrosarcoma'/exp OR 'dermatofibrosarcoma protuberans'/exp OR 'angiosarcoma'/exp OR 'leiomyosarcoma'/exp OR 'myosarcoma'/exp OR 'rhabdomyosarcoma'/exp OR 'osteosarcoma'/exp OR 'ewing sarcoma'/exp OR 'clear cell sarcoma'/exp OR 'kaposi sarcoma'/exp OR 'granulocytic sarcoma'/exp OR 'small cell sarcoma'/exp OR sarcoma*:ab,ti OR "soft tissue sarcoma*":ab,ti OR "soft-tissue sarcoma*":ab,ti OR liposarcoma*:ab,ti OR leiomyosarcoma*:ab,ti OR haemangioendotheliosarcoma*:ab,ti OR hemangioendotheliosarcoma*:ab,ti OR haemangioendothelioma*:ab,ti OR hemangioendothelioma*:ab,ti OR haemangiosarcoma*:ab,ti OR angiosarcoma*:ab,ti OR angioendothelioma*:ab,ti OR "kaposi sarcoma*":ab,ti OR "kaposis sarcoma*":ab,ti OR "kaposi`s sarcoma*":ab,ti OR "kaposiform hemangioendothelioma*":ab,ti OR "kaposiform haemangioendothelioma*":ab,ti OR "gastrointestinal stromal tumor*":ab,ti OR "GIST":ab,ti OR "GISTs":ab,ti OR "EGIST":ab,ti OR "EGISTs":ab,ti OR "DGIDT":ab,ti OR "DGISTs":ab,ti OR "pleomorphic sarcoma*":ab,ti OR "spindle cell sarcoma*":ab,ti OR "round cell sarcoma*":ab,ti OR "epithelioid sarcoma*":ab,ti OR "undifferentiated sarcoma*":ab,ti OR "dedifferentiated sarcoma*":ab,ti OR "endometrial stromal sarcoma*":ab,ti OR rhabdomyosarcoma*:ab,ti OR myxofibrosarcoma*:ab,ti OR fibrosarcoma*:ab,ti OR "myofibroplastic sarcoma*":ab,ti OR "malignant fibrous histiocytoma*":ab,ti OR fibroblastoma*:ab,ti OR "fibrous tumor*":ab,ti OR "fibrous tumor*":ab,ti OR "malignant glomus tumor*":ab,ti OR "malignant glomus tumor*":ab,ti OR myofi-</p> | <p>393</p> |

| | |
|--|--|
| <p>bromatosis:ab,ti OR "malignant peripheral nerve sheath tumor*":ab,ti OR "malignant peripheral nerv sheath tumor*":ab,ti OR "intima sarcoma*":ab,ti OR "intimal sarcoma*":ab,ti OR "epitheloid sarcoma*":ab,ti OR "desmoplastic small round cell tumor*":ab,ti OR "desmoplastic small round cell tumor*":ab,ti OR "clear cell tumor*":ab,ti OR "clear cell tumor*":ab,ti OR "clear cell sarcoma*":ab,ti OR "alveolar soft tissue sarcoma*":ab,ti OR "alveolar soft part sarcoma*":ab,ti OR "malignant mesenchymoma*":ab,ti OR "synovial sarcoma*":ab,ti OR "ewing sarcoma*":ab,ti OR "ewings sarcoma*":ab,ti OR "ewing`s sarcoma*":ab,ti OR chondrosarcoma*:ab,ti OR osteosarcoma*:ab,ti OR "extra-renal rhabdoid tumor*":ab,ti OR "extra-renal rhabdoid tumor*":ab,ti</p> <p>AND ('amputation'/exp OR 'cancer surgery'/exp OR 'excision'/exp OR resection*:ab,ti OR excision*:ab,ti OR amputation*:ab,ti OR extirpation*:ab,ti OR ectom*:ab,ti)</p> <p>AND ('lower limb'/exp OR ("lower extremity" OR "lower extremities" OR "lower limb" OR "lower limbs"):ti,ab)</p> <p>AND (English:la OR german:la)</p> <p>AND ([embase]/lim)</p> <p>NOT ("Comment":it OR "Letter":it OR "Editorial":it)</p> <p>AND ([1-1-1111]/sd NOT [11-5-2019]/sd)</p> <p>AND (embase NOT (embase AND medline))</p> | |
|--|--|

1.5.7. Recherchestrategie Chirurgie-Resektionsränder

Datum der Recherche: 04.01.2018

Tabelle 18: Suchstrategie Chirurgie-Resektionsränder

| Suchstrategie Medline (via PubMed) | Treffer |
|---|----------------|
| <p>("Hemangioendothelioma, Epithelioid"[Mesh] OR "Kaposiform Hemangioendothelioma"[Supplementary Concept] OR "Gastrointestinal Stromal Tumors"[Mesh] OR "Endometrial Stromal Tumors"[Mesh] OR "Sarcoma, Endometrial Stromal"[Mesh] OR "Malignant mesenchymal tumor"[Supplementary Concept] OR "Chondrosarcoma"[Mesh] OR "Chondrosarcoma, Mesenchymal"[Mesh] OR "Desmoplastic Small Round Cell Tumor"[Mesh] OR "Fibrosarcoma"[Mesh] OR "Dermatofibrosarcoma"[Mesh] OR "Hemangiosarcoma"[Mesh] OR "Histiocytoma, Malignant Fibrous"[Mesh] OR "Leiomyosarcoma"[Mesh] OR "Liposarcoma"[Mesh] OR "Liposarcoma, Myxoid"[Mesh] OR "Myosarcoma"[Mesh] OR "Rhabdomyosarcoma"[Mesh] OR "Rhabdomyosarcoma, Alveolar"[Mesh] OR "Myxosarcoma"[Mesh] OR "Osteosarcoma"[Mesh] OR "Sarcoma, Ewing"[Mesh] OR "Sarcoma, Alveolar Soft Part"[Mesh] OR "Sarcoma, Clear Cell"[Mesh] OR "Sarcoma, Kaposi"[Mesh] OR "Sarcoma, Myeloid"[Mesh] OR "Sarcoma, Small Cell"[Mesh] OR "Sarcoma, Synovial"[Mesh] OR sarcoma* [tiab] OR soft tissue sarcoma* [tiab] OR soft-tissue sarcoma* [tiab] OR liposarcoma* [tiab] OR leiomyosarcoma* [tiab] OR hae-</p> | 1.672 |

| | |
|---|-----------------------|
| <p>mangioendotheliosarcoma* [tiab] OR hemangioendotheliosarcoma* [tiab] OR haemangioendothelioma* [tiab] OR hemangioendothelioma* [tiab] OR haemangiosarcoma* [tiab] OR hemangiosarcoma* [tiab] OR angiosarcoma* [tiab] OR angioendothelioma* [tiab] OR kaposi sarcoma* [tiab] OR kaposi sarcoma* [tiab] OR kaposi's sarcoma* [tiab] OR kaposiform hemangioendothelioma* [tiab] OR kaposiform haemangioendothelioma* [tiab] OR gastrointestinal stromal tumor* [tiab] OR gastrointestinal stromal tumor* [tiab] OR "GIST"[tiab] OR "GISTs"[tiab] OR "EGIST"[tiab] OR "EGISTs"[tiab] OR "DGIST"[tiab] OR "DGISTs"[tiab] OR pleomorphic sarcoma* [tiab] OR spindle cell sarcoma* [tiab] OR round cell sarcoma* [tiab] OR epithelioid sarcoma* [tiab] OR undifferentiated sarcoma* [tiab] OR dedifferentiated sarcoma* [tiab] OR endometrial stromal sarcoma* [tiab] OR rhabdomyosarcoma* [tiab] OR myxofibrosarcoma* [tiab] OR fibrosarcoma* [tiab] OR myofibroblastic sarcoma* [tiab] OR malignant fibrous histiocytoma* [tiab] OR fibroblastoma* [tiab] OR fibrous tumor* [tiab] OR fibrous tumor* [tiab] OR malignant glomus tumor* [tiab] OR malignant glomus tumor* [tiab] OR myofibromatosis [tiab] OR malignant peripheral nerve sheath tumor* [tiab] OR malignant peripheral nerve sheath tumor* [tiab] OR intima sarcoma* [tiab] OR intimal sarcoma* [tiab] OR epithelioid sarcoma* [tiab] OR desmoplastic small round cell tumor* [tiab] OR desmoplastic small round cell tumor* [tiab] OR clear cell tumor* [tiab] OR clear cell tumor* [tiab] OR clear cell sarcoma* [tiab] OR alveolar soft tissue sarcoma* [tiab] OR alveolar soft part sarcoma* [tiab] OR malignant mesenchymoma* [tiab] OR synovial sarcoma* [tiab] OR ewing sarcoma* [tiab] OR ewings sarcoma* [tiab] OR ewing's sarcoma* [tiab] OR chondrosarcoma* [tiab] OR osteosarcoma* [tiab] OR extra-renal rhabdoid tumor* [tiab] OR extra-renal rhabdoid tumor* [tiab])</p> <p>AND "Margins of Excision"[Mesh] OR</p> <p>excision margin[tiab] OR excision margins[tiab] OR margin of excision[tiab] OR margins of excision[tiab] OR resection margin[tiab] OR resection margins[tiab] OR margin of resection[tiab] OR margins of resection[tiab] OR surgical margin[tiab] OR surgical margins[tiab] OR tumor free margin[tiab] OR tumor free margin[tiab] OR tumor free margins[tiab] OR tumor free margins[tiab]</p> <p>AND (english [la] OR german [la])</p> <p>NOT ("Comment" [Publication Type] OR "Letter" [Publication Type] OR "Editorial" [Publication Type])</p> | |
| <p>Suchstrategie Embase (via Embase)</p> | <p>Treffer</p> |
| <p>'soft tissue sarcoma'/exp OR 'hemangioendothelioma'/exp OR 'kaposiform hemangioendothelioma'/exp OR 'gastrointestinal stromal tumor'/exp OR 'endometrium sarcoma'/exp OR 'endometrial stromal tumor'/exp OR 'malignant mesenchymoma'/exp OR 'chondrosarcoma'/exp OR 'desmoplastic small round cell tumor'/exp OR 'fibrosarcoma'/exp OR 'dermatofibrosarcoma protuberans'/exp OR 'angiosarcoma'/exp OR 'leiomyosarcoma'/exp OR 'myosarcoma'/exp OR 'rhabdomyosarcoma'/exp OR 'osteosarcoma'/exp OR 'ewing sarcoma'/exp OR 'clear cell sarcoma'/exp OR 'kaposi sarcoma'/exp OR 'granulocytic sarcoma'/exp OR 'small cell sarcoma'/exp OR sarcoma*:ab,ti OR "soft tissue sarcoma*":ab,ti OR "soft-tissue sarcoma*":ab,ti OR liposarcoma*:ab,ti</p> | <p>339</p> |

OR leiomyosarcoma*:ab,ti OR haemangioendotheliosarcoma*:ab,ti OR hemangioendotheliosarcoma*:ab,ti OR haemangioendothelioma*:ab,ti OR hemangioendothelioma*:ab,ti OR haemangiosarcoma*:ab,ti OR hemangiosarcoma*:ab,ti OR angiosarcoma*:ab,ti OR angioendothelioma*:ab,ti OR "kaposi sarcoma*":ab,ti OR "kaposi sarcoma*":ab,ti OR "kaposi`s sarcoma*":ab,ti OR "kaposiform hemangioendothelioma*":ab,ti OR "kaposiform haemangioendothelioma*":ab,ti OR "gastrointestinal stromal tumor*":ab,ti OR "gastrointestinal stromal tumor*":ab,ti OR "GIST":ab,ti OR "GISTs":ab,ti OR "EGIST":ab,ti OR "EGISTs":ab,ti OR "DGIDT":ab,ti OR "DGISTs":ab,ti OR "pleomorphic sarcoma*":ab,ti OR "spindle cell sarcoma*":ab,ti OR "round cell sarcoma*":ab,ti OR "epitheloid sarcoma*":ab,ti OR "undifferentiated sarcoma*":ab,ti OR "dedifferentiated sarcoma*":ab,ti OR "endometrial stromal sarcoma*":ab,ti OR rhabdomyosarcoma*:ab,ti OR myxofibrosarcoma*:ab,ti OR fibrosarcoma*:ab,ti OR "myofibroplastic sarcoma*":ab,ti OR "malignant fibrous histiocytoma*":ab,ti OR fibroblastoma*:ab,ti OR "fibrous tumor*":ab,ti OR "fibrous tumor*":ab,ti OR "malignant glomus tumor*":ab,ti OR "malignant glomus tumor*":ab,ti OR myofibromatosis:ab,ti OR "malignant peripheral nerve sheath tumor*":ab,ti OR "malignant peripheral nerv sheath tumor*":ab,ti OR "intima sarcoma*":ab,ti OR "intimal sarcoma*":ab,ti OR "epitheloid sarcoma*":ab,ti OR "desmoplastic small round cell tumor*":ab,ti OR "desmoplastic small round cell tumor*":ab,ti OR "clear cell tumor*":ab,ti OR "clear cell tumor*":ab,ti OR "clear cell sarcoma*":ab,ti OR "alveolar soft tissue sarcoma*":ab,ti OR "alveolar soft part sarcoma*":ab,ti OR "malignant mesenchymoma*":ab,ti OR "synovial sarcoma*":ab,ti OR "ewing sarcoma*":ab,ti OR "ewings sarcoma*":ab,ti OR "ewing`s sarcoma*":ab,ti OR chondrosarcoma*:ab,ti OR osteosarcoma*:ab,ti OR "extra-renal rhabdoid tumor*":ab,ti OR "extra-renal rhabdoid tumor*":ab,ti

AND 'surgical margin'/exp OR 'excision margin':ab,ti OR 'excision margins':ab,ti OR 'margin of excision':ab,ti OR 'margins of excision':ab,ti OR 'resection margin':ab,ti OR 'resection margins':ab,ti OR 'margin of resection':ab,ti OR 'margins of resection':ab,ti OR 'surgical margin':ab,ti OR 'surgical margins':ab,ti OR 'tumor free margin':ab,ti OR 'tumor free margin':ab,ti OR 'tumor free margins':ab,ti OR 'tumor free margins':ab,ti

AND (English:la OR german:la)

AND [embase]/lim

NOT ("Comment":it OR "Letter":it OR "Editorial":it)

AND embase NOT (embase AND medline)

1.5.8. Recherchestrategie Chirurgie-Strahlentherapie

Datum der Recherche: 15.12.2017 (Medline), 19.12.2017 (Embase)

Tabelle 19: Suchstrategie Chirurgie-Strahlentherapie

| Suchstrategie Medline (via PubMed) | Treffer |
|--|------------|
| <p>("Hemangioendothelioma, Epithelioid"[Mesh] OR "Kaposiform Hemangioendothelioma"[Supplementary Concept] OR "Gastrointestinal Stromal Tumors"[Mesh] OR "Endometrial Stromal Tumors"[Mesh] OR "Sarcoma, Endometrial Stromal"[Mesh] OR "Malignant mesenchymal tumor"[Supplementary Concept] OR "Chondrosarcoma"[Mesh] OR "Chondrosarcoma, Mesenchymal"[Mesh] OR "Desmoplastic Small Round Cell Tumor"[Mesh] OR "Fibrosarcoma"[Mesh] OR "Dermatofibrosarcoma"[Mesh] OR "Hemangiosarcoma"[Mesh] OR "Histiocytoma, Malignant Fibrous"[Mesh] OR "Leiomyosarcoma"[Mesh] OR "Liposarcoma"[Mesh] OR "Liposarcoma, Myxoid"[Mesh] OR "Myosarcoma"[Mesh] OR "Rhabdomyosarcoma"[Mesh] OR "Rhabdomyosarcoma, Alveolar"[Mesh] OR "Myxosarcoma"[Mesh] OR "Osteosarcoma"[Mesh] OR "Sarcoma, Ewing"[Mesh] OR "Sarcoma, Alveolar Soft Part"[Mesh] OR "Sarcoma, Clear Cell"[Mesh] OR "Sarcoma, Kaposi"[Mesh] OR "Sarcoma, Myeloid"[Mesh] OR "Sarcoma, Small Cell"[Mesh] OR "Sarcoma, Synovial"[Mesh] OR sarcoma* [tiab] OR soft tissue sarcoma* [tiab] OR soft-tissue sarcoma* [tiab] OR liposarcoma* [tiab] OR leiomyosarcoma* [tiab] OR hemangioendotheliosarcoma* [tiab] OR hemangioendotheliosarcoma* [tiab] OR haemangioendothelioma* [tiab] OR hemangioendothelioma* [tiab] OR hemangiosarcoma* [tiab] OR hemangiosarcoma* [tiab] OR angiosarcoma* [tiab] OR angioendothelioma* [tiab] OR kaposi sarcoma* [tiab] OR kaposi sarcoma* [tiab] OR kaposi`s sarcoma* [tiab] OR kaposiform hemangioendothelioma* [tiab] OR kaposiform haemangioendothelioma* [tiab] OR gastrointestinal stromal tumor* [tiab] OR gastrointestinal stromal tumor* [tiab] OR "GIST"[tiab] OR "GISTs"[tiab] OR "EGIST"[tiab] OR "EGISTs"[tiab] OR "DGIST"[tiab] OR "DGISTs"[tiab] OR pleomorphic sarcoma* [tiab] OR spindle cell sarcoma* [tiab] OR round cell sarcoma* [tiab] OR epithelioid sarcoma* [tiab] OR undifferentiated sarcoma* [tiab] OR dedifferentiated sarcoma* [tiab] OR endometrial stromal sarcoma* [tiab] OR rhabdomyosarcoma* [tiab] OR myxofibrosarcoma* [tiab] OR fibrosarcoma* [tiab] OR myofibroblastic sarcoma* [tiab] OR malignant fibrous histiocytoma* [tiab] OR fibroblastoma* [tiab] OR fibrous tumor* [tiab] OR fibrous tumor* [tiab] OR malignant glomus tumor* [tiab] OR malignant glomus tumor* [tiab] OR myofibromatosis [tiab] OR malignant peripheral nerve sheath tumor* [tiab] OR malignant peripheral nerve sheath tumor* [tiab] OR intima sarcoma* [tiab] OR intimal sarcoma* [tiab] OR epithelioid sarcoma* [tiab] OR desmoplastic small round cell tumor* [tiab] OR desmoplastic small round cell tumor* [tiab] OR clear cell tumor* [tiab] OR clear cell tumor* [tiab] OR clear cell sarcoma* [tiab] OR alveolar soft tissue sarcoma* [tiab] OR alveolar soft part sarcoma* [tiab] OR malignant mesenchymoma* [tiab] OR synovial sarcoma* [tiab] OR ewing sarcoma* [tiab] OR ewings sarcoma* [tiab] OR ewing`s sarcoma* [tiab] OR chondrosarcoma* [tiab] OR osteosarcoma* [tiab] OR extra-renal rhabdoid tumor* [tiab] OR extra-renal rhabdoid tumor* [tiab])</p> <p>AND "Radiotherapy"[Mesh] OR radiotherapy[tiab] OR radiotherapies[tiab] OR</p> | <p>841</p> |

| | |
|--|-----------------------|
| <p>radiation[tiab] OR brachytherapy[tiab]</p> <p>AND (medline OR "systematic review" OR meta-analysis[pt] OR intervention[ti] OR (randomized controlled trial[pt] OR controlled clinical trial[pt] OR randomized[tiab] OR randomized[tiab] OR placebo[tiab] OR clinical trials as topic[mesh:noexp] OR randomly[tiab] OR trial[ti] NOT (animals[mh] NOT humans [mh]))</p> <p>AND (english [la] OR german [la])</p> <p>NOT ("Comment" [Publication Type] OR "Letter" [Publication Type] OR "Editorial" [Publication Type])</p> | |
| <p>Suchstrategie Embase (via Embase)</p> | <p>Treffer</p> |
| <p>'soft tissue sarcoma'/exp OR 'hemangioendothelioma'/exp OR 'kaposiform hemangioendothelioma'/exp OR 'gastrointestinal stromal tumor'/exp OR 'endometrium sarcoma'/exp OR 'endometrial stromal tumor'/exp OR 'malignant mesenchymoma'/exp OR 'chondrosarcoma'/exp OR 'desmoplastic small round cell tumor'/exp OR 'fibrosarcoma'/exp OR 'dermatofibrosarcoma protuberans'/exp OR 'angiosarcoma'/exp OR 'leiomyosarcoma'/exp OR 'myosarcoma'/exp OR 'rhabdomyosarcoma'/exp OR 'osteosarcoma'/exp OR 'ewing sarcoma'/exp OR 'clear cell sarcoma'/exp OR 'kaposi sarcoma'/exp OR 'granulocytic sarcoma'/exp OR 'small cell sarcoma'/exp OR sarcoma*:ab,ti OR "soft tissue sarcoma*":ab,ti OR "soft-tissue sarcoma*":ab,ti OR liposarcoma*:ab,ti OR leiomyosarcoma*:ab,ti OR haemangioendotheliosarcoma*:ab,ti OR hemangioendotheliosarcoma*:ab,ti OR haemangioendothelioma*:ab,ti OR hemangioendothelioma*:ab,ti OR haemangiosarcoma*:ab,ti OR angiosarcoma*:ab,ti OR angioendothelioma*:ab,ti OR "kaposi sarcoma*":ab,ti OR "kaposis sarcoma*":ab,ti OR "kaposi`s sarcoma*":ab,ti OR "kaposiform hemangioendothelioma*":ab,ti OR "kaposiform haemangioendothelioma*":ab,ti OR "gastrointestinal stromal tumor*":ab,ti OR "gastrointestinal stromal tumor*":ab,ti OR "GIST":ab,ti OR "GISTs":ab,ti OR "EGIST":ab,ti OR "EGISTs":ab,ti OR "DGIDT":ab,ti OR "DGISTs":ab,ti OR "pleomorphic sarcoma*":ab,ti OR "spindle cell sarcoma*":ab,ti OR "round cell sarcoma*":ab,ti OR "epitheloid sarcoma*":ab,ti OR "undifferentiated sarcoma*":ab,ti OR "dedifferentiated sarcoma*":ab,ti OR "endometrial stromal sarcoma*":ab,ti OR rhabdomyosarcoma*:ab,ti OR myxofibrosarcoma*:ab,ti OR fibrosarcoma*:ab,ti OR "myofibroplastic sarcoma*":ab,ti OR "malignant fibrous histiocytoma*":ab,ti OR fibroblastoma*:ab,ti OR "fibrous tumor*":ab,ti OR "fibrous tumor*":ab,ti OR "malignant glomus tumor*":ab,ti OR "malignant glomus tumor*":ab,ti OR myofibromatosis:ab,ti OR "malignant peripheral nerve sheath tumor*":ab,ti OR "malignant peripheral nerv sheath tumor*":ab,ti OR "intima sarcoma*":ab,ti OR "intimal sarcoma*":ab,ti OR "epitheloid sarcoma*":ab,ti OR "desmoplastic small round cell tumor*":ab,ti OR "desmoplastic small round cell tumor*":ab,ti OR "clear cell tumor*":ab,ti OR "clear cell tumor*":ab,ti OR "clear cell sarcoma*":ab,ti OR "alveolar soft tissue sarcoma*":ab,ti OR "alveolar soft part sarcoma*":ab,ti OR "malignant mesenchymoma*":ab,ti OR "synovial sarcoma*":ab,ti OR "ewing sarcoma*":ab,ti OR "ewings sarcoma*":ab,ti OR "ewing`s sarcoma*":ab,ti OR chondrosarcoma*:ab,ti OR osteosarcoma*:ab,ti</p> | <p>158</p> |

| | |
|--|--|
| <p>OR "extra-renal rhabdoid tumor*":ab,ti OR "extra-renal rhabdoid tumor*":ab,ti</p> <p>AND 'radiotherapy'/exp OR radiotherap*:ab,ti OR radiation:ab,ti OR brachytherapy:ab,ti</p> <p>AND 'systematic review'/exp OR 'systematic review' OR 'meta analysis':it OR intervention:ti OR random*:ab,ti OR placebo*:de,ab,ti OR (double NEXT/1 blind*):ab,ti</p> <p>AND (English:la OR german:la)</p> <p>AND [embase]/lim</p> <p>NOT ("Comment":it OR "Letter":it OR "Editorial":it)</p> <p>AND embase NOT (embase AND medline)</p> | |
|--|--|

1.5.9. Recherchestrategie Rehabilitation

Datum der Recherche: 05.09.2017

Tabelle 20: Suchstrategie Rehabilitation

| Suchstrategie Medline (via PubMed) | Treffer |
|--|---------|
| <p>("Hemangioendothelioma, Epithelioid"[Mesh] OR "Kaposiform Hemangioendothelioma"[Supplementary Concept] OR "Gastrointestinal Stromal Tumors"[Mesh] OR "Endometrial Stromal Tumors"[Mesh] OR "Sarcoma, Endometrial Stromal"[Mesh] OR "Malignant mesenchymal tumor"[Supplementary Concept] OR "Chondrosarcoma"[Mesh] OR "Chondrosarcoma, Mesenchymal"[Mesh] OR "Desmoplastic Small Round Cell Tumor"[Mesh] OR "Fibrosarcoma"[Mesh] OR "Dermatofibrosarcoma"[Mesh] OR "Hemangiosarcoma"[Mesh] OR "Histiocytoma, Malignant Fibrous"[Mesh] OR "Leiomyosarcoma"[Mesh] OR "Liposarcoma"[Mesh] OR "Liposarcoma, Myxoid"[Mesh] OR "Myosarcoma"[Mesh] OR "Rhabdomyosarcoma"[Mesh] OR "Rhabdomyosarcoma, Alveolar"[Mesh] OR "Myxosarcoma"[Mesh] OR "Osteosarcoma"[Mesh] OR "Sarcoma, Ewing"[Mesh] OR "Sarcoma, Alveolar Soft Part"[Mesh] OR "Sarcoma, Clear Cell"[Mesh] OR "Sarcoma, Kaposi"[Mesh] OR "Sarcoma, Myeloid"[Mesh] OR "Sarcoma, Small Cell"[Mesh] OR "Sarcoma, Synovial"[Mesh] OR sarcoma* [tiab] OR soft tissue sarcoma* [tiab] OR soft-tissue sarcoma* [tiab] OR liposarcoma* [tiab] OR leiomyosarcoma* [tiab] OR haemangioendotheliosarcoma* [tiab] OR hemangioendotheliosarcoma* [tiab] OR haemangioendothelioma* [tiab] OR hemangioendothelioma* [tiab] OR haemangiosarcoma* [tiab] OR hemangiosarcoma* [tiab] OR angiosarcoma* [tiab] OR angioendothelioma* [tiab] OR kaposi sarcoma* [tiab] OR kaposis sarcoma* [tiab] OR kaposi`s sarcoma* [tiab] OR kaposiform hemangioendothelioma* [tiab] OR kaposiform haemangioendothelioma* [tiab] OR gastrointestinal stromal tumor* [tiab] OR gastrointestinal stromal tumor* [tiab] OR pleomorphic sarcoma* [tiab] OR spindle cell sarcoma* [tiab] OR round cell sarcoma* [tiab] OR epithelioid sarcoma* [tiab] OR undifferentiated sarcoma* [tiab] OR dedifferentiated sarcoma* [tiab] OR endometrial stromal sarcoma* [tiab] OR rhabdomyosarcoma* [tiab] OR myxofibrosarcoma* [tiab] OR fibrosarcoma* [tiab]</p> | 446 |

| | |
|--|-----------------------|
| <p>OR myofibroblastic sarcoma* [tiab] OR malignant fibrous histiocytoma* [tiab] OR fibroblastoma* [tiab] OR fibrous tumor* [tiab] OR fibrous tumor* [tiab] OR malignant glomus tumor* [tiab] OR malignant glomus tumor* [tiab] OR myofibromatosis [tiab] OR malignant peripheral nerve sheath tumor* [tiab] OR malignant peripheral nerve sheath tumor* [tiab] OR intima sarcoma* [tiab] OR intimal sarcoma* [tiab] OR epithelioid sarcoma* [tiab] OR desmoplastic small round cell tumor* [tiab] OR desmoplastic small round cell tumor* [tiab] OR clear cell tumor* [tiab] OR clear cell tumor* [tiab] OR clear cell sarcoma* [tiab] OR alveolar soft tissue sarcoma* [tiab] OR alveolar soft part sarcoma* [tiab] OR malignant mesenchymoma* [tiab] OR synovial sarcoma* [tiab] OR ewing sarcoma* [tiab] OR ewings sarcoma* [tiab] OR ewing`s sarcoma* [tiab] OR chondrosarcoma* [tiab] OR osteosarcoma* [tiab] OR extra-renal rhabdoid tumor* [tiab] OR extra-renal rhabdoid tumor* [tiab])</p> <p>AND "Rehabilitation"[Mesh] OR "Rehabilitation, Vocational"[Mesh] OR "Occupational Therapy"[Mesh] OR "Physical Therapy Modalities"[Mesh] OR "Aftercare"[Mesh] OR rehabilitation*[tiab] OR physiotherap*[tiab] OR physical therap*[tiab] OR sportstherap*[tiab] OR sports therap*[tiab] OR ergotherap*[tiab] OR psychoeducation[tiab] OR psycho-education[tiab] OR follow up care[tiab] OR aftercare[tiab]</p> <p>AND (english [la] OR german [la])</p> <p>NOT ("Comment" [Publication Type] OR "Letter" [Publication Type] OR "Editorial" [Publication Type])</p> | |
| <p>Suchstrategie Embase (via Embase)</p> | <p>Treffer</p> |
| <p>'soft tissue sarcoma'/exp OR 'hemangioendothelioma'/exp OR 'kaposiform hemangioendothelioma'/exp OR 'gastrointestinal stromal tumor'/exp OR 'endometrium sarcoma'/exp OR 'endometrial stromal tumor'/exp OR 'malignant mesenchymoma'/exp OR 'chondrosarcoma'/exp OR 'desmoplastic small round cell tumor'/exp OR 'fibrosarcoma'/exp OR 'dermatofibrosarcoma protuberans'/exp OR 'angiosarcoma'/exp OR 'leiomyosarcoma'/exp OR 'myosarcoma'/exp OR 'rhabdomyosarcoma'/exp OR 'osteosarcoma'/exp OR 'ewing sarcoma'/exp OR 'clear cell sarcoma'/exp OR 'kaposi sarcoma'/exp OR 'granulocytic sarcoma'/exp OR 'small cell sarcoma'/exp OR sarcoma*:ab,ti OR "soft tissue sarcoma*":ab,ti OR "soft-tissue sarcoma*":ab,ti OR liposarcoma*:ab,ti OR leiomyosarcoma*:ab,ti OR haemangioendotheliosarcoma*:ab,ti OR hemangioendotheliosarcoma*:ab,ti OR haemangioendothelioma*:ab,ti OR hemangioendothelioma*:ab,ti OR haemangiosarcoma*:ab,ti OR hemangiosarcoma*:ab,ti OR angiosarcoma*:ab,ti OR angioendothelioma*:ab,ti OR "kaposi sarcoma*":ab,ti OR "kaposis sarcoma*":ab,ti OR "kaposi`s sarcoma*":ab,ti OR "kaposiform hemangioendothelioma*":ab,ti OR "kaposiform haemangioendothelioma*":ab,ti OR "gastrointestinal stromal tumor*":ab,ti OR "gastrointestinal stromal tumor*":ab,ti OR "pleomorphic sarcoma*":ab,ti OR "spindle cell sarcoma*":ab,ti OR "round cell sarcoma*":ab,ti OR "epithelioid sarcoma*":ab,ti OR "undifferentiated sarcoma*":ab,ti OR "dedifferentiated sarcoma*":ab,ti OR "endometrial stromal sarcoma*":ab,ti OR rhabdomyosarcoma*:ab,ti OR myxofibrosarcoma*:ab,ti OR fibrosarcoma*:ab,ti OR "myofibroblastic sarcoma*":ab,ti OR "malignant fibrous histiocytoma*":ab,ti OR fibroblastoma*:ab,ti OR "fibrous</p> | <p>379</p> |

| | |
|---|--|
| <p>tumor*":ab,ti OR "fibrous tumor*":ab,ti OR "malignant glomus tumor*":ab,ti OR "malignant glomus tumor*":ab,ti OR myofibromatosis:ab,ti OR "malignant peripheral nerve sheath tumor*":ab,ti OR "malignant peripheral nerv sheath tumor*":ab,ti OR "intima sarcoma*":ab,ti OR "intimal sarcoma*":ab,ti OR "epitheloid sarcoma*":ab,ti OR "desmoplastic small round cell tumor*":ab,ti OR "desmoplastic small round cell tumor*":ab,ti OR "clear cell tumor*":ab,ti OR "clear cell tumor*":ab,ti OR "clear cell sarcoma*":ab,ti OR "alveolar soft tissue sarcoma*":ab,ti OR "alveolar soft part sarcoma*":ab,ti OR "malignant mesenchymoma*":ab,ti OR "synovial sarcoma*":ab,ti OR "ewing sarcoma*":ab,ti OR "ewings sarcoma*":ab,ti OR "ewing`s sarcoma*":ab,ti OR chondrosarcoma*:ab,ti OR osteosarcoma*:ab,ti OR "extra-renal rhabdoid tumor*":ab,ti OR "extra-renal rhabdoid tumor*":ab,ti</p> <p>AND 'rehabilitation'/exp OR 'vocational rehabilitation'/exp OR 'occupational therapy'/exp OR 'physiotherapy'/exp OR 'psychoeducation'/exp OR 'aftercare'/mj OR rehabilitation*:ab,ti OR ((medical NEXT/1 rehabilitation*):ab,ti) OR ((work NEXT/1 rehabilitation*):ab,ti) OR ((vocational NEXT/1 rehabilitation*):ab,ti) OR ((occupational NEXT/1 rehabilitation*):ab,ti) OR physiotherap*:ab,ti OR ((physical NEXT/1 therap*):ab,ti) OR sportstherap*:ab,ti OR ((sports NEXT/1 therap*):ab,ti) OR ergotherap*:ab,ti OR psychoeducation:ab,ti OR 'psycho education':ab,ti OR ((follow NEXT/1 up NEXT/1 care):ab,ti) OR aftercare:ab,ti</p> <p>AND (English:la OR german:la)</p> <p>NOT ("Comment":it OR "Letter":it OR "Editorial":it)</p> <p>AND [embase]/lim NOT ([embase]/lim AND [medline]/lim)</p> | |
|---|--|

1.5.10. Recherchestrategie Psychoonkologie

Datum der Recherche: 05.09.2017

Tabelle 21: Suchstrategie Psychoonkologie

| Suchstrategie Medline (via PubMed) | Treffer |
|---|---------|
| <p>("Hemangioendothelioma, Epithelioid"[Mesh] OR "Kaposiform Hemangioendothelioma"[Supplementary Concept] OR "Gastrointestinal Stromal Tumors"[Mesh] OR "Endometrial Stromal Tumors"[Mesh] OR "Sarcoma, Endometrial Stromal"[Mesh] OR "Malignant mesenchymal tumor"[Supplementary Concept] OR "Chondrosarcoma"[Mesh] OR "Chondrosarcoma, Mesenchymal"[Mesh] OR "Desmoplastic Small Round Cell Tumor"[Mesh] OR "Fibrosarcoma"[Mesh] OR "Dermatofibrosarcoma"[Mesh] OR "Hemangiosarcoma"[Mesh] OR "Histiocytoma, Malignant Fibrous"[Mesh] OR "Leiomyosarcoma"[Mesh] OR "Liposarcoma"[Mesh] OR "Liposarcoma, Myxoid"[Mesh] OR "Myosarcoma"[Mesh] OR "Rhabdomyosarcoma"[Mesh] OR "Rhabdomyosarcoma, Alveolar"[Mesh] OR "Myxosarcoma"[Mesh] OR "Osteosarcoma"[Mesh] OR "Sarcoma, Ewing"[Mesh] OR "Sarcoma, Alveolar Soft Part"[Mesh] OR "Sarcoma, Clear Cell"[Mesh] OR "Sarcoma, Kaposi"[Mesh] OR "Sarcoma, Myeloid"[Mesh] OR "Sarcoma, Small Cell"[Mesh] OR "Sarcoma, Synovi-</p> | 72 |

| | |
|--|-----------------------|
| <p>al"[Mesh] OR sarcoma* [tiab] OR soft tissue sarcoma* [tiab] OR soft-tissue sarcoma* [tiab] OR liposarcoma* [tiab] OR leiomyosarcoma* [tiab] OR haemangioendotheliosarcoma* [tiab] OR hemangioendotheliosarcoma* [tiab] OR haemangioendothelioma* [tiab] OR hemangioendothelioma* [tiab] OR haemangiosarcoma* [tiab] OR hemangiosarcoma* [tiab] OR angiosarcoma* [tiab] OR angioendothelioma* [tiab] OR kaposi sarcoma* [tiab] OR kaposi sarcoma* [tiab] OR kaposi`s sarcoma* [tiab] OR kaposiform hemangioendothelioma* [tiab] OR kaposiform haemangioendothelioma* [tiab] OR gastrointestinal stromal tumor* [tiab] OR gastrointestinal stromal tumor* [tiab] OR pleomorphic sarcoma* [tiab] OR spindle cell sarcoma* [tiab] OR round cell sarcoma* [tiab] OR epithelioid sarcoma* [tiab] OR undifferentiated sarcoma* [tiab] OR dedifferentiated sarcoma* [tiab] OR endometrial stromal sarcoma* [tiab] OR rhabdomyosarcoma* [tiab] OR myxofibrosarcoma* [tiab] OR fibrosarcoma* [tiab] OR myofibroblastic sarcoma* [tiab] OR malignant fibrous histiocytoma* [tiab] OR fibroblastoma* [tiab] OR fibrous tumor* [tiab] OR fibrous tumor* [tiab] OR malignant glomus tumor* [tiab] OR malignant glomus tumor* [tiab] OR myofibromatosis [tiab] OR malignant peripheral nerve sheath tumor* [tiab] OR malignant peripheral nerve sheath tumor* [tiab] OR intima sarcoma* [tiab] OR intimal sarcoma* [tiab] OR epithelioid sarcoma* [tiab] OR desmoplastic small round cell tumor* [tiab] OR desmoplastic small round cell tumor* [tiab] OR clear cell tumor* [tiab] OR clear cell tumor* [tiab] OR clear cell sarcoma* [tiab] OR alveolar soft tissue sarcoma* [tiab] OR alveolar soft part sarcoma* [tiab] OR malignant mesenchymoma* [tiab] OR synovial sarcoma* [tiab] OR ewing sarcoma* [tiab] OR ewings sarcoma* [tiab] OR ewing`s sarcoma* [tiab] OR chondrosarcoma* [tiab] OR osteosarcoma* [tiab] OR extra-renal rhabdoid tumor* [tiab] OR extra-renal rhabdoid tumor* [tiab])</p> <p>AND "Psychotherapy"[Mesh] OR "Psychotherapy, Group"[Mesh] OR "Cognitive Therapy"[Mesh] OR "Behavior Therapy"[Mesh] OR "Psychoanalytic Therapy"[Mesh] OR "Psychosocial Support Systems"[Mesh] OR "Relaxation"[Mesh] OR "Relaxation Therapy"[Mesh] OR "Imagery (Psychotherapy)"[Mesh] OR "Art Therapy"[Mesh] OR psychoeducation*[tiab] OR psychoeducation*[tiab] OR psychotherap*[tiab] OR psycho-therap*[tiab] OR cognitive therap*[tiab] OR behavior therap*[tiab] OR behavioral therap*[tiab] OR psychoanalytic technique*[tiab] OR psychoanalytic technic*[tiab] OR psychoanalytic method*[tiab] OR psychoanalytical technique*[tiab] OR psychoanalytical technic*[tiab] OR psychoanalytical method*[tiab] OR (psychosocial[tiab] AND (counsel*[tiab] OR guidance[tiab] OR advise[tiab] OR consult*[tiab] OR mentoring[tiab] OR support*[tiab] OR intervention*[tiab])) OR relaxation technique*[tiab] OR relaxation technic*[tiab] OR relaxation method*[tiab] OR imagery technique*[tiab] OR imagery technic*[tiab] OR imagery method*[tiab] OR art therap*[tiab] OR artistic therap*[tiab]</p> <p>AND (english [la] OR german [la])</p> <p>NOT ("Comment" [Publication Type] OR "Letter" [Publication Type] OR "Editorial" [Publication Type])</p> | |
| <p>Suchstrategie Embase (via Embase)</p> | <p>Treffer</p> |
| <p>'soft tissue sarcoma'/exp OR 'hemangioendothelioma'/exp OR 'kaposiform</p> | <p>113</p> |

hemangioendothelioma'/exp OR 'gastrointestinal stromal tumor'/exp OR 'endometrium sarcoma'/exp OR 'endometrial stromal tumor'/exp OR 'malignant mesenchymoma'/exp OR 'chondrosarcoma'/exp OR 'desmoplastic small round cell tumor'/exp OR 'fibrosarcoma'/exp OR 'dermatofibrosarcoma protuberans'/exp OR 'angiosarcoma'/exp OR 'leiomyosarcoma'/exp OR 'myosarcoma'/exp OR 'rhabdomyosarcoma'/exp OR 'osteosarcoma'/exp OR 'ewing sarcoma'/exp OR 'clear cell sarcoma'/exp OR 'kaposi sarcoma'/exp OR 'granulocytic sarcoma'/exp OR 'small cell sarcoma'/exp OR sarcoma*:ab,ti OR "soft tissue sarcoma*":ab,ti OR "soft-tissue sarcoma*":ab,ti OR liposarcoma*:ab,ti OR leiomyosarcoma*:ab,ti OR haemangioendotheliosarcoma*:ab,ti OR hemangioendotheliosarcoma*:ab,ti OR haemangioendothelioma*:ab,ti OR hemangioendothelioma*:ab,ti OR haemangiosarcoma*:ab,ti OR hemangiosarcoma*:ab,ti OR angiosarcoma*:ab,ti OR angioendothelioma*:ab,ti OR "kaposi sarcoma*":ab,ti OR "kaposi's sarcoma*":ab,ti OR "kaposiform hemangioendothelioma*":ab,ti OR "kaposiform haemangioendothelioma*":ab,ti OR "gastrointestinal stromal tumor*":ab,ti OR "gastrointestinal stromal tumor*":ab,ti OR "pleomorphic sarcoma*":ab,ti OR "spindle cell sarcoma*":ab,ti OR "round cell sarcoma*":ab,ti OR "epitheloid sarcoma*":ab,ti OR "undifferentiated sarcoma*":ab,ti OR "dedifferentiated sarcoma*":ab,ti OR "endometrial stromal sarcoma*":ab,ti OR rhabdomyosarcoma*:ab,ti OR myxofibrosarcoma*:ab,ti OR fibrosarcoma*:ab,ti OR "myofibroplastic sarcoma*":ab,ti OR "malignant fibrous histiocytoma*":ab,ti OR fibroblastoma*:ab,ti OR "fibrous tumor*":ab,ti OR "fibrous tumor*":ab,ti OR "malignant glomus tumor*":ab,ti OR "malignant glomus tumor*":ab,ti OR myofibromatosis:ab,ti OR "malignant peripheral nerve sheath tumor*":ab,ti OR "malignant peripheral nerv sheath tumor*":ab,ti OR "intima sarcoma*":ab,ti OR "intimal sarcoma*":ab,ti OR "epitheloid sarcoma*":ab,ti OR "desmoplastic small round cell tumor*":ab,ti OR "desmoplastic small round cell tumor*":ab,ti OR "clear cell tumor*":ab,ti OR "clear cell tumor*":ab,ti OR "clear cell sarcoma*":ab,ti OR "alveolar soft tissue sarcoma*":ab,ti OR "alveolar soft part sarcoma*":ab,ti OR "malignant mesenchymoma*":ab,ti OR "synovial sarcoma*":ab,ti OR "ewing sarcoma*":ab,ti OR "ewings sarcoma*":ab,ti OR "ewing`s sarcoma*":ab,ti OR chondrosarcoma*:ab,ti OR osteosarcoma*:ab,ti OR "extra-renal rhabdoid tumor*":ab,ti OR "extra-renal rhabdoid tumor*":ab,ti

AND 'psychoeducation'/exp OR 'psychotherapy'/exp OR 'couple therapy'/exp OR 'group therapy'/exp OR 'cognitive therapy'/exp OR 'behavior therapy'/exp OR 'psychoanalysis'/exp OR 'psychosocial care'/exp OR 'psychosocial intervention'/exp OR 'relaxation training'/exp OR 'guided imagery'/exp OR 'art therapy'/exp OR psychoeducation*:ab,ti OR 'psycho education*":ab,ti OR psychotherap*:ab,ti OR 'psycho therap*":ab,ti OR ((cognitive NEXT/1 therap*):ab,ti) OR ((behavior NEXT/1 therap*):ab,ti) OR ((behavioral NEXT/1 therap*):ab,ti) OR ((psychoanalytic NEXT/1 technique*):ab,ti) OR ((psychoanalytic NEXT/1 technic*):ab,ti) OR ((psychoanalytic NEXT/1 method*):ab,ti) OR ((psychoanalytical NEXT/1 technique*):ab,ti) OR ((psychoanalytical NEXT/1 technic*):ab,ti) OR ((psychoanalytical NEXT/1 method*):ab,ti) OR (psychosocial:ab,ti AND (counsel*:ab,ti OR guidance:ab,ti OR advise:ab,ti OR consult*:ab,ti OR mentoring:ab,ti OR support*:ab,ti OR intervention*:ab,ti)) OR ((relaxation NEXT/1 technique*):ab,ti) OR ((relaxation NEXT/1 technic*):ab,ti) OR ((relaxation

| | |
|---|--|
| NEXT/1 method*):ab,ti) OR ((imagery NEXT/1 technique*):ab,ti) OR ((imagery NEXT/1 technic*):ab,ti) OR ((imagery NEXT/1 method*):ab,ti) OR ((art NEXT/1 therap*):ab,ti) OR ((artistic NEXT/1 therap*):ab,ti) | |
|---|--|

AND (English:la OR german:la)

NOT ("Comment":it OR "Letter":it OR "Editorial":it)

AND [embase]/lim NOT ([embase]/lim AND [medline]/lim)

1.6. Studienselektion

Die identifizierte Literatur wurde von zwei Gutachtern unabhängig voneinander selektiert. Zunächst wurden die Abstracts sämtlicher in den Datenbanken erzielten Treffer auf Erfüllung der *a-priori* definierten Einschlusskriterien hin geprüft und anschließend, bei potenzieller Relevanz, die Volltexte. Unstimmigkeiten wurden bis zum Konsens diskutiert. Alle Referenzen der eingeschlossenen Primärstudien wurden auf potenziell relevante Literatur hin untersucht und ggf. der Volltext geprüft. Falls zu den Rechercheaufträgen Chirurgie-Ablation oder Chirurgie-Strahlentherapie ein systematischer Review vorlag, wurden die Primärstudien, die den Einschlusskriterien entsprachen, eingeschlossen und extrahiert.

2. Bewertung des Vertrauens in die Evidenz gemäß GRADE

Die Bewertung der den Empfehlungen zugrundeliegenden Evidenz erfolgte gemäß GRADE (Grading of Recommendations, Assessment, Development and Evaluation) (1). In die Qualitätsbewertung der Evidenz gingen die als patienten-relevant und wichtig erachteten Endpunkte (sogenannte kritische Endpunkte, siehe oben) ein, für die jeweils das Vertrauen in die zugrundeliegende Evidenz mittels des GRADE-Systems ermittelt wurde. Für therapeutische Fragestellungen sind diese Endpunkte insbesondere das Gesamtüberleben, die krankheitsspezifische Mortalität, das progressionsfreie Überleben, die Lebensqualität, und akute oder Langzeitnebenwirkungen. Die Qualität der Evidenz wird in die Kategorien „Hohe Sicherheit der Evidenz“, „Moderate Sicherheit der Evidenz“, „Geringe Sicherheit der Evidenz“ und „sehr geringe Sicherheit der Evidenz“ eingestuft (Appendix A).

Zur Abwertung des Vertrauensgrades führten folgende Studien- oder Qualitätscharakteristika (2):

- Ein nicht-randomisiertes Studiendesign (2)
- Ein potentiell hohes Verzerrungsrisiko des zugrundeliegenden Evidenzkörpers (3)
- Heterogenität oder Inkonsistenz eines Ergebnisparameters in den betrachteten Einzelstudien (3)
- Ein unpräzise geschätzter Effekt mit einem breiten Konfidenzintervall (3)
- Ein Ergebniswert der indirekt auf die Zielpopulation oder den untersuchten Ergebnisparameter zu übertragen ist (3)
- Ein Hinweis auf Publikationsbias (3)

Folgende Charakteristika führten zur Aufwertung der Qualität des zugrundeliegenden Evidenzkörpers (3):

- Eine Dosis-Wirkungsbeziehung
- Ein sehr ausgeprägter Effekt

3. Studienbewertung (Bewertung des Risikos für systematische Verzerrung)

Für die Studienbewertung von Primärstudien zu Interventionen wurde das „Cochrane Risk of Bias Tool“ verwendet (Appendix B) (4). Jede Frage wurde mit „hohem Risiko für Verzerrung“, „niedrigem Risiko für Verzerrung“, oder „unklarem Risiko für Verzerrung“ bewertet. Da auf Grund der Breite der Fragestellung eine *a-priori* Definition des Items „other source of bias“ nicht möglich erschien, wurde, falls dieses Item nicht mit „low risk of bias“ bewertet wurde, der Grund hierfür angegeben.

Nicht randomisierte Beobachtungsstudien wurden mit der Newcastle-Ottawa Scale (NOS) (Appendix C) bewertet (5). Die Bewertung erfolgt nach „hoher Qualität“ entsprechend einem geringen Risiko für Verzerrung und „niedriger Qualität“ entsprechend einem hohen Risiko für Verzerrung.

Die Bewertung der Gefahr für systematische Verzerrung bzw. methodologische Qualität wurde unabhängig von zwei Gutachtern vorgenommen. Jegliche Diskrepanz wurde bis zum Konsens diskutiert.

4. Datenextraktion und Durchführung von Metaanalysen

Es wurden die folgenden Daten aus den Primärstudien in standardisierte, vorab getestete Tabellen extrahiert:

- Ein-/Ausschlusskriterien: Alle demografischen und klinischen Ein-/Ausschlusskriterien wurden extrahiert. Formale Einschlusskriterien wurden nicht berücksichtigt (z.B. Einverständniserklärung).
- Region/Setting: Land, Klinik(en) und Zeitraum in dem die Studie durchgeführt wurde.
- Interventions-/Kontrollgruppe (Interventionsstudien): Für die Interventions-/Kontrollgruppe wurden für Systemtherapien jeweils die Dosierung, die Häufigkeit der Einnahme/Anwendung, die Applikationsform, die Dauer der Anwendung und ggf. weitere relevante Informationen (z.B. Halbwertszeit, ROC) aufgeführt. Für Operationsverfahren (z.B. Resektion) und apparative Maßnahmen (z.B. Radiotherapie) wurden Angaben zur Durchführung und technische Angaben extrahiert.
- Prognosestudien (Resektionsränder): Angaben zur Definition/Messung des Faktors.
- Patientenfluss: Angegeben wurde die Anzahl an randomisierten/eingeschlossenen und analysierten Patienten.
- Analysekollektiv: Soweit möglich wurden die Daten der Intention-to-Treat Analyse verwendet.
- Follow-up: Bei mehreren Erhebungszeitpunkten wurde auf den letzten Follow-up zurückgegriffen, vorausgesetzt es handelt sich um eine kumulative Betrachtung aller Ereignisse. Für jeden Endpunkt wurde der Erhebungszeitpunkt (nach Randomisierung) bzw. die Dauer des Follow-up's angegeben. Angaben zu unerwünschten Ereignissen (z.B. Toxizität) wurden deskriptiv dargestellt.

Es wurde eine Inverse-Variance-Random-Effects-Metanalyse mittels der Software RevMan5 durchgeführt (6). Zur Berechnung der relativen Effektmaße mit zugehörigen Konfidenzintervallen wurde die Anzahl der Ereignisse je Gruppe sowie die Gesamtzahl an Patienten je Gruppe extrahiert.

Falls keine Metaanalyse durchgeführt worden war, wurden die Ergebnisse für die einzelnen Studien extrahiert. Dabei wurden, falls berichtet, das Effektmaß selbst oder zur Berechnung des Effektmaßes die Anzahl der Ereignisse je Gruppe sowie die Gesamtzahl an Patienten je Gruppe extrahiert. Sofern nötig, wurde daraus das Effektmaß berechnet. Die statistische Signifikanz wurde mit Konfidenzintervallen oder alternativ mit p-Werten angegeben, sofern berichtet.

Für Ereignisse wurde für jeden der Endpunkte die Rate (%) oder für seltene Ereignisse die Anzahl je Gruppe extrahiert und falls angegeben, die relativen Effektmaße (Odds Ratio, Relatives Risiko, Hazard Ratio). Die relativen Effektmaße wurden vereinheitlicht, so dass die Kontrollgruppe immer die Referenzkategorie darstellt (Nenner des Vergleichs).

Die Ergebnisdaten werden in den *GRADE Summary-of-Findings Tables* dargestellt.

Mehrere Publikationen, die auf derselben Studie bzw. demselben Studienkollektiv basierten, wurden zusammengeführt. Die gesamte Datenextraktion wurde von einem Gutachter vorgenommen und von einem zweiten Gutachter qualitätsgesichert. Jegliche Unstimmigkeiten wurden bis zum Konsens diskutiert.

5. Ergebnisse der Literaturrecherche

Durch die Recherche in den Datenbanken und durch Prüfung der Referenzen wurden insgesamt 8.428 Treffer identifiziert. Bei 317 Publikationen wurden die Volltexte auf Erfüllung der oben genannten Einschlusskriterien geprüft. 92 Publikationen erfüllten alle Einschlusskriterien. Der Selektionsprozess für die einzelnen Fragestellungen ist in Abbildung 1-9 dargestellt. Für die Recherchen Chirurgie-Ablation und Psychoonkologie konnten dabei keine Treffer identifiziert werden.

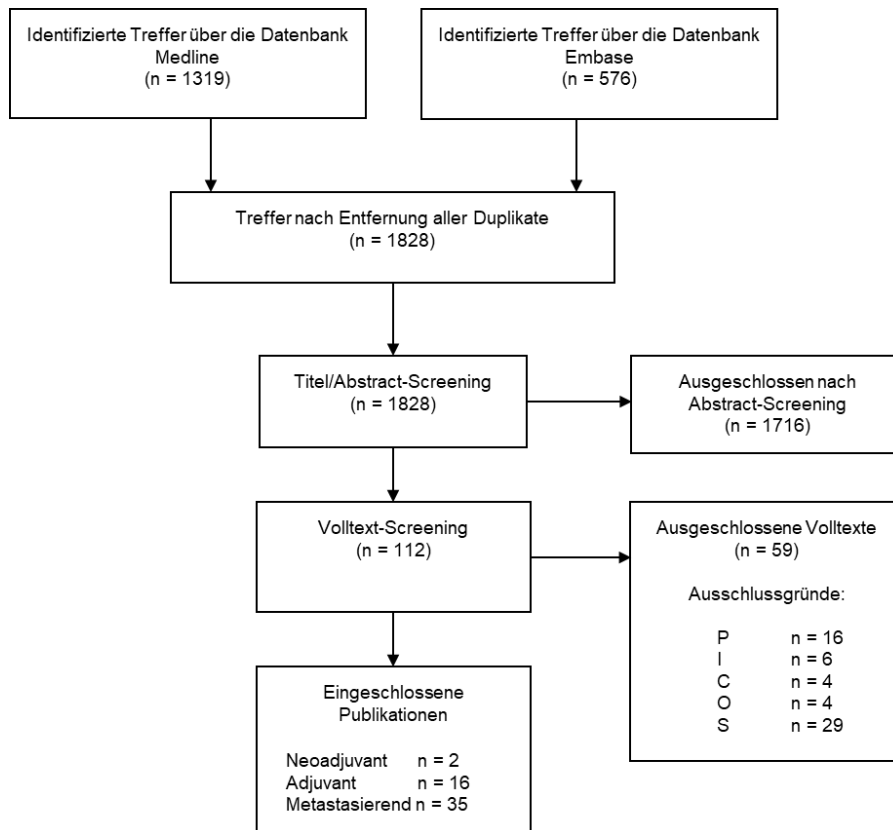


Abbildung 1: Flowchart Systemtherapie

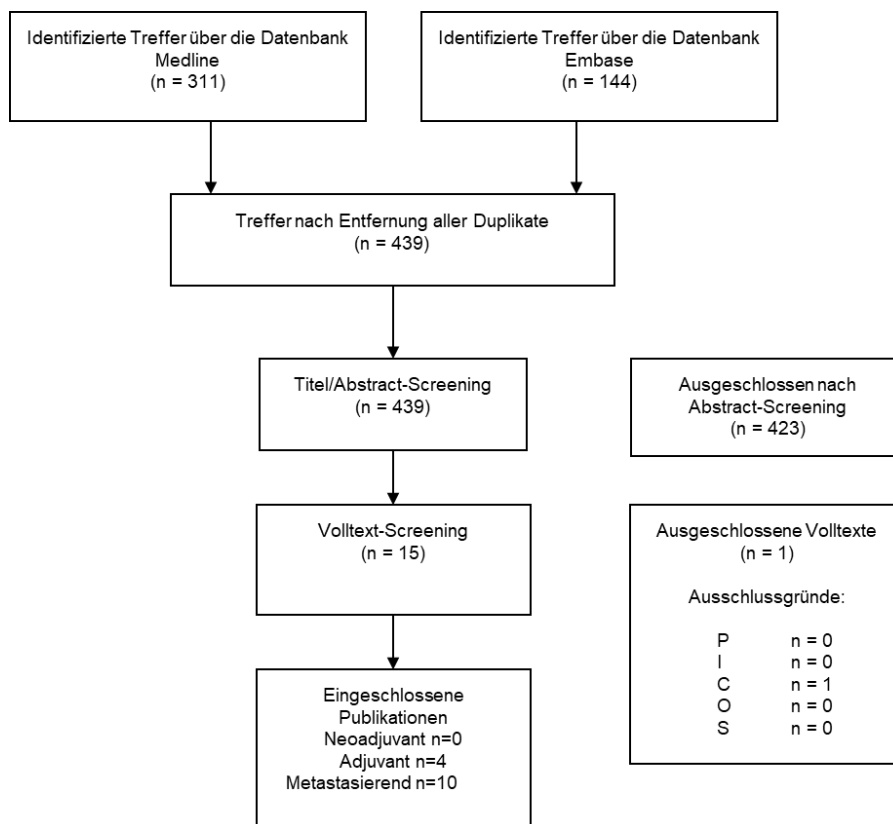


Abbildung 2: Flowchart Systemtherapie-GIST

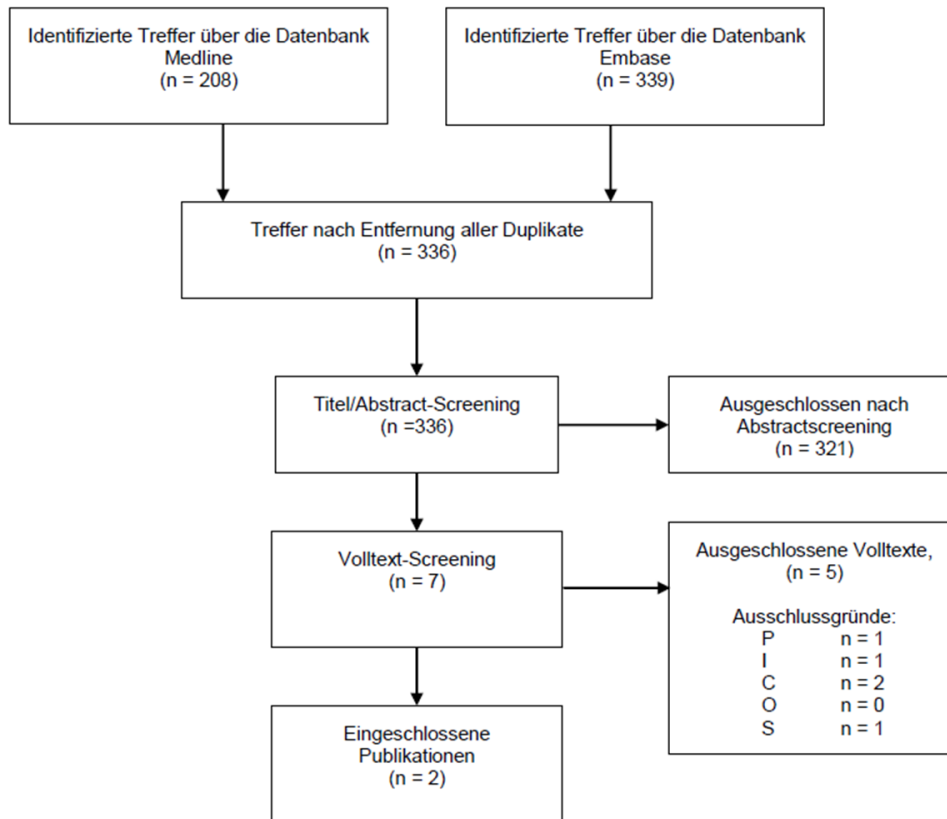


Abbildung 3: Flowchart Systemtherapie-GIST (adjuvante Imatinibtherapie)

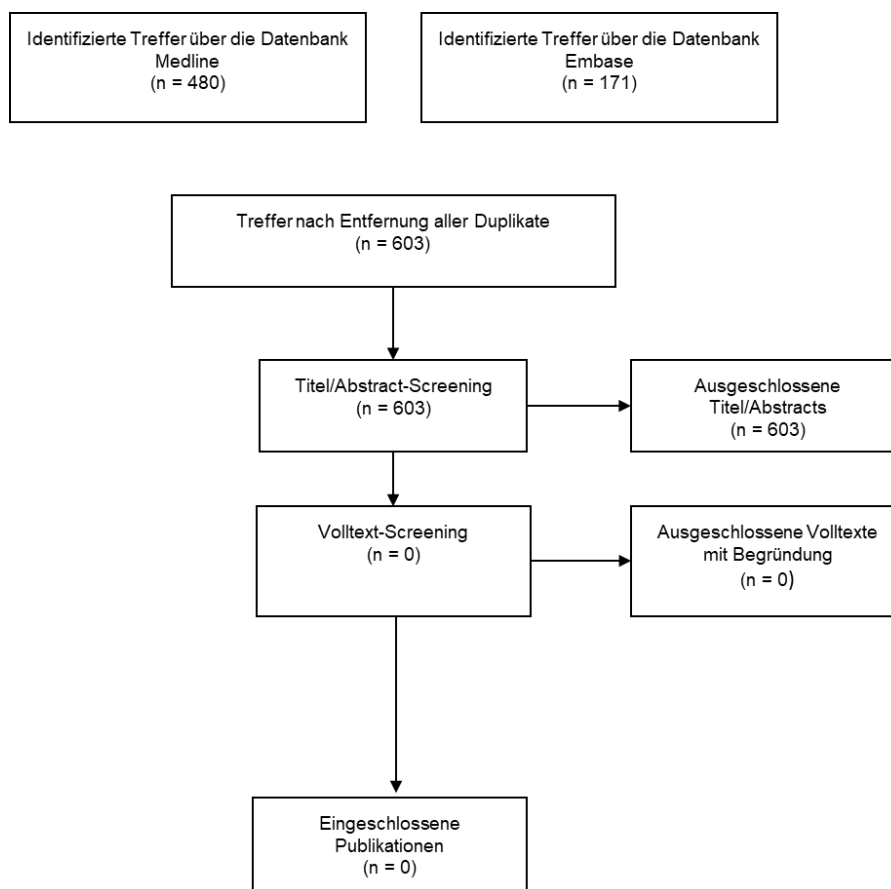


Abbildung 4: Flowchart Chirurgie-Ablation

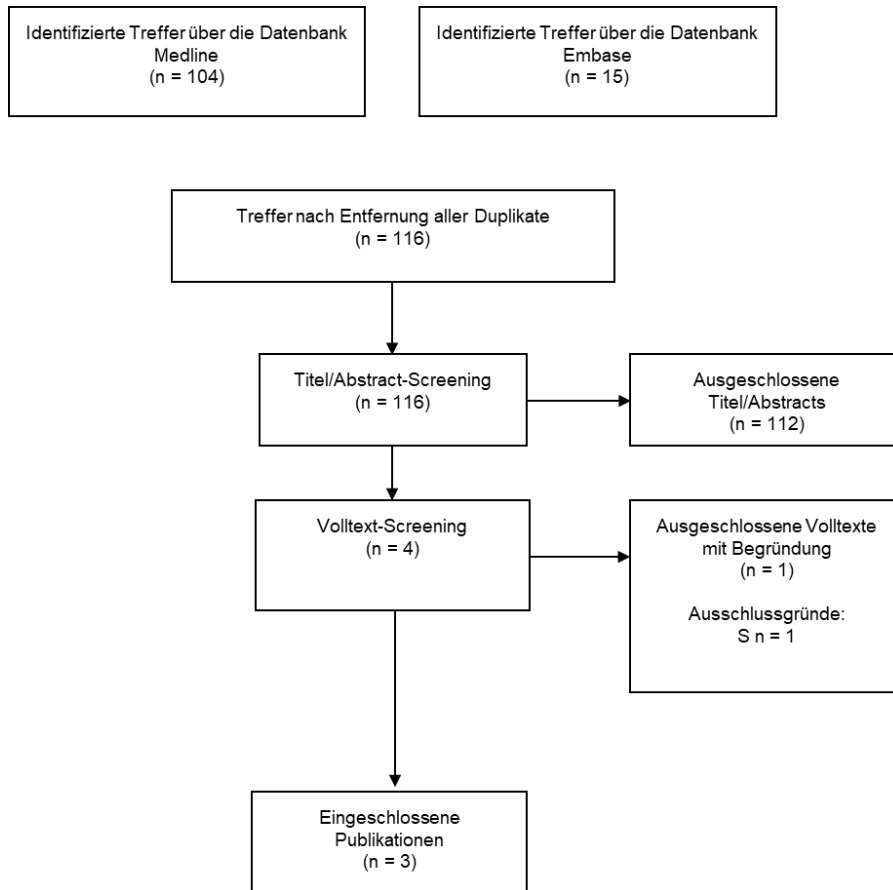


Abbildung 5: Flowchart Chirurgie-Hyperthermie

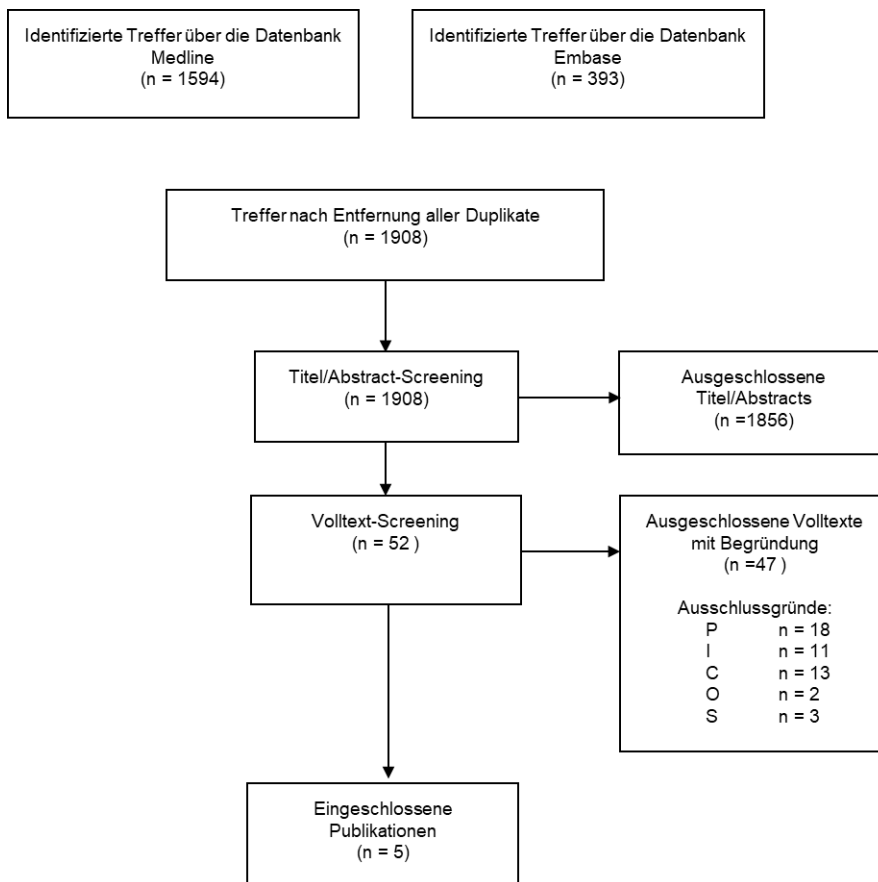


Abbildung 6: Flowchart Chirurgie-OP

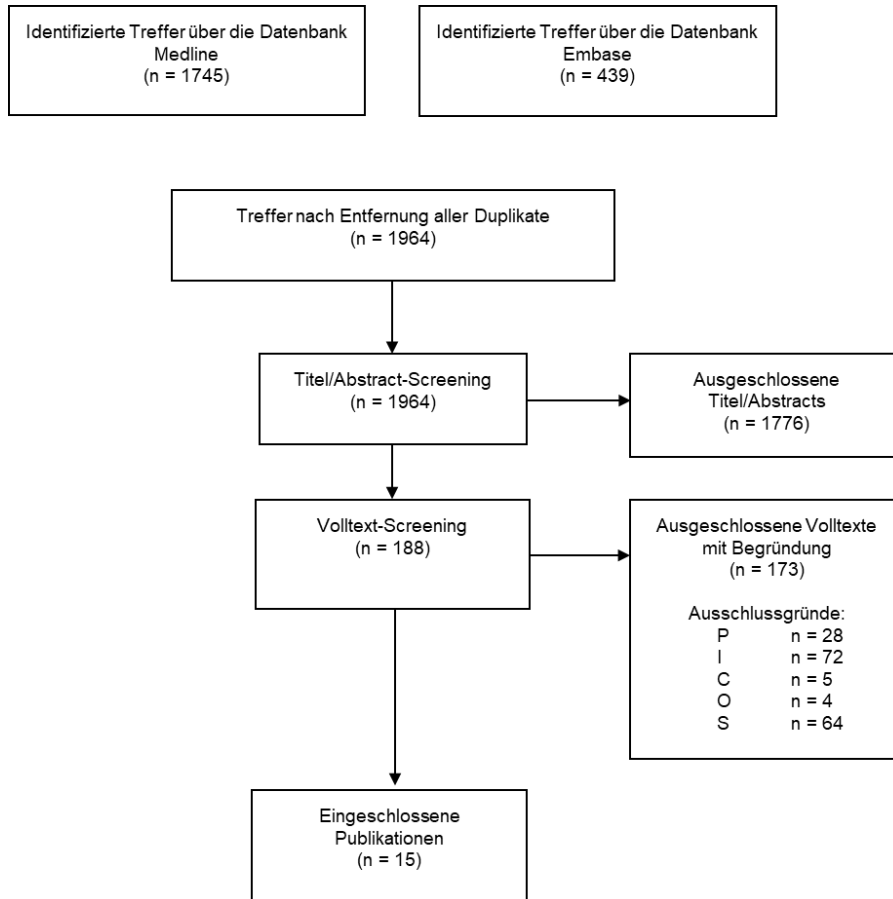


Abbildung 7: Flowchart Chirurgie-Resektionsränder

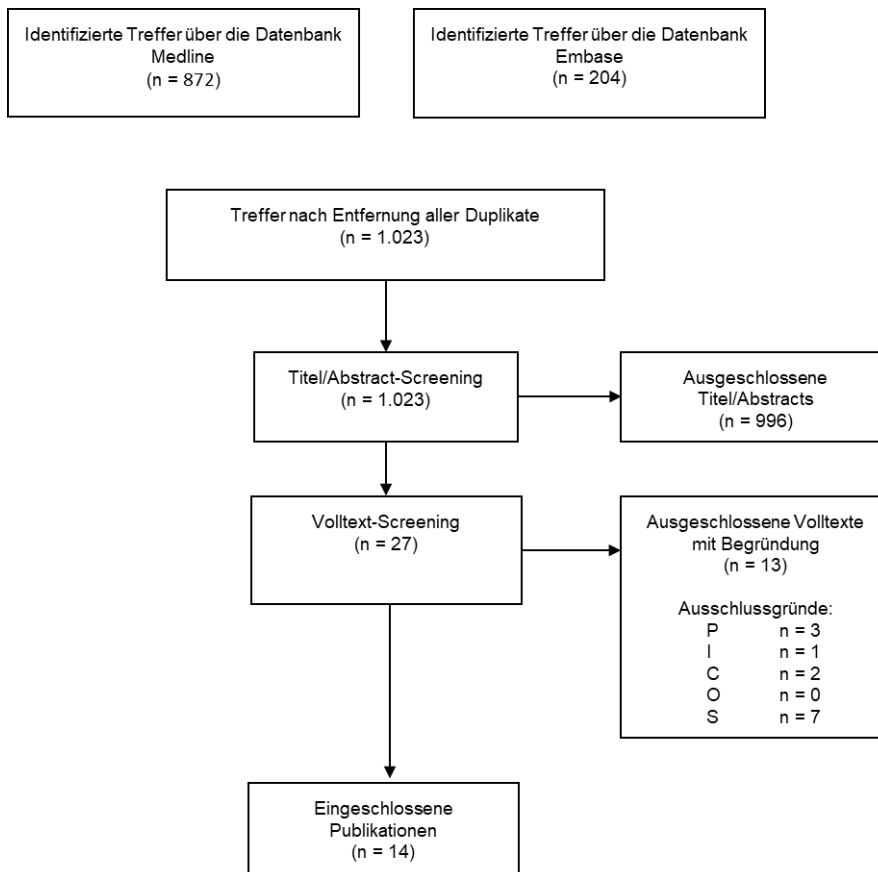


Abbildung 8: Flowchart Chirurgie-Strahlentherapie

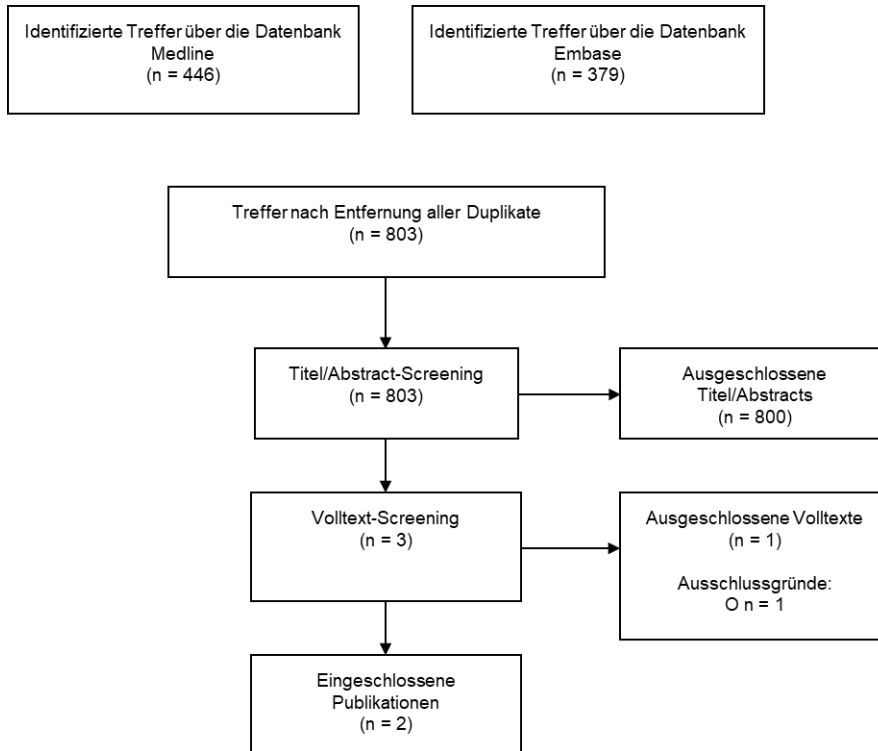


Abbildung 9: Flowchart Rehabilitation

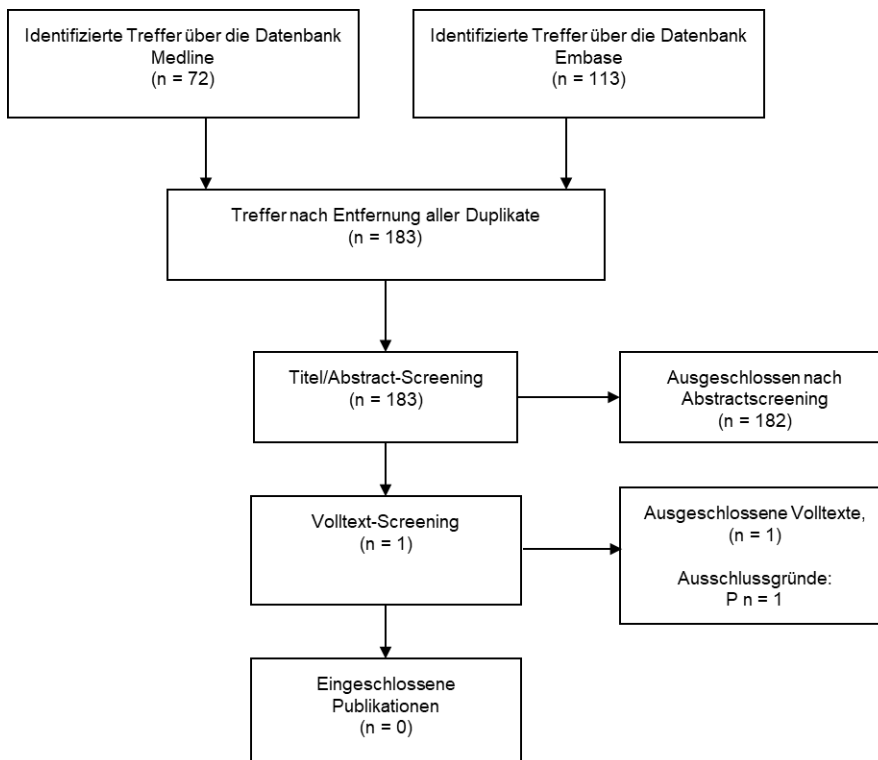


Abbildung 10: Flowchart Psychoonkologie

6. Appendix

Appendix A: Level of Evidence nach GRADE

| Qualität der Evidenz | Beschreibung | Symbol |
|-----------------------|---|--------|
| Hohe Qualität | Wir sind sehr sicher, dass der wahre Effekt nahe bei dem Effektschätzer liegt. | ⊕⊕⊕⊕ |
| Moderate Qualität | Wir haben mäßig viel Vertrauen in den Effektschätzer: der wahre Effekt ist wahrscheinlich nahe bei dem Effektschätzer, aber es besteht die Möglichkeit, dass er relevant verschieden ist. | ⊕⊕⊕⊖ |
| Geringe Qualität | Unser Vertrauen in den Effektschätzer ist begrenzt: Der wahre Effekt kann durchaus relevant verschieden vom Effektschätzer sein. | ⊕⊕⊖⊖ |
| Sehr geringe Qualität | Wir haben nur sehr wenig Vertrauen in den Effektschätzer: Der wahre Effekt ist wahrscheinlich relevant verschieden vom Effektschätzer. | ⊕⊖⊖⊖ |

Appendix B: Cochrane Risk of Bias

| Domain | Support for judgement | Review authors' judgement |
|--|--|---|
| <i>Selection bias.</i> | | |
| Random sequence generation. | Describe the method used to generate the allocation sequence in sufficient detail to allow an assessment of whether it should produce comparable groups. | Selection bias (biased allocation to interventions) due to inadequate generation of a randomised sequence. |
| Allocation concealment. | Describe the method used to conceal the allocation sequence in sufficient detail to determine whether intervention allocations could have been foreseen in advance of, or during, enrolment. | Selection bias (biased allocation to interventions) due to inadequate concealment of allocations prior to assignment. |
| <i>Performance bias.</i> | | |
| Blinding of participants and personnel <i>Assessments should be made for each main outcome (or class of outcomes).</i> | Describe all measures used, if any, to blind study participants and personnel from knowledge of which intervention a participant received. Provide any information relating to whether the intended blinding was effective. | Performance bias due to knowledge of the allocated interventions by participants and personnel during the study. |
| <i>Detection bias.</i> | | |
| Blinding of outcome assessment <i>Assessments should be made for each main outcome (or class of outcomes).</i> | Describe all measures used, if any, to blind outcome assessors from knowledge of which intervention a participant received. Provide any information relating to whether the intended blinding was effective. | Detection bias due to knowledge of the allocated interventions by outcome assessors. |
| <i>Attrition bias.</i> | | |
| Incomplete outcome data <i>Assessments should be made for each main outcome (or class of outcomes).</i> | Describe the completeness of outcome data for each main outcome, including attrition and exclusions from the analysis. State whether attrition and exclusions were reported, the numbers in each intervention group (compared with total randomized participants), reasons for attrition/exclusions where reported, and any re-inclusions in analyses performed by the review authors. | Attrition bias due to amount, nature or handling of incomplete outcome data. |
| <i>Reporting bias.</i> | | |
| Selective reporting. | State how the possibility of selective outcome reporting was examined by the review authors, and what was found. | Reporting bias due to selective outcome reporting. |
| <i>Other bias.</i> | | |
| Other sources of bias. | State any important concerns about bias not addressed in the other domains in the tool. If particular questions/entries were pre-specified in the review's protocol, responses should be provided for each question/entry. | Bias due to problems not covered elsewhere in the table. |

Appendix C: Newcastle-Ottawa Quality Assessment Scale (NOS)

NEWCASTLE - OTTAWA QUALITY ASSESSMENT SCALE COHORT STUDIES

Note: A study can be awarded a maximum of one star for each numbered item within the Selection and Outcome categories. A maximum of two stars can be given for Comparability

Selection

- 1) Representativeness of the exposed cohort
 - a) truly representative of the average _____ (describe) in the community *
 - b) somewhat representative of the average _____ in the community *
 - c) selected group of users eg nurses, volunteers
 - d) no description of the derivation of the cohort
- 2) Selection of the non exposed cohort
 - a) drawn from the same community as the exposed cohort *
 - b) drawn from a different source
 - c) no description of the derivation of the non exposed cohort
- 3) Ascertainment of exposure
 - a) secure record (eg surgical records) *
 - b) structured interview *
 - c) written self report
 - d) no description
- 4) Demonstration that outcome of interest was not present at start of study
 - a) yes *
 - b) no

Comparability

- 1) Comparability of cohorts on the basis of the design or analysis
 - a) study controls for _____ (select the most important factor) *
 - b) study controls for any additional factor * (This criteria could be modified to indicate specific control for a second important factor.)

Outcome

- 1) Assessment of outcome
 - a) independent blind assessment *
 - b) record linkage *
 - c) self report
 - d) no description
- 2) Was follow-up long enough for outcomes to occur
 - a) yes (select an adequate follow up period for outcome of interest) *
 - b) no
- 3) Adequacy of follow up of cohorts
 - a) complete follow up - all subjects accounted for *
 - b) subjects lost to follow up unlikely to introduce bias - small number lost - > ____ % (select an adequate %) follow up, or description provided of those lost) *
 - c) follow up rate < ____ % (select an adequate %) and no description of those lost
 - d) no statement

Appendix D: Liste der ausgeschlossenen Studien mit Gründen

| Ausgeschlossene Volltexte Rechercheauftrag Systemtherapie | Ausschluss- grund |
|---|----------------------|
| Abraham J. Pazopanib in advanced soft tissue Sarcoma. Community Oncology. 2012;9(11):334-5. | S |
| Alvegard TA, Berg NO, Baldetorp B, Ferno M, Killander D, Ranstam J, et al. Cellular DNA content and prognosis of high-grade soft tissue sarcoma: the Scandinavian Sarcoma Group experience. Journal of clinical oncology : official journal of the American Society of Clinical Oncology. 1990;8(3):538-47. | O |
| Alvegard TA, Berg NO, Ranstam J, Rydholm A, Rooser B. Prognosis in high-grade soft tissue sarcomas. The Scandinavian Sarcoma Group experience in a randomized adjuvant chemotherapy trial. Acta orthopaedica Scandinavica. 1989;60(5):517-21. | I |
| Antman K, Crowley J, Balcerzak SP, Kempf RA, Weiss RB, Clamon GH, et al. A Southwest Oncology Group and Cancer and Leukemia Group B phase II study of doxorubicin, dacarbazine, ifosfamide, and mesna in adults with advanced osteosarcoma, Ewing's sarcoma, and rhabdomyosarcoma. Cancer. 1998;82(7):1288-95. | S |
| Antman K, Crowley J, Balcerzak SP, Rivkin SE, Weiss GR, Elias A, et al. An intergroup phase III randomized study of doxorubicin and dacarbazine with or without ifosfamide and mesna in advanced soft tissue and bone sarcomas. Journal of clinical oncology : official journal of the American Society of Clinical Oncology. 1993;11(7):1276-85. | P |
| Beane JD, Yang JC, White D, Steinberg S, Rosenberg SA, Rudloff U. Efficacy of adjuvant radiation therapy in the treatment of soft tissue sarcomas of the extremity: 20-year follow-up of a randomized prospective trial. Annals of surgical oncology. 2014;21(1):S6-S7. | I |
| Beane JD, Yang JC, White D, Steinberg SM, Rosenberg SA, Rudloff U. Efficacy of adjuvant radiation therapy in the treatment of soft tissue sarcoma of the extremity: 20-year follow-up of a randomized prospective trial. Annals of surgical oncology. 2014;21(8):2484-9. | I |
| Benjamin RS, Gottlieb JA, Baker LO, Sinkovics JG. Cyvadic VS cyvadact: A randomized trial of cyclophosphamide (CY), vincristine (V), and adriamycin (A), plus dacarbazine (DIC), or actinomycin D (DACT) in metastatic sarcomas. Proceedings of the American Association for Cancer Research. 1976;Vol. 17:C-80. | S |
| Benson C, Ray-Coquard I, Sleijfer S, Litiere S, Blay JY, Le Cesne A, et al. Outcome of uterine sarcoma patients treated with pazopanib: A retrospective analysis based on two European Organisation for Research and Treatment of Cancer (EORTC) Soft Tissue and Bone Sarcoma Group (STBSG) clinical trials 62043 and 62072. Gynecologic oncology. 2016;142(1):89-94. | S |
| Berry V, Basson L, Bogart E, Mir O, Blay JY, Italiano A, et al. REGO-SARC: Regorafenib versus placebo in doxorubicin-refractory soft-tissue sarcoma-A quality-adjusted time without symptoms of progression or toxicity analysis. Cancer. 2017;123(12):2294-302. | I |
| Berstock DA, Baum M. Adjuvant chemotherapy for common solid tumors. Advances in cancer research. 1983;39:315-27. | S |
| Bisogno G, De Salvo GL, Bergeron C, Carli M, Ferrari A, Jenney M, et al. | S |

| | |
|--|---|
| The role of doxorubicin in the treatment of rhabdomyosarcoma: Preliminary results from the EPSSG RMS2005 randomized trial. <i>Pediatric Blood and Cancer</i> . 2014;61:S133-S4. | |
| Blackledge G, Steward WP, Verweij J, Mouridsen H, Bramwell V, Schutte J, et al. Experience with ifosfamide in the EORTC Soft Tissue and Bone Sarcoma Group. <i>Seminars in oncology</i> . 1992;19(1 Suppl 1):14-8. | S |
| Blay JY, Casali P, Nieto A, Tanovic A, Le Cesne A. Efficacy and safety of trabectedin as an early treatment for advanced or metastatic liposarcoma and leiomyosarcoma. <i>Future oncology (London, England)</i> . 2014;10(1):59-68. | P |
| Blum RH, Edmonson J, Ryan L, Pelletier L. Efficacy of ifosfamide in combination with doxorubicin for the treatment of metastatic soft-tissue sarcoma. The Eastern Cooperative Oncology Group. <i>Cancer chemotherapy and pharmacology</i> . 1993;31 Suppl 2:S238-40. | O |
| Borden EC, Amato DA, Rosenbaum C, Enterline HT, Shiraki MJ, Creech RH, et al. Randomized comparison of three adriamycin regimens for metastatic soft tissue sarcomas. <i>Journal of clinical oncology : official journal of the American Society of Clinical Oncology</i> . 1987;5(6):840-50. | C |
| Bramwell VH. Adjuvant chemotherapy for soft tissue sarcomas. <i>Cancer treatment and research</i> . 1989;44:93-102. | S |
| Bramwell VH, Mouridsen HT, Santoro A, Blackledge G, Somers R, Verweij J, et al. Cyclophosphamide versus ifosfamide: a randomized phase II trial in adult soft-tissue sarcomas. The European Organization for Research and Treatment of Cancer [EORTC], Soft Tissue and Bone Sarcoma Group. <i>Cancer chemotherapy and pharmacology</i> . 1993;31 Suppl 2:S180-4. | O |
| Bramwell VHC. Pazopanib and the treatment palette for soft-tissue sarcoma. <i>The Lancet</i> . 2012;379(9829):1854-6. | S |
| Bramwell VHC, Rouesse J, Santoro A. European experience of adjuvant chemotherapy for soft tissue sarcoma: Preliminary report of randomized trial of cyclophosphamide, vincristine, doxorubicin, and dacarbazine. <i>Cancer Treatment Symposia</i> . 1985;VOL. 3:99-107. | S |
| Breitfeld PP, Lyden E, Raney RB, Teot LA, Wharam M, Lobe T, et al. Ifosfamide and etoposide are superior to vincristine and melphalan for pediatric metastatic rhabdomyosarcoma when administered with irradiation and combination chemotherapy: a report from the Intergroup Rhabdomyosarcoma Study Group. <i>Journal of pediatric hematology/oncology</i> . 2001;23(4):225-33. | P |
| Cormier WJ, Hahn RG, Edmonson JH, Eagan RT. Phase II study in advanced sarcoma: randomized trial of pyrazofurin versus combination cyclophosphamide, doxorubicin, and cis-dichlorodiammineplatinum(II) (CAP). <i>Cancer treatment reports</i> . 1980;64(4-5):655-8. | P |
| Davis EJ, Chugh R, Zhao L, Lucas DR, Biermann JS, Zalupski MM, et al. A randomized, open-label, phase II study of neo/adjuvant doxorubicin and ifosfamide versus gemcitabine and docetaxel in patients with localised, high-risk, soft tissue sarcoma. <i>European journal of cancer</i> . 2015;51(13):1794-802. | P |
| Demetri GD, Von Mehren M, Jones RL, Hensley ML, Schuetze S, Staddon AP, et al. A randomized phase III study of trabectedin (T) or dacarbazine (D) for the treatment of patients (pts) with advanced liposarcoma (LPS) or leiomyosarcoma (LMS). <i>Journal of Clinical Oncology</i> . 2015;33(15). | S |

| | |
|--|---|
| Edmonson JH, Ryan LM, Falkson CI, Hicks DG, Blum RH. Phase II Study of Ifosfamide+Doxorubicin in Patients With Advanced Synovial Sarcomas (E1793): A Trial of the Eastern Cooperative Oncology Group. <i>Sarcoma</i> . 2003;7(1):9-11. | S |
| Garcia-Del-Muro X, Lopez-Pousa A, Maurel J, Martin J, Martinez-Trufero J, Casado A, et al. Randomized phase II study comparing gemcitabine plus dacarbazine versus dacarbazine alone in patients with previously treated soft tissue sarcoma: a Spanish Group for Research on Sarcomas study. <i>Journal of clinical oncology : official journal of the American Society of Clinical Oncology</i> . 2011;29(18):2528-33. | P |
| Gelderblom H, Blay J, Seddon BM, Leahy M, Ray-Coquard IL, De brauwer A, et al. Brostallicin versus doxorubicin as first-line chemotherapy in patients with advanced or metastatic soft tissue sarcoma: An EORTC Soft Tissue and Bone Sarcoma Group randomized phase II study. <i>Journal of Clinical Oncology</i> . 2010;28(15). | S |
| Glenn J, Sindelar WF, Kinsella T, Glatstein E, Tepper J, Costa J, et al. Results of multimodality therapy of resectable soft-tissue sarcomas of the retroperitoneum. <i>Surgery</i> . 1985;97(3):316-25. | S |
| Hensley ML, Patel SR, von Mehren M, Ganjoo K, Jones RL, Staddon A, et al. Efficacy and safety of trabectedin or dacarbazine in patients with advanced uterine leiomyosarcoma after failure of anthracycline-based chemotherapy: Subgroup analysis of a phase 3, randomized clinical trial. <i>Gynecologic oncology</i> . 2017. | S |
| Hudgens S. Evaluation of Quality of Life at Progression in Patients with Soft Tissue Sarcoma. <i>JMIR research protocols</i> . 2017;2017:2372135. | S |
| Jelic S, Babovic N, Kreacic M, Matkovic S, Milanovic N, Gavrilovic D, et al. Epirubicin 150 mg/m ² -cisplatin versus epirubicin 180 mg/m ² -cisplatin for advanced soft tissue sarcoma. <i>International journal of clinical pharmacology research</i> . 1999;19(4):129-38. | C |
| Karch A, Koch A, Grunwald V. A phase II trial comparing pazopanib with doxorubicin as first-line treatment in elderly patients with metastatic or advanced soft tissue sarcoma (EPAZ): study protocol for a randomized controlled trial. <i>Trials</i> . 2016;17(1):312. | S |
| Kataoka K, Tanaka K, Mizusawa J, Kimura A, Hiraga H, Kawai A, et al. A randomized phase II/III trial of perioperative chemotherapy with adriamycin plus ifosfamide versus gemcitabine plus docetaxel for high-grade soft tissue sarcoma: Japan Clinical Oncology Group Study JCOG1306. <i>Japanese journal of clinical oncology</i> . 2014;44(8):765-9. | P |
| Kawai A, Araki N, Hiraga H, Sugiura H, Matsumine A, Ozaki T, et al. A randomized, double-blind, placebo-controlled, Phase III study of pazopanib in patients with soft tissue sarcoma: results from the Japanese subgroup. <i>Japanese journal of clinical oncology</i> . 2016;46(3):248-53. | S |
| Kilic L, Ekenel M, Karabulut S, Agaoglu F, Darendeliler E. Neoadjuvant sequential chemoradiotherapy versus radiotherapy alone for treatment of high-risk extremity soft tissue sarcoma: a single-institution experience. <i>Contemporary oncology (Poznan, Poland)</i> . 2017;21(1):60-5. | S |
| Klug LR, Heinrich MC. PDGFRA Antibody for Soft Tissue Sarcoma. <i>Cell</i> . 2017;168(4):555. | S |
| Lien IC, Pollack SM. Treatment of refractory gastrointestinal stromal tumor using pazopanib. <i>Translational Gastroenterology and Hepatology</i> . 2016;2016(NOV). | S |

| | |
|---|---|
| Muss HB, Bundy B, DiSaia PJ, Homesley HD, Fowler WC, Jr., Creasman W, et al. Treatment of recurrent or advanced uterine sarcoma. A randomized trial of doxorubicin versus doxorubicin and cyclophosphamide (a phase III trial of the Gynecologic Oncology Group). <i>Cancer</i> . 1985;55(8):1648-53. | P |
| Northfelt DW, Martin FJ, Working P, Volberding PA, Russell J, Newman M, et al. Doxorubicin encapsulated in liposomes containing surface-bound polyethylene glycol: pharmacokinetics, tumor localization, and safety in patients with AIDS-related Kaposi's sarcoma. <i>Journal of clinical pharmacology</i> . 1996;36(1):55-63. | P |
| Omura GA, Blessing JA. Chemotherapy of stage III, IV and recurrent uterine sarcomas: a randomized trial of adriamycin (AD) versus AD+dimethyl triazeno imidazole carboxamide (DTIC). <i>Proceedings of the American Association for Cancer Research</i> . 1978;Vol. 19:No. 103. | S |
| Omura GA, Major FJ, Blessing JA, Sedlacek TV, Thigpen JT, Creasman WT, et al. A randomized study of adriamycin with and without dimethyl triazenoimidazole carboxamide in advanced uterine sarcomas. <i>Cancer</i> . 1983;52(4):626-32. | P |
| Palumbo R, Palmeri S, Antimi M, Gatti C, Raffo P, Villani G, et al. Phase II study of continuous-infusion high-dose ifosfamide in advanced and/or metastatic pretreated soft tissue sarcomas. <i>Annals of oncology : official journal of the European Society for Medical Oncology</i> . 1997;8(11):1159-62. | I |
| Patel V, Kontoudis I, Tremblay G. An indirect treatment comparison of eribulin versus trabectedin for the treatment of advanced soft tissue sarcoma. <i>Value in Health</i> . 2016;19(3):A140. | S |
| Paulussen M, Craft AW, Lewis I, Hackshaw A, Douglas C, Dunst J, et al. Results of the EICESS-92 Study: two randomized trials of Ewing's sarcoma treatment--cyclophosphamide compared with ifosfamide in standard-risk patients and assessment of benefit of etoposide added to standard treatment in high-risk patients. <i>Journal of clinical oncology : official journal of the American Society of Clinical Oncology</i> . 2008;26(27):4385-93. | P |
| Pautier P, Floquet A, Gladieff L, Berton-Rigaud D, Piperno-Neumann S, Selle F, et al. A randomized clinical trial of adjuvant chemotherapy with doxorubicin, ifosfamide, and cisplatin in localized uterine sarcomas: Results from 81 randomized patients. <i>Journal of Clinical Oncology</i> . 2011;29(15). | S |
| Pautier P, Floquet A, Gladieff L, Berton-Rigaud D, Piperno-Neumann S, Selle F, et al. A randomized clinical trial of adjuvant chemotherapy with doxorubicin, ifosfamide, and cisplatin in localized uterine sarcomas. Results on 81 patients. <i>International Journal of Gynecological Cancer</i> . 2011;21(12):S72. | S |
| Pautier P, Floquet A, Gladieff L, Berton-Rigaud D, Piperno-Neumann S, Selle F, et al. A randomized clinical trial of adjuvant chemotherapy with doxorubicin, ifosfamide, and cisplatin in localized uterine sarcomas. Results on 81 randomized patients. <i>European journal of cancer</i> . 2011;47:15. | S |
| Paz-Ares L, Lopez-Pousa A, Poveda A, Balana C, Ciruelos E, Bellmunt J, et al. Trabectedin in pre-treated patients with advanced or metastatic soft tissue sarcoma: a phase II study evaluating co-treatment with dexamethasone. <i>Investigational new drugs</i> . 2012;30(2):729-40. | I |

| | |
|---|---|
| Petrioli R, Coratti A, Correale P, D'Aniello C, Grimaldi L, Tanzini G, et al. Adjuvant epirubicin with or without Ifosfamide for adult soft-tissue sarcoma. American journal of clinical oncology. 2002;25(5):468-73. | P |
| Pinedo HM, Bramwell VH, Mouridsen HT, Somers R, Vendrik CP, Santoro A, et al. Cyvadic in advanced soft tissue sarcoma: a randomized study comparing two schedules. A study of the EORTC Soft Tissue and Bone Sarcoma Group. Cancer. 1984;53(9):1825-32. | C |
| Pinedo HM, Mouridsen HT, Somers R, Santor A, Mulder YH, Blanwell V, et al. A randomized trial comparing the effect of epirubicin and doxorubicin in soft tissue sarcoma. Clinical Trials Journal. 1987;24(SUPPL. 1):231-41. | O |
| Pratt CB, Maurer HM, Gieser P, Salzberg A, Rao BN, Parham D, et al. Treatment of unresectable or metastatic pediatric soft tissue sarcomas with surgery, irradiation, and chemotherapy: a Pediatric Oncology Group study. Medical and pediatric oncology. 1998;30(4):201-9. | P |
| Rosenberg SA. Prospective randomized trials demonstrating the efficacy of adjuvant chemotherapy in adult patients with soft tissue sarcomas. Cancer treatment reports. 1984;68(9):1067-78. | S |
| Rosenberg SA, Kent H, Costa J, Webber BL, Young R, Chabner B, et al. Prospective randomized evaluation of the role of limb-sparing surgery, radiation therapy, and adjuvant chemoimmunotherapy in the treatment of adult soft-tissue sarcomas. Surgery. 1978;84(1):62-9. | P |
| Schoenfeld DA, Rosenbaum C, Horton J, Wolter JM, Falkson G, DeConti RC. A comparison of adriamycin versus vincristine and adriamycin, and cyclophosphamide versus vincristine, actinomycin-D, and cyclophosphamide for advanced sarcoma. Cancer. 1982;50(12):2757-62. | P |
| Wexler LH, Andrich MP, Venzon D, Berg SL, Weaver-McClure L, Chen CC, et al. Randomized trial of the cardioprotective agent ICRF-187 in pediatric sarcoma patients treated with doxorubicin. Journal of clinical oncology : official journal of the American Society of Clinical Oncology. 1996;14(2):362-72. | P |
| Wilson RE, Wood WC, Lerner HL, Antman K, Amato D, Corson JM, et al. Doxorubicin chemotherapy in the treatment of soft-tissue sarcoma. Combined results of two randomized trials. Archives of surgery (Chicago, Ill : 1960). 1986;121(11):1354-9. | S |
| Worden. Erratum: Randomized phase II evaluation of 6 g/m2 of ifosfamide plus doxorubicin and granulocyte colony-stimulating factor (G-CSF) compared with 12 g/m2 of ifosfamide plus doxorubicin and G-CSF in the treatment of poor-prognosis soft tissue sarcoma (Journal of Clinical Oncology (2005) 23, (105-112)). Journal of Clinical Oncology. 2006;24(25):4223. | S |
| Worden FP, Taylor JM, Biermann JS, Sondak VK, Leu KM, Chugh R, et al. Randomized phase II evaluation of 6 g/m2 of ifosfamide plus doxorubicin and granulocyte colony-stimulating factor (G-CSF) compared with 12 g/m2 of ifosfamide plus doxorubicin and G-CSF in the treatment of poor-prognosis soft tissue sarcoma. Journal of clinical oncology : official journal of the American Society of Clinical Oncology. 2005;23(1):105-12. | C |

| Ausgeschlossene Volltexte Rechercheauftrag Systemtherapie-GIST | Ausschluss- grund |
|--|------------------------------|
| Eisenberg, B.L., et al., Phase II trial of neoadjuvant/adjuvant imatinib me- | C |

| | |
|--|--|
| sylate (IM) for advanced primary and metastatic/recurrent operable gastrointestinal stromal tumor (GIST): early results of RTOG 0132/ACRIN 6665. J Surg Oncol, 2009. 99(1): p. 42-7. | |
|--|--|

| Ausgeschlossene Volltexte Rechercheauftrag adjuvante Imatinibtherapie | Ausschlussgrund |
|---|------------------------|
| Blay, J. Y., et al. (2007). "Prospective multicentric randomized phase III study of imatinib in patients with advanced gastrointestinal stromal tumors comparing interruption versus continuation of treatment beyond 1 year: The French sarcoma group." Journal of Clinical Oncology 25(9): 1107-1113. | C |
| Casali, P. G., et al. (2015). "Time to definitive failure to the first tyrosine kinase inhibitor in localized GI stromal tumors treated with imatinib as an adjuvant: A European Organisation for Research and Treatment of Cancer Soft Tissue and Bone Sarcoma Group Intergroup Randomized Trial in collaboration with the Australasian Gastro-Intestinal Trials Group, UNICANCER, French Sarcoma Group, Italian Sarcoma Group, and Spanish Group for Research on Sarcomas." Journal of Clinical Oncology 33(36): 4276-4283. | C |
| Dasanu, C. A. (2012). "Length of adjuvant imatinib therapy in GIST: Weighing benefits, side effects and costs." Journal of Oncology Pharmacy Practice 18(3): 379-380. | S |
| Le Cesne, A., et al. (2010). "Discontinuation of imatinib in patients with advanced gastrointestinal stromal tumours after 3 years of treatment: An open-label multicentre randomised phase 3 trial." The Lancet Oncology 11(10): 942-949. | I |
| Patrikidou, A., et al. (2013). "Influence of imatinib interruption and rechallenge on the residual disease in patients with advanced GIST: Results of the BFR14 prospective french sarcoma group randomised, phase III trial." Annals of Oncology 24(4): 1087-1093. | P |

| Ausgeschlossene Volltexte Rechercheauftrag Chirurgie-Hyperthermie | Ausschlussgrund |
|--|------------------------|
| Issels RD, Schlemmer M. Current trials and new aspects in soft tissue sarcoma of adults. Cancer chemotherapy and pharmacology. 2002;49 Suppl 1:S4-8. | S |

| Ausgeschlossene Volltexte Rechercheauftrag Chirurgie-OP | Ausschlussgrund |
|---|------------------------|
| Abouarab MH, Salem IL, Degheidy MM, Henn D, Hirche C, Eweida A, et al. Therapeutic options and postoperative wound complications after extremity soft tissue sarcoma resection and postoperative external beam radiotherapy. International wound journal. 2017. | I |
| Akgul T, Sormaz IC, Aksoy M, Ucar A, Ozger H, Eralp L. Results and functional outcomes of en-bloc resection and vascular reconstruction in extremity musculoskeletal tumors. BMJ case reports. 2018;52(6):409-14. | P |
| Alamanda VK, Delisca GO, Archer KR, Song Y, Schwartz HS, Holt GE. Incomplete excisions of extremity soft tissue sarcomas are unaffected by insurance status or distance from a sarcoma center. Journal of surgical oncology. 2013;108(7):477-80. | C |
| Arbeit JM, Hilaris BS, Brennan MF. Wound complications in the multimo- | C |

| | |
|--|---|
| dality treatment of extremity and superficial truncal sarcomas. Journal of clinical oncology : official journal of the American Society of Clinical Oncology. 1987;5(3):480-8. | |
| Behranwala KA, Barry P, A'Hern R, Thomas JM. Buttock soft tissue sarcoma: clinical features, treatment, and prognosis. Annals of surgical oncology. 2003;10(8):961-71. | C |
| Bertoldo U, Brach del Prever EM, Gino G, Mellano D, Albertini U, Piana R, et al. The integration of vascular surgical techniques with oncological surgical protocols in the treatment of soft tissue sarcomas of the limbs. La Chirurgia degli organi di movimento. 2003;88(2):217-23. | O |
| Bramwell VH, Crowther D, Deakin DP, Swindell R, Harris M. Combined modality management of local and disseminated adult soft tissue sarcomas: a review of 257 cases seen over 10 years at the Christie Hospital & Holt Radium Institute, Manchester. British journal of cancer. 1985;51(3):301-18. | P |
| Choi ES, Han I, Cho HS, Kang HG, Kim JH, Kim HS. Distinct Clinical Characteristics of Unplanned Excision in Synovial Sarcoma. Clinics in orthopedic surgery. 2015;7(2):254-60. | C |
| Chrcanovic BR, Brennan PA, Rahimi S, Gomez RS. Ameloblastic fibroma and ameloblastic fibrosarcoma: A systematic review. Journal of oral pathology & medicine : official publication of the International Association of Oral Pathologists and the American Academy of Oral Pathology. 2017. | P |
| Clarkson PW, Griffin AM, Catton CN, O'Sullivan B, Ferguson PC, Wunder JS, et al. Epineural dissection is a safe technique that facilitates limb salvage surgery. Clinical orthopaedics and related research. 2005;438:92-6. | I |
| Davis LA, Dandachli F, Turcotte R, Steinmetz OK. Limb-sparing surgery with vascular reconstruction for malignant lower extremity soft tissue sarcoma. Journal of vascular surgery. 2017;65(1):151-6. | I |
| Dosluoglu H, Luna P, Herrera L. [Compartment resection or extended local excision of soft tissue sarcomas?]. Der Chirurg; Zeitschrift fur alle Gebiete der operativen Medizen. 1993;64(7):509-16. | S |
| Foroozan M, Sei JF, Amini M, Beauchet A, Saiag P. Efficacy of Mohs micrographic surgery for the treatment of dermatofibrosarcoma protuberans: systematic review. Archives of dermatology. 2012;148(9):1055-63. | S |
| Furtado S, Errington L, Godfrey A, Rochester L, Gerrand C. Objective clinical measurement of physical functioning after treatment for lower extremity sarcoma - A systematic review. European journal of surgical oncology : the journal of the European Society of Surgical Oncology and the British Association of Surgical Oncology. 2017;43(6):968-93. | I |
| Gerrand CH, Bell RS, Wunder JS, Kandel RA, O'Sullivan B, Catton CN, et al. The influence of anatomic location on outcome in patients with soft tissue sarcoma of the extremity. Cancer. 2003;97(2):485-92. | C |
| Hall KS, Eriksson M, Bruland Ø S, Engellau J, Trovik CS. Treatment of soft tissue sarcoma of the extremity and trunk wall the Scandinavian Sarcoma Group perspective. Acta Orthopaedica. 2009;80(SUPPL. 334):52-9. | I |
| Kane JM, 3rd, Kraybill WG. Radical operations for soft tissue sarcomas. Surgical oncology clinics of North America. 2005;14(3):633-48, viii. | S |
| Karakousis CP, Emrich LJ, Vesper DS. Soft-tissue sarcomas of the proximal lower extremity. Archives of surgery (Chicago, Ill : 1960). 1989;124(11):1297-300. | P |
| Karakousis CP, Kontzoglou K, Driscoll DL. Anterior compartment resection of the thigh in soft-tissue sarcomas. European journal of surgical oncology : the journal of the European Society of Surgical Oncology and the British Association of Surgical Oncology. 1998;24(4):308-12. | P |
| Keus RB, Rutgers EJ, Ho GH, Gortzak E, Albus-Lutter CE, Hart AA. Limb- | P |

| | |
|--|---|
| sparing therapy of extremity soft tissue sarcomas: treatment outcome and long-term functional results. <i>European journal of cancer (Oxford, England : 1990)</i> . 1994;30a(10):1459-63. | |
| Lehti PM, Moseley HS, Peetz ME, Fletcher WS. Liposarcoma of the leg. <i>American journal of surgery</i> . 1982;144(1):44-7. | P |
| Lin PP, Pino ED, Normand AN, Deavers MT, Cannon CP, Ballo MT, et al. Periosteal margin in soft-tissue sarcoma. <i>Cancer</i> . 2007;109(3):598-602. | P |
| Matsubara T, Kusuzaki K, Matsumine A, Nakamura T, Sudo A. Can a less radical surgery using photodynamic therapy with acridine orange be equal to a wide-margin resection? <i>Clinical orthopaedics and related research</i> . 2013;471(3):792-802. | I |
| Mentzel T, Beham A, Katenkamp D, Dei Tos AP, Fletcher CD. Fibrosarcomatous ("high-grade") dermatofibrosarcoma protuberans: clinicopathologic and immunohistochemical study of a series of 41 cases with emphasis on prognostic significance. <i>The American journal of surgical pathology</i> . 1998;22(5):576-87. | C |
| Mingoli A, Cavallaro A, Sapienza P, Di Marzo L, Feldhaus RJ, Cavallari N. International registry of inferior vena cava leiomyosarcoma: analysis of a world series on 218 patients. <i>Anticancer research</i> . 1996;16(5b):3201-5. | P |
| Ogura K, Beppu Y, Chuman H, Yoshida A, Yamamoto N, Sumi M, et al. Alveolar soft part sarcoma: a single-center 26-patient case series and review of the literature. <i>Sarcoma</i> . 2012;2012:907179. | P |
| Owens JC, Shiu MH, Smith R, Hajdu SI. Soft tissue sarcomas of the hand and foot. <i>Cancer</i> . 1985;55(9):2010-8. | P |
| Ozger H, Alpan B. Management of primary malignant bone and soft tissue tumors of foot and ankle: Is it worth salvaging? 2018;117(2):307-20. | P |
| Pisters PW, Harrison LB, Leung DH, Woodruff JM, Casper ES, Brennan MF. Long-term results of a prospective randomized trial of adjuvant brachytherapy in soft tissue sarcoma. <i>Journal of clinical oncology : official journal of the American Society of Clinical Oncology</i> . 1996;14(3):859-68. | C |
| Pisters PW, Harrison LB, Woodruff JM, Gaynor JJ, Brennan MF. A prospective randomized trial of adjuvant brachytherapy in the management of low-grade soft tissue sarcomas of the extremity and superficial trunk. <i>Journal of clinical oncology : official journal of the American Society of Clinical Oncology</i> . 1994;12(6):1150-5. | C |
| Potter DA, Kinsella T, Glatstein E, Wesley R, White DE, Seipp CA, et al. High-grade soft tissue sarcomas of the extremities. <i>Cancer</i> . 1986;58(1):190-205. | P |
| Rajeev R, Patel M, Jayakrishnan TT, Johnston FM, Bedi M, Charlson J, et al. Retroperitoneal solitary fibrous tumor: surgery as first line therapy. <i>Clinical sarcoma research</i> . 2015;5:19. | P |
| Reece GP, Schusterman MA, Pollock RE, Kroll SS, Miller MJ, Baldwin BJ, et al. Immediate versus delayed free-tissue transfer salvage of the lower extremity in soft tissue sarcoma patients. <i>Annals of surgical oncology</i> . 1994;1(1):11-7. | I |
| Rekhi B, Deshmukh M, Jambhekar NA. Low-grade fibromyxoid sarcoma: a clinicopathologic study of 18 cases, including histopathologic relationship with sclerosing epithelioid fibrosarcoma in a subset of cases. <i>Annals of diagnostic pathology</i> . 2011;15(5):303-11. | I |
| Rosenberg SA, Kent H, Costa J, Webber BL, Young R, Chabner B, et al. Prospective randomized evaluation of the role of limb-sparing surgery, radiation therapy, and adjuvant chemoimmunotherapy in the treatment of adult soft-tissue sarcomas. <i>Surgery</i> . 1978;84(1):62-9. | I |
| Rosenberg SA, Tepper J, Glatstein E, Costa J, Baker A, Brennan M, et al. The treatment of soft-tissue sarcomas of the extremities: prospective ran- | C |

| | |
|---|---|
| domized evaluations of (1) limb-sparing surgery plus radiation therapy compared with amputation and (2) the role of adjuvant chemotherapy. <i>Annals of surgery</i> . 1982;196(3):305-15. | |
| Rudiger HA, Beltrami G, Campanacci DA, Mela MM, Franchi A, Capanna R. Soft tissue sarcomas of the popliteal fossa: outcome and risk factors. <i>European journal of surgical oncology : the journal of the European Society of Surgical Oncology and the British Association of Surgical Oncology</i> . 2007;33(4):512-7. | P |
| Saddegh MK, Bauer HC. Wound complication in surgery of soft tissue sarcoma. Analysis of 103 consecutive patients managed without adjuvant therapy. <i>Clinical orthopaedics and related research</i> . 1993(289):247-53. | C |
| Shiu MH, Collin C, Hilaris BS, Nori D, Manolatos S, Anderson LL, et al. Limb preservation and tumor control in the treatment of popliteal and antecubital soft tissue sarcomas. <i>Cancer</i> . 1986;57(8):1632-9. | P |
| Simon MA, Enneking WF. The management of soft-tissue sarcomas of the extremities. <i>The Journal of bone and joint surgery American volume</i> . 1976;58(3):317-27. | P |
| Temple HT, Worman DS, Mnaymneh WA. Unplanned surgical excision of tumors of the foot and ankle. <i>Cancer control : journal of the Moffitt Cancer Center</i> . 2001;8(3):262-8. | I |
| Thacker MM, Potter BK, Pitcher JD, Temple HT. Soft tissue sarcomas of the foot and ankle: impact of unplanned excision, limb salvage, and multimodality therapy. <i>Foot & ankle international</i> . 2008;29(7):690-8. | I |
| Tsukushi S, Nishida Y, Wasa J, Urakawa H, Ishiguro N. Clinicopathological assessment of T1 soft tissue sarcomas. <i>Archives of orthopaedic and trauma surgery</i> . 2011;131(5):695-9. | C |
| Tsumori T, Nakao K, Miyata M, Hashimoto T, Nakahara K, Kim M, et al. Surgical clinicopathologic study of malignant fibrous histiocytoma. <i>The Japanese journal of surgery</i> . 1986;16(3):202-8. | C |
| Yonemoto T, Tatzaki S, Ishii T. Knee rotation-plasty for malignant musculoskeletal tumors occurring around the knee joint. <i>Anticancer research</i> . 2001;21(1b):717-22. | P |
| Zahlten-Hinguranage A, Bernd L, Ewerbeck V, Sabo D. Equal quality of life after limb-sparing or ablative surgery for lower extremity sarcomas. <i>British journal of cancer</i> . 2004;91(6):1012-4. | O |

| Ausgeschlossene Volltexte Rechercheauftrag Chirurgie-Resektionsränder | Ausschlussgrund |
|--|------------------------|
| Ahmad R, Jacobson A, Hornicek F, Haynes AB, Choy E, Cote G, et al. The Width of the Surgical Margin Does Not Influence Outcomes in Extremity and Truncal Soft Tissue Sarcoma Treated With Radiotherapy. <i>The oncologist</i> . 2016;21(10):1269-76. | I |
| Alho A, Alvegard TA, Berlin O, Ranstam J, Rydholm A, Rooser B, et al. Surgical margin in soft tissue sarcoma. The Scandinavian Sarcoma Group experience. <i>Acta orthopaedica Scandinavica</i> . 1989;60(6):687-92. | I |
| Atean I, Pointreau Y, Rosset P, Garaud P, De-Pinieux G, Calais G. Prognostic factors of extremity soft tissue sarcoma in adults. A single institutional analysis. <i>Cancer radiotherapie : journal de la Societe francaise de radiotherapie oncologique</i> . 2012;16(8):661-6. | I |
| Atila K, Arslan NC, Derici S, Canda AE, Sagol O, Oztop I, et al. Neutrophil-to-lymphocyte ratio: could it be used in the clinic as prognostic marker for gastrointestinal stromal tumor? <i>Hepato-gastroenterology</i> . 2014;61(134):1649-53. | S |
| Austin JL, Temple WJ, Puloski S, Schachar NS, Oddone Paolucci E, Ku- | P |

| | |
|---|---|
| rien E, et al. Outcomes of surgical treatment alone in patients with superficial soft tissue sarcoma regardless of size or grade. <i>Journal of surgical oncology</i> . 2016;113(1):108-13. | |
| Avizonis VN, Sause WT, Menlove RL. Utility of surgical margins in the radiotherapeutic management of soft tissue sarcomas. <i>Journal of surgical oncology</i> . 1990;45(2):85-90. | I |
| Bagaria SP, Neville M, Gray RJ, Gabriel E, Ashman JB, Attia S, et al. The Volume-Outcome Relationship in Retroperitoneal Soft Tissue Sarcoma: Evidence of Improved Short- and Long-Term Outcomes at High-Volume Institutions. <i>Sarcoma</i> . 2018;2018. | O |
| Bai H, Yang J, Cao D, Huang H, Xiang Y, Wu M, et al. Ovary and uterus-sparing procedures for low-grade endometrial stromal sarcoma: a retrospective study of 153 cases. <i>Gynecologic oncology</i> . 2014;132(3):654-60. | I |
| Behranwala KA, A'Hern R, Thomas JM. Primary malignant tumors of the iliopsoas compartment. <i>Journal of surgical oncology</i> . 2004;86(2):78-83. | I |
| Behranwala KA, Clark MA, Thomas JM. Soft-tissue tumours of the perineum. <i>European journal of surgical oncology : the journal of the European Society of Surgical Oncology and the British Association of Surgical Oncology</i> . 2002;28(4):437-42. | P |
| Belal A, Kandil A, Allam A, Khafaga Y, El-Husseiny G, El-Enbaby A, et al. Malignant fibrous histiocytoma: a retrospective study of 109 cases. <i>American journal of clinical oncology</i> . 2002;25(1):16-22. | I |
| Bell RS, O'Sullivan B, Liu FF, Powell J, Langer F, Fornasier VL, et al. The surgical margin in soft-tissue sarcoma. <i>The Journal of bone and joint surgery American volume</i> . 1989;71(3):370-5. | I |
| Beltrami G, Rudiger HA, Mela MM, Scoccianti G, Livi L, Franchi A, et al. Limb salvage surgery in combination with brachytherapy and external beam radiation for high-grade soft tissue sarcomas. <i>European journal of surgical oncology : the journal of the European Society of Surgical Oncology and the British Association of Surgical Oncology</i> . 2008;34(7):811-6. | I |
| Ben-Josef E, Chuba P, Fontanesi J, Ryan JR, Zalupski M, Lucas DR, et al. Brachytherapy boost may improve outcome of radiotherapy in soft-tissue sarcoma of the extremities. <i>Journal of Brachytherapy International</i> . 1999;15(2):73-84. | I |
| Bernthal NM, Putnam A, Jones KB, Viskochil D, Randall RL. The effect of surgical margins on outcomes for low grade MPNSTs and atypical neurofibroma. <i>Journal of surgical oncology</i> . 2014;110(7):813-6. | P |
| Beroukas E, Peponi E, Soulimioti G, Kalaitzi Z, Potamianou A, Skarlatos I, et al. Intraoperative electron beam radiotherapy followed by moderate doses of external beam radiotherapy in the treatment of resected soft tissue sarcomas of the extremities. <i>Journal of BUON : official journal of the Balkan Union of Oncology</i> . 2004;9(4):391-8. | I |
| Bevilacqua RG, Rogatko A, Hajdu SI, Brennan MF. Prognostic factors in primary retroperitoneal soft-tissue sarcomas. <i>Archives of surgery (Chicago, Ill : 1960)</i> . 1991;126(3):328-34. | S |
| Biau DJ, Ferguson PC, Chung P, Griffin AM, Catton CN, O'Sullivan B, et al. Local recurrence of localized soft tissue sarcoma: a new look at old predictors. <i>Cancer</i> . 2012;118(23):5867-77. | I |
| Bishop AJ, Zagars GK, Moon BS, Lin PP, Lewis VO, Guadagnolo BA. Combined Limb-Sparing Surgery and Radiation Therapy to Treat Sarcomas of the Hands and Feet: Long-Term Cancer Outcomes and Morbidity. <i>International journal of radiation oncology, biology, physics</i> . 2015;92(5):1060-8. | I |
| Bolling T, Schuller P, Distelmaier B, Schuck A, Ernst I, Gosheger G, et al. Perioperative high-dose rate brachytherapy using a bendy applicator | P |

| | |
|---|---|
| (flap): treatment results of 74 patients. Anticancer research. 2008;28(6b):3885-90. | |
| Bolton JS, Vauthey JN, Farr GH, Jr., Sauter EI, Bowen JC, 3rd, Kline DG. Is limb-sparing surgery applicable to neurogenic sarcomas of the extremities? Archives of surgery (Chicago, Ill : 1960). 1989;124(1):118-21. | S |
| Bonvalot S, Levy A, Terrier P, Tzanis D, Bellefqih S, Le Cesne A, et al. Primary Extremity Soft Tissue Sarcomas: Does Local Control Impact Survival? Annals of surgical oncology. 2017;24(1):194-201. | S |
| Brodak M, Spacek J, Pacovsky J, Krepinska E. Multidisciplinary approach as the optimum for surgical treatment of retroperitoneal sarcomas in women. European journal of gynaecological oncology. 2013;34(3):234-7. | I |
| Broecker JS, Ethun CG, Monson DK, Lopez-Aguilar AG, Le N, McInnis M, et al. The Oncologic Impact of Postoperative Complications Following Resection of Truncal and Extremity Soft Tissue Sarcomas. Annals of surgical oncology. 2017;24(12):3574-86. | S |
| Calvo FA, Sole CV, Cambeiro M, Montero A, Polo A, Gonzalez C, et al. Prognostic value of external beam radiation therapy in patients treated with surgical resection and intraoperative electron beam radiation therapy for locally recurrent soft tissue sarcoma: a multicentric long-term outcome analysis. International journal of radiation oncology, biology, physics. 2014;88(1):143-50. | S |
| Cananzi FC, Lorenzi B, Belgaumkar A, Benson C, Judson I, Mudan S. Prognostic factors for primary gastrointestinal stromal tumours: are they the same in the multidisciplinary treatment era? Langenbeck's archives of surgery. 2014;399(3):323-32. | I |
| Cannon RB, Carpenter PS, Boothe D, Buchmann LO, Hunt JP, Lloyd S, et al. Academic Facility Utilization and Survival Outcomes in Adult Head and Neck Sarcomas: An NCDDB Analysis. Otolaryngology--head and neck surgery : official journal of American Academy of Otolaryngology-Head and Neck Surgery. 2018;159(3):473-83. | P |
| Chang HR, Gaynor J, Tan C, Hajdu SI, Brennan MF. Multifactorial analysis of survival in primary extremity liposarcoma. World journal of surgery. 1990;14(5):610-8. | S |
| Chen CQ, Yin L, Peng CH, Cai Y, Li YF, Zhao R, et al. Prognostic factors of retroperitoneal soft tissue sarcomas: analysis of 132 cases. Chinese medical journal. 2007;120(12):1047-50. | S |
| Chen KH, Chou TM, Shieh SJ. Management of extremity malignant fibrous histiocytoma: A 10-year experience. Formosan Journal of Surgery. 2015;48(1):1-9. | I |
| Chen TW, Liu HD, Shyu RY, Yu JC, Shih ML, Chang TM, et al. Giant malignant gastrointestinal stromal tumors: recurrence and effects of treatment with STI-571. World journal of gastroenterology. 2005;11(2):260-3. | I |
| Chi M, Dudek AZ, Wind KP. Primary hepatic leiomyosarcoma in adults: analysis of prognostic factors. Onkologie. 2012;35(4):210-4. | S |
| Cho SY, Moon KC, Cheong MS, Kwak C, Kim HH, Ku JH. Localized resectable genitourinary sarcoma in adult Korean patients: experiences at a single center. Yonsei medical journal. 2011;52(5):761-7. | S |
| Choi JH, Ahn KC, Chang H, Minn KW, Jin US, Kim BJ. Surgical Treatment and Prognosis of Angiosarcoma of the Scalp: A Retrospective Analysis of 14 Patients in a Single Institution. BioMed research international. 2015;2015:321896. | S |
| Choong PFM, Pritchard DJ, Sim FH, Rock MG, Nascimento AG. Long-term survival in high grade soft tissue sarcoma: Prognostic factors in synovial sarcoma. International journal of oncology. 1995;7(1):161-9. | I |
| Chou YS, Liu CY, Chang YH, King KL, Chen PC, Pan CC, et al. Prognos- | I |

| | |
|---|---|
| tic factors of primary resected retroperitoneal soft tissue sarcoma: Analysis from a single asian tertiary center and external validation of gronchi's nomogram. <i>Journal of surgical oncology</i> . 2016;113(4):355-60. | |
| Chou YS, Liu CY, Chen WM, Chen TH, Chen PC, Wu HT, et al. Follow-up after primary treatment of soft tissue sarcoma of extremities: impact of frequency of follow-up imaging on disease-specific survival. <i>Journal of surgical oncology</i> . 2012;106(2):155-61. | S |
| Chung PW, Deheshi BM, Ferguson PC, Wunder JS, Griffin AM, Catton CN, et al. Radiosensitivity translates into excellent local control in extremity myxoid liposarcoma: a comparison with other soft tissue sarcomas. <i>Cancer</i> . 2009;115(14):3254-61. | I |
| Collin C, Hadju SI, Godbold J, Shiu MH, Hilaris BI, Brennan MF. Localized, operable soft tissue sarcoma of the lower extremity. <i>Archives of surgery (Chicago, Ill : 1960)</i> . 1986;121(12):1425-33. | I |
| Collin C, Hajdu SI, Godbold J, Friedrich C, Brennan MF. Localized operable soft tissue sarcoma of the upper extremity. Presentation, management, and factors affecting local recurrence in 108 patients. <i>Annals of surgery</i> . 1987;205(4):331-9. | S |
| Connelly JH, Evans HL. Dermatofibrosarcoma protuberans. A clinicopathologic review with emphasis on fibrosarcomatous areas. <i>The American journal of surgical pathology</i> . 1992;16(10):921-5. | O |
| Cosper PF, Olsen J, DeWees T, Van Tine BA, Hawkins W, Michalski J, et al. Intensity modulated radiation therapy and surgery for Management of Retroperitoneal Sarcomas: a single-institution experience. <i>Radiation oncology (London, England)</i> . 2017;12(1):198. | I |
| de Bree R, van der Valk P, Kuik DJ, van Diest PJ, Doornaert P, Buter J, et al. Prognostic factors in adult soft tissue sarcomas of the head and neck: a single-centre experience. <i>Oral oncology</i> . 2006;42(7):703-9. | S |
| Deroose JP, Burger JW, van Geel AN, den Bakker MA, de Jong JS, Eggermont AM, et al. Radiotherapy for soft tissue sarcomas after isolated limb perfusion and surgical resection: essential for local control in all patients? <i>Annals of surgical oncology</i> . 2011;18(2):321-7. | S |
| Dewan V, Darbyshire A, Sumathi V, Jeys L, Grimer R. Prognostic and survival factors in myxofibrosarcomas. <i>Sarcoma</i> . 2012;2012:830879. | S |
| Dickinson IC, Whitwell DJ, Battistuta D, Thompson B, Strobel N, Duggal A, et al. Surgical margin and its influence on survival in soft tissue sarcoma. <i>ANZ journal of surgery</i> . 2006;76(3):104-9. | S |
| Doepker MP, Hanna KH, Thompson ZJ, Binitie OT, Letson DG, Gonzalez RJ. Recurrence and survival analysis of resected soft tissue sarcomas of pelvic retroperitoneal structures. <i>Journal of surgical oncology</i> . 2016;113(1):103-7. | S |
| Dozois EJ, Jacofsky DJ, Billings BJ, Privitera A, Cima RR, Rose PS, et al. Surgical approach and oncologic outcomes following multidisciplinary management of retrorectal sarcomas. <i>Annals of surgical oncology</i> . 2011;18(4):983-8. | P |
| Enneking WF, Spanier SS, Malawer MM. The effect of the Anatomic setting on the results of surgical procedures for soft parts sarcoma of the thigh. <i>Cancer</i> . 1981;47(5):1005-22. | S |
| Farhood AI, Hajdu SI, Shiu MH, Strong EW. Soft tissue sarcomas of the head and neck in adults. <i>American journal of surgery</i> . 1990;160(4):365-9. | S |
| Feng M, Murphy J, Griffith KA, Baker LH, Sondak VK, Lucas DR, et al. Long-term outcomes after radiotherapy for retroperitoneal and deep truncal sarcoma. <i>International journal of radiation oncology, biology, physics</i> . 2007;69(1):103-10. | S |
| Fujimoto N, Kubo T, Hisaoka M, Udo K, Yokomizo A, Shibuya T, et al. | P |

| | |
|--|---|
| Demographics, management and treatment outcomes of benign and malignant retroperitoneal tumors in Japan. <i>International Journal of Urology</i> . 2018;25(1):61-7. | |
| Fury MG, Antonescu CR, Van Zee KJ, Brennan MF, Maki RG. A 14-year retrospective review of angiosarcoma: clinical characteristics, prognostic factors, and treatment outcomes with surgery and chemotherapy. <i>Cancer journal (Sudbury, Mass)</i> . 2005;11(3):241-7. | S |
| Gayner SM, Lewis JE, McCaffrey TV. Effect of resection margins on dermatofibrosarcoma protuberans of the head and neck. <i>Archives of otolaryngology--head & neck surgery</i> . 1997;123(4):430-3. | I |
| Ghanim B, Hess S, Bertoglio P, Celik A, Bas A, Oberndorfer F, et al. In-trathoracic solitary fibrous tumor - an international multicenter study on clinical outcome and novel circulating biomarkers. <i>Scientific reports</i> . 2017;7(1):12557. | P |
| Gold JS, Antonescu CR, Hajdu C, Ferrone CR, Hussain M, Lewis JJ, et al. Clinicopathologic correlates of solitary fibrous tumors. <i>Cancer</i> . 2002;94(4):1057-68. | S |
| Gonzalez-Gonzalez R, Bologna-Molina R, Molina-Frechero N, Dominguez-Malagon HR. Prognostic factors and treatment strategies for adult head and neck soft tissue sarcoma. <i>International journal of oral and maxillofacial surgery</i> . 2012;41(5):569-75. | I |
| Gouveia AM, Pimenta AP, Capelinha AF, de la Cruz D, Silva P, Lopes JM. Surgical margin status and prognosis of gastrointestinal stromal tumor. <i>World journal of surgery</i> . 2008;32(11):2375-82. | S |
| Grabellus F, Kraft C, Sheu SY, Ebeling P, Bauer S, Lendemans S, et al. Evaluation of 47 soft tissue sarcoma resection specimens after isolated limb perfusion with TNF-alpha and melphalan: histologically characterized improved margins correlate with absence of recurrences. <i>Annals of surgical oncology</i> . 2009;16(3):676-86. | I |
| Gronchi A, Lo Vullo S, Colombo C, Collini P, Stacchiotti S, Mariani L, et al. Extremity soft tissue sarcoma in a series of patients treated at a single institution: local control directly impacts survival. <i>Annals of surgery</i> . 2010;251(3):506-11. | I |
| Guillou L, Benhattar J, Bonichon F, Gallagher G, Terrier P, Stauffer E, et al. Histologic grade, but not SYT-SSX fusion type, is an important prognostic factor in patients with synovial sarcoma: a multicenter, retrospective analysis. <i>Journal of clinical oncology : official journal of the American Society of Clinical Oncology</i> . 2004;22(20):4040-50. | I |
| Gundle KR, Gupta S, Kafchinski L, Griffin AM, Kandel RA, Dickson BC, et al. An Analysis of Tumor- and Surgery-Related Factors that Contribute to Inadvertent Positive Margins Following Soft Tissue Sarcoma Resection. <i>Annals of surgical oncology</i> . 2017;24(8):2137-44. | C |
| Hanasilo CE, Casadei MS, Auletta L, Amstalden EM, Matte SR, Etchebehere M. Comparative study of planned and unplanned excisions for the treatment of soft tissue sarcoma of the extremities. <i>Clinics (Sao Paulo, Brazil)</i> . 2014;69(9):579-84. | S |
| Harati K, Daigeler A, Lange K, Niggemann H, Stricker I, Steinau HU, et al. Somatic Leiomyosarcoma of the Soft Tissues: A Single-Institutional Analysis of Factors Predictive of Survival in 164 Patients. <i>World journal of surgery</i> . 2017;41(6):1534-41. | I |
| Harati K, Goertz O, Pieper A, Daigeler A, Joneidi-Jafari H, Niggemann H, et al. Soft Tissue Sarcomas of the Extremities: Surgical Margins Can Be Close as Long as the Resected Tumor Has No Ink on It. <i>The oncologist</i> . 2017;22(11):1400-10. | I |
| Harati K, Kirchhoff P, Behr B, Daigeler A, Goertz O, Hirsch T, et al. Soft | P |

| | |
|--|---|
| tissue sarcomas of the distal lower extremities: A single-institutional analysis of the prognostic significance of surgical margins in 120 patients. <i>Oncology reports</i> . 2016;36(2):863-70. | |
| Harati K, Kolbensschlag J, Bohm J, Niggemann H, Joneidi-Jafari H, Stricker I, et al. Long-term outcomes of patients with soft tissue sarcoma of the chest wall: Analysis of the prognostic significance of microscopic margins. <i>Oncology letters</i> . 2018;15(2):2179-87. | I |
| Harati K, Kolbensschlag J, Bohm J, Niggemann H, Joneidi-Jafari H, Stricker I, et al. Long-term outcomes of patients with soft tissue sarcoma of the chest wall: Analysis of the prognostic significance of microscopic margins. <i>Oncology letters</i> . 2018;15(2):2179-87. | S |
| Harati K, Lange K, Goertz O, Lahmer A, Kapalschinski N, Stricker I, et al. A single-institutional review of 68 patients with dermatofibrosarcoma protuberans: wide re-excision after inadequate previous surgery results in a high rate of local control. <i>World journal of surgical oncology</i> . 2017;15(1):5. | S |
| Herbert SH, Corn BW, Solin LJ, Lanciano RM, Schultz DJ, McKenna WG, et al. Limb-preserving treatment for soft tissue sarcomas of the extremities. The significance of surgical margins. <i>Cancer</i> . 1993;72(4):1230-8. | I |
| Hines OJ, Nelson S, Quinones-Baldrich WJ, Eilber FR. Leiomyosarcoma of the inferior vena cava: prognosis and comparison with leiomyosarcoma of other anatomic sites. <i>Cancer</i> . 1999;85(5):1077-83. | I |
| Huang H, Li D, Wang X, Wu Y, Liu S, Xu Z. Treatment outcomes of malignant fibrous histiocytoma of the maxillary sinus. <i>Journal of cancer research and therapeutics</i> . 2017;13(4):660-3. | S |
| Izumi K, Mizokami A, Sugimoto K, Narimoto K, Miyagi T, Maeda Y, et al. Role of surgical resection in adult urological soft tissue sarcoma: 25-year experience. <i>Urologia internationalis</i> . 2010;84(3):309-14. | P |
| Kainhofer V, Smolle MA, Szkandera J, Liegl-Atzwanger B, Maurer-Ertl W, Gerger A, et al. The width of resection margins influences local recurrence in soft tissue sarcoma patients. <i>European journal of surgical oncology : the journal of the European Society of Surgical Oncology and the British Association of Surgical Oncology</i> . 2016;42(6):899-906. | I |
| Kamiński A, Kołosza Z, Strojek J, Pilecki B. Value of combined treatment of retroperitoneal sarcomas. <i>Polski Przegląd Chirurgiczny</i> . 2007;79(4):534-47. | S |
| Karakousis CP, Emrich LJ, Rao U, Khalil M. Selective combination of modalities in soft tissue sarcomas: limb salvage and survival. <i>Seminars in surgical oncology</i> . 1988;4(1):78-81. | S |
| Karakousis CP, Zografos GC. Radiation therapy for high grade soft tissue sarcomas of the extremities treated with limb-preserving surgery. <i>European journal of surgical oncology : the journal of the European Society of Surgical Oncology and the British Association of Surgical Oncology</i> . 2002;28(4):431-6. | S |
| Kawai A, Hosono A, Nakayama R, Matsumine A, Matsumoto S, Ueda T, et al. Clear cell sarcoma of tendons and aponeuroses: a study of 75 patients. <i>Cancer</i> . 2007;109(1):109-16. | S |
| Kiatisevi P, Asavamongkolkul A, Phimolsarnti R, Waikakul S, Benjarassamerote S. The outcomes and prognostic factors of patients with soft-tissue sarcoma. <i>Journal of the Medical Association of Thailand = Chotmaihet thangphaet</i> . 2006;89(3):334-42. | P |
| Kikuta K, Nakayama R, Yoshida A, Sasaki A, Kameyama K, Chuman H, et al. A histological positive margin after surgery is correlated with high local re-recurrence rate in patients with recurrent myxofibrosarcoma. <i>Japanese journal of clinical oncology</i> . 2017;47(4):334-41. | P |
| Kim B, Chen YL, Kirsch DG, Goldberg SI, Kobayashi W, Kung JH, et al. | S |

| | |
|---|---|
| An effective preoperative three-dimensional radiotherapy target volume for extremity soft tissue sarcoma and the effect of margin width on local control. <i>International journal of radiation oncology, biology, physics.</i> 2010;77(3):843-50. | |
| Kim HJ, Cho YJ, Kim SH, Rha SY, Ahn JB, Yang WI, et al. Leiomyosarcoma: investigation of prognostic factors for risk-stratification model. <i>International journal of clinical oncology.</i> 2015;20(6):1226-32. | I |
| Kim M, Huh CH, Cho KH, Cho S. A study on the prognostic value of clinical and surgical features of dermatofibrosarcoma protuberans in Korean patients. <i>Journal of the European Academy of Dermatology and Venereology : JEADV.</i> 2012;26(8):964-71. | P |
| Kim MS, Cho WH, Song WS, Lee SY, Jeon DG. Prognostic significance of ezrin expression in pleomorphic malignant fibrous histiocytoma. <i>Anticancer research.</i> 2007;27(2):1171-8. | P |
| Kim MY, Park YS, Choi KD, Lee JH, Choi KS, Kim DH, et al. Predictors of recurrence after resection of small gastric gastrointestinal stromal tumors of 5 cm or less. <i>Journal of clinical gastroenterology.</i> 2012;46(2):130-7. | S |
| Kim YB, Shin KH, Seong J, Roh JK, Kim GE, Hahn SB, et al. Clinical significance of margin status in postoperative radiotherapy for extremity and truncal soft-tissue sarcoma. <i>International journal of radiation oncology, biology, physics.</i> 2008;70(1):139-44. | I |
| King DM, Hackbarth DA, Kirkpatrick A. Extremity soft tissue sarcoma resections: how wide do you need to be? <i>Clinical orthopaedics and related research.</i> 2012;470(3):692-9. | P |
| Knebel C, Lenze U, Pohlig F, Lenze F, Harrasser N, Suren C, et al. Prognostic factors and outcome of Liposarcoma patients: a retrospective evaluation over 15 years. <i>BMC cancer.</i> 2017;17(1):410. | I |
| Konofaos P, Spartalis E, Moris D, Athanasiou A, Dimitroulis D, Markakis C, et al. Challenges in the Surgical Treatment of Retroperitoneal Sarcomas. <i>The Indian journal of surgery.</i> 2016;78(1):1-5. | I |
| Kooby DA, Antonescu CR, Brennan MF, Singer S. Atypical lipomatous tumor/well-differentiated liposarcoma of the extremity and trunk wall: importance of histological subtype with treatment recommendations. <i>Annals of surgical oncology.</i> 2004;11(1):78-84. | P |
| Kraus DH, Dubner S, Harrison LB, Strong EW, Hajdu SI, Kher U, et al. Prognostic factors for recurrence and survival in head and neck soft tissue sarcomas. <i>Cancer.</i> 1994;74(2):697-702. | I |
| Lajer CB, Daugaard S, Hansen HS, Kirkegaard J, Holmgaard S, Christensen ME. Soft tissue sarcomas of the head and neck: a single-centre experience. <i>Clinical otolaryngology : official journal of ENT-UK ; official journal of Netherlands Society for Oto-Rhino-Laryngology & Cervico-Facial Surgery.</i> 2005;30(2):176-82. | I |
| Lawrence W, Jr., Donegan WL, Natarajan N, Mettlin C, Beart R, Winchester D. Adult soft tissue sarcomas. A pattern of care survey of the American College of Surgeons. <i>Annals of surgery.</i> 1987;205(4):349-59. | I |
| Le QT, Fu KK, Kroll S, Fitts L, Massullo V, Ferrell L, et al. Prognostic factors in adult soft-tissue sarcomas of the head and neck. <i>International journal of radiation oncology, biology, physics.</i> 1997;37(5):975-84. | I |
| Le Vay J, O'Sullivan B, Catton C, Cummings B, Fornasier V, Gullane P, et al. An assessment of prognostic factors in soft-tissue sarcoma of the head and neck. <i>Archives of otolaryngology--head & neck surgery.</i> 1994;120(9):981-6. | I |
| Lee BL, Chen CF, Chen PC, Lee HC, Liao WC, Perng CK, et al. Investigation of Prognostic Features in Primary Cutaneous and Soft Tissue Angiosarcoma After Surgical Resection: A Retrospective Study. <i>Annals of plas-</i> | I |

| | |
|--|---|
| tic surgery. 2017;78(3 Suppl 2):S41-s6. | |
| Lehnhardt M, Bohm J, Hirsch T, Behr B, Daigeler A, Harati K. [Radiation-induced angiosarcoma of the breast]. Handchirurgie, Mikrochirurgie, plastische Chirurgie : Organ der Deutschsprachigen Arbeitsgemeinschaft für Handchirurgie : Organ der Deutschsprachigen Arbeitsgemeinschaft für Mikrochirurgie der Peripheren Nerven und Gefässe 2017;49(2):103-10. | P |
| Lemeur M, Mattei JC, Souteyrand P, Chagnaud C, Curvale G, Rochwerger A. Prognostic factors for the recurrence of myxoid liposarcoma: 20 cases with up to 8 years follow-up. Orthopaedics & traumatology, surgery & research : OTSR. 2015;101(1):103-7. | S |
| LeVay J, O'Sullivan B, Catton C, Bell R, Fornasier V, Cummings B, et al. Outcome and prognostic factors in soft tissue sarcoma in the adult. International journal of radiation oncology, biology, physics. 1993;27(5):1091-9. | S |
| Levy A, Bonvalot S, Bellefqih S, Terrier P, Le Cesne A, Le Pechoux C. Is dose de-escalation possible in sarcoma patients treated with enlarged limb sparing resection? Radiotherapy and oncology : journal of the European Society for Therapeutic Radiology and Oncology. 2017. | S |
| Lintz F, Moreau A, Odri GA, Waast D, Maillard O, Gouin F. Critical study of resection margins in adult soft-tissue sarcoma surgery. Orthopaedics & traumatology, surgery & research : OTSR. 2012;98(4 Suppl):S9-18. | P |
| Liu CY, Yen CC, Chen WM, Chen TH, Chen PC, Wu HT, et al. Soft tissue sarcoma of extremities: the prognostic significance of adequate surgical margins in primary operation and reoperation after recurrence. Annals of surgical oncology. 2010;17(8):2102-11. | I |
| Liu H, Yan Z, Liao G, Yin H. Treatment strategy of rectal gastrointestinal stromal tumor (GIST). Journal of surgical oncology. 2014;109(7):708-13. | I |
| Mahmoud AMA, Mahmoud M, Charaf A, Moneer MM. The profile of extremity and trunk soft tissue sarcoma in a tertiary referral center. Journal of the Egyptian National Cancer Institute. 2017;29(2):89-94. | S |
| Mangi AA, Smith BL, Gadd MA, Tanabe KK, Ott MJ, Souba WW. Surgical management of phyllodes tumors. Archives of surgery (Chicago, Ill : 1960). 1999;134(5):487-92; discussion 92-3. | I |
| Marcus SG, Merino MJ, Glatstein E, DeLaney TF, Steinberg SM, Rosenberg SA, et al. Long-term outcome in 87 patients with low-grade soft-tissue sarcoma. Archives of surgery (Chicago, Ill : 1960). 1993;128(12):1336-43. | S |
| Massi D, Beltrami G, Mela MM, Pertici M, Capanna R, Franchi A. Prognostic factors in soft tissue leiomyosarcoma of the extremities: a retrospective analysis of 42 cases. European journal of surgical oncology : the journal of the European Society of Surgical Oncology and the British Association of Surgical Oncology. 2004;30(5):565-72. | I |
| McGowan TS, Cummings BJ, O'Sullivan B, Catton CN, Miller N, Panzarella T. An analysis of 78 breast sarcoma patients without distant metastases at presentation. International journal of radiation oncology, biology, physics. 2000;46(2):383-90. | P |
| McKee MD, Liu DF, Brooks JJ, Gibbs JF, Driscoll DL, Kraybill WG. The prognostic significance of margin width for extremity and trunk sarcoma. Journal of surgical oncology. 2004;85(2):68-76. | I |
| Milone M, Pezzullo LS, Salvatore G, Pezzullo MG, Leongito M, Esposito I, et al. Management of high-grade retroperitoneal liposarcomas: personal experience. Updates in surgery. 2011;63(2):119-24. | S |
| Molina AS, Duprat Neto JP, Bertolli E, da Cunha IW, Fregnani J, Figueiredo PHM, et al. Relapse in dermatofibrosarcoma protuberans: A histological and molecular analysis. Journal of surgical oncology. 2018;117(5):845-50. | S |

| | |
|--|---|
| Montagnese A, Sturla M, Bruno I, Bracaglia R, Salgarello M, Seccia A, et al. Soft tissue sarcomas: research of prognostic factors and therapeutics scheme. Journal of experimental & clinical cancer research : CR. 2003;22(4 Suppl):219-22. | S |
| Morgan MB, Swann M, Somach S, Eng W, Smoller B. Cutaneous angiosarcoma: a case series with prognostic correlation. Journal of the American Academy of Dermatology. 2004;50(6):867-74. | P |
| Motanya JB, Saidi H. Recurrence and mortality after surgical treatment of soft tissue sarcomas. Annals of African Surgery. 2013;10(2):17-23. | S |
| Nishida Y, Tsukushi S, Nakashima H, Ishiguro N. Clinicopathologic prognostic factors of pure myxoid liposarcoma of the extremities and trunk wall. Clinical orthopaedics and related research. 2010;468(11):3041-6. | I |
| Nordal RR, Kristensen GB, Kaern J, Stenwig AE, Pettersen EO, Trope CG. The prognostic significance of surgery, tumor size, malignancy grade, menopausal status, and DNA ploidy in endometrial stromal sarcoma. Gynecologic oncology. 1996;62(2):254-9. | S |
| Novais EN, Demiralp B, Alderete J, Larson MC, Rose PS, Sim FH. Do surgical margin and local recurrence influence survival in soft tissue sarcomas? Clinical orthopaedics and related research. 2010;468(11):3003-11. | I |
| O'Donnell PW, Griffin AM, Eward WC, Sternheim A, Catton CN, Chung PW, et al. The effect of the setting of a positive surgical margin in soft tissue sarcoma. Cancer. 2014;120(18):2866-75. | I |
| Oksuz DC, Ozdemir S, Kaydihan N, Dervisoglu S, Hiz M, Tuzun H, et al. Long-term treatment results in soft tissue sarcomas of the thoracic wall treated with pre-or-postoperative radiotherapy--a single institution experience. Asian Pacific journal of cancer prevention : APJCP. 2014;15(22):9949-53. | S |
| Oxenberg J, Malhotra HK, Attwood K, Kane JM, Salerno K. Intraoperative radiation therapy for high risk soft tissue sarcoma resection margins. Journal of Solid Tumors. 2014;4(4):25-35. | S |
| Ozturk R, Aydin M, Arikian SM, Simsek MA, Toptas E, Gungor BS. Extremity soft tissue sarcomas of uncertain differentiation: Presentation, treatment and outcomes in a clinical series of 60 patients. Medical Journal of Bakirkoy. 2018;14(1):31-9. | S |
| Pasquali S, Gronchi A, Strauss D, Bonvalot S, Jeys L, Stacchiotti S, et al. Resectable extra-pleural and extra-meningeal solitary fibrous tumours: A multi-centre prognostic study. European journal of surgical oncology : the journal of the European Society of Surgical Oncology and the British Association of Surgical Oncology. 2016;42(7):1064-70. | P |
| Pawlik TM, Paulino AF, McGinn CJ, Baker LH, Cohen DS, Morris JS, et al. Cutaneous angiosarcoma of the scalp: a multidisciplinary approach. Cancer. 2003;98(8):1716-26. | I |
| Peiper M, Zurakowski D, Zornig C. Survival in primary soft tissue sarcoma of the extremities and trunk. Langenbecks Archiv fur Chirurgie. 1997;382(4):203-8. | I |
| Pisters PW, Pollock RE, Lewis VO, Yasko AW, Cormier JN, Respondek PM, et al. Long-term results of prospective trial of surgery alone with selective use of radiation for patients with T1 extremity and trunk soft tissue sarcomas. Annals of surgery. 2007;246(4):675-81; discussion 81-2. | I |
| Potter BK, Hwang PF, Forsberg JA, Hampton CB, Graybill JC, Peoples GE, et al. Impact of margin status and local recurrence on soft-tissue sarcoma outcomes. The Journal of bone and joint surgery American volume. 2013;95(20):e151. | I |
| Potter DA, Kinsella T, Glatstein E, Wesley R, White DE, Seipp CA, et al. | I |

| | |
|---|---|
| High-grade soft tissue sarcomas of the extremities. <i>Cancer</i> . 1986;58(1):190-205. | |
| Pradhan A, Cheung YC, Grimer RJ, Peake D, Al-Muderis OA, Thomas JM, et al. Soft-tissue sarcomas of the hand: oncological outcome and prognostic factors. <i>The Journal of bone and joint surgery British volume</i> . 2008;90(2):209-14. | S |
| Pradhan A, Grimer RJ, Abudu A, Tillman RM, Carter SR, Jeys L, et al. Epithelioid sarcomas: How important is loco-regional control? <i>European journal of surgical oncology : the journal of the European Society of Surgical Oncology and the British Association of Surgical Oncology</i> . 2017;43(9):1746-52. | S |
| Pritsch T, Bickels J, Winberg T, Malawer MM. Popliteal sarcomas: presentation, prognosis, and limb salvage. <i>Clinical orthopaedics and related research</i> . 2007;455:225-33. | S |
| Qadir I, Umer M, Umer HM, Uddin N, Karsan F, Rabbani MS. Managing soft tissue sarcomas in a developing country: are prognostic factors similar to those of developed world? <i>World journal of surgical oncology</i> . 2012;10:188. | I |
| Rabbani F, Wright JE, McLoughlin MG. Sarcomas of the spermatic cord: significance of wide local excision. <i>The Canadian journal of urology</i> . 1997;4(2):366-76. | I |
| Rhu J, Cho CW, Lee KW, Park H, Park JB, Choi YL, et al. Single-center experience with intra-abdominal liposarcoma: Optimal minimum duration for postoperative remnant tumor screening. <i>Medicine</i> . 2017;96(33):e7537. | P |
| Richter KK, Schmid C, Thompson-Fawcett M, Settmacher U, Altendorf-Hofmann A. Long-term follow-up in 54 surgically treated patients with gastrointestinal stromal tumours. <i>Langenbeck's archives of surgery</i> . 2008;393(6):949-55. | S |
| Rooser B. Prognosis in soft tissue sarcoma. <i>Acta orthopaedica Scandinavica Supplementum</i> . 1987;225:1-54. | C |
| Rosenberg SA, Tepper J, Glatstein E, Costa J, Baker A, Brennan M, et al. The treatment of soft-tissue sarcomas of the extremities: prospective randomized evaluations of (1) limb-sparing surgery plus radiation therapy compared with amputation and (2) the role of adjuvant chemotherapy. <i>Annals of surgery</i> . 1982;196(3):305-15. | S |
| Roses DF, Valensi Q, LaTrenta G, Harris MN. Surgical treatment of dermatofibrosarcoma protuberans. <i>Surgery, gynecology & obstetrics</i> . 1986;162(5):449-52. | S |
| Rossi CR, Foletto M, Alessio S, Menin N, D'Amore E, Rigon A, et al. Limb-sparing treatment for soft tissue sarcomas: influence of prognostic factors. <i>Journal of surgical oncology</i> . 1996;63(1):3-8. | I |
| Ruka W, Emrich LJ, Driscoll DL, Karakousis CP. Clinical factors and treatment parameters affecting prognosis in adult high-grade soft tissue sarcomas: a retrospective review of 267 cases. <i>European journal of surgical oncology : the journal of the European Society of Surgical Oncology and the British Association of Surgical Oncology</i> . 1989;15(5):411-23. | I |
| Rydholm A, Rooser B. Surgical margins for soft-tissue sarcoma. <i>The Journal of bone and joint surgery American volume</i> . 1987;69(7):1074-8. | C |
| Saddegh MK, Lindholm J, Lundberg A, Nilsson U, Kreicbergs A. Staging of soft-tissue sarcomas. Prognostic analysis of clinical and pathological features. <i>The Journal of bone and joint surgery British volume</i> . 1992;74(4):495-500. | S |
| Sadoski C, Suit HD, Rosenberg A, Mankin H, Efid J. Preoperative radiation, surgical margins, and local control of extremity sarcomas of soft tis- | I |

| | |
|---|---|
| sues. Journal of surgical oncology. 1993;52(4):223-30. | |
| Salas S, Bui B, Stoeckle E, Terrier P, Ranchere-Vince D, Collin F, et al. Soft tissue sarcomas of the trunk wall (STS-TW): a study of 343 patients from the French Sarcoma Group (FSG) database. Annals of oncology : official journal of the European Society for Medical Oncology. 2009;20(6):1127-35. | I |
| Salcedo Hernandez RA, Lino-Silva LS, de Leon DC, Herrera-Gomez A, Martinez-Said H, Meneses-Garcia A. Importance of tumor size in soft tissue sarcomas: a proposal for a nomogram based on a score system to staging soft tissue sarcomas in the postoperative setting. Medical oncology (Northwood, London, England). 2014;31(3):873. | I |
| Sambri A, Bianchi G, Cevolani L, Donati D, Abudu A. Can radical margins improve prognosis in primary and localized epithelioid sarcoma of the extremities? Journal of surgical oncology. 2017. | P |
| Sambri A, Bianchi G, Righi A, Ferrari C, Donati D. Surgical margins do not affect prognosis in high grade myxofibrosarcoma. European journal of surgical oncology : the journal of the European Society of Surgical Oncology and the British Association of Surgical Oncology. 2016;42(7):1042-8. | S |
| Sampo M, Tarkkanen M, Huuhtanen R, Tukiainen E, Bohling T, Blomqvist C. Impact of the smallest surgical margin on local control in soft tissue sarcoma. The British journal of surgery. 2008;95(2):237-43. | P |
| San Miguel I, San Julian M, Cambeiro M, Fernandez Sanmamed M, Vazquez-Garcia B, Pagola M, et al. Determinants of toxicity, patterns of failure, and outcome among adult patients with soft tissue sarcomas of the extremity and superficial trunk treated with greater than conventional doses of perioperative high-dose-rate brachytherapy and external beam radiotherapy. International journal of radiation oncology, biology, physics. 2011;81(4):e529-39. | S |
| Sawamura C, Matsumoto S, Shimoji T, Tanizawa T, Ae K. What are risk factors for local recurrence of deep high-grade soft-tissue sarcomas? Clinical orthopaedics and related research. 2012;470(3):700-5. | P |
| Schwarzbach MH, Hormann Y, Hinz U, Leowardi C, Bockler D, Mechtersheimer G, et al. Clinical results of surgery for retroperitoneal sarcoma with major blood vessel involvement. Journal of vascular surgery. 2006;44(1):46-55. | P |
| Scoccianti G, Ranucci V, Frenos F, Greto D, Beltrami G, Capanna R, et al. Soft tissue myxofibrosarcoma: A clinico-pathological analysis of a series of 75 patients with emphasis on the epithelioid variant. Journal of surgical oncology. 2016;114(1):50-5. | I |
| Sherman KL, Wayne JD, Chung J, Agulnik M, Attar S, Hayes JP, et al. Assessment of multimodality therapy use for extremity sarcoma in the United States. Journal of surgical oncology. 2014;109(5):395-404. | O |
| Shouman T, Gameel M, Attia A, El-Aziz SA, Mohamed N. Soft tissue sarcomas of the head and neck: Outcome and prognostic factors. International journal of clinical oncology. 2000;5(4):269-75. | I |
| Singer S, Baldini EH, Demetri GD, Fletcher JA, Corson JM. Synovial sarcoma: prognostic significance of tumor size, margin of resection, and mitotic activity for survival. Journal of clinical oncology : official journal of the American Society of Clinical Oncology. 1996;14(4):1201-8. | I |
| Sista F, Pessia B, Abruzzese V, Cecilia EM, Schietroma M, Carlei F, et al. Twelve years of gastric GIST A retrospective study of laparoscopic and open approach. Annali italiani di chirurgia. 2015;86(4):349-56. | S |
| Song B, Lee K, Lee C, Moon KC. Prognostic significance of microscopic tumor extension in local recurrence of myxofibrosarcoma and undifferentiated pleomorphic sarcoma. Pathology international. 2018. | P |

| | |
|---|---|
| Song S, Park J, Kim HJ, Kim IH, Han I, Kim HS, et al. Effects of Adjuvant Radiotherapy in Patients With Synovial Sarcoma. <i>American journal of clinical oncology</i> . 2017;40(3):306-11. | S |
| Tanabe KK, Pollock RE, Ellis LM, Murphy A, Sherman N, Romsdahl MM. Influence of surgical margins on outcome in patients with preoperatively irradiated extremity soft tissue sarcomas. <i>Cancer</i> . 1994;73(6):1652-9. | S |
| Tang YW, Lai CS. The significance of close but negative excision margin for treatment of soft-tissue sarcoma. <i>Annals of plastic surgery</i> . 2012;69(6):633-6. | S |
| Tsagozis P, Bauer HC, Styring E, Trovik CS, Zaikova O, Brosjo O. Prognostic factors and follow-up strategy for superficial soft-tissue sarcomas: Analysis of 622 surgically treated patients from the scandinavian sarcoma group register. <i>Journal of surgical oncology</i> . 2015;111(8):951-6. | I |
| Venigalla S, Carmona R, VanderWalde N, Sebro R, Sharma S, Simone CB, 2nd, et al. Disparities in Perioperative Radiation Therapy Use in Elderly Patients With Soft-Tissue Sarcoma. <i>International journal of radiation oncology, biology, physics</i> . 2018;102(1):155-65. | O |
| Venigalla S, Nead KT, Sebro R, Guttman DM, Sharma S, Simone CB, 2nd, et al. Association Between Treatment at High-Volume Facilities and Improved Overall Survival in Soft Tissue Sarcomas. <i>International journal of radiation oncology, biology, physics</i> . 2018;100(4):1004-15. | S |
| Vogel P, Bolder U, Scherer MN, Schlitt HJ, Jauch KW. Long-term outcome after multivisceral and tumor/vascular resection in patients with soft tissue sarcoma. <i>Langenbeck's archives of surgery</i> . 2009;394(2):331-7. | P |
| Vos M, Kosela-Paterczyk H, Rutkowski P, van Leenders GJLH, Norman-towicz M, Lecyk A, et al. Differences in recurrence and survival of extremity liposarcoma subtypes. <i>European Journal of Surgical Oncology</i> . 2018;44(9):1391-7. | I |
| Willeumier J, Fiocco M, Nout R, Dijkstra S, Aston W, Pollock R, et al. High-grade soft tissue sarcomas of the extremities: surgical margins influence only local recurrence not overall survival. <i>International orthopaedics</i> . 2015;39(5):935-41. | I |
| Wong P, Han K, Sykes J, Catton C, Laframboise S, Fyles A, et al. Post-operative radiotherapy improves local control and survival in patients with uterine leiomyosarcoma. <i>Radiation oncology (London, England)</i> . 2013;8:128. | S |
| Wong WW, Hirose T, Scheithauer BW, Schild SE, Gunderson LL. Malignant peripheral nerve sheath tumor: analysis of treatment outcome. <i>International journal of radiation oncology, biology, physics</i> . 1998;42(2):351-60. | S |
| Woo KJ, Bang SI, Mun GH, Oh KS, Pyon JK, Lim SY. Long-term outcomes of surgical treatment for dermatofibrosarcoma protuberans according to width of gross resection margin. <i>Journal of plastic, reconstructive & aesthetic surgery : JPRAS</i> . 2016;69(3):395-401. | I |
| Wu Y, Li C, Zhong Y, Guo W, Ren G. Head and neck rhabdomyosarcoma in adults. <i>The Journal of craniofacial surgery</i> . 2014;25(3):922-5. | I |
| Yoneda Y, Kunisada T, Naka N, Nishida Y, Kawai A, Morii T, et al. Favorable outcome after complete resection in elderly soft tissue sarcoma patients: Japanese Musculoskeletal Oncology Group study. <i>European journal of surgical oncology : the journal of the European Society of Surgical Oncology and the British Association of Surgical Oncology</i> . 2014;40(1):49-54. | I |
| Zagars GK, Goswitz MS, Pollack A. Liposarcoma: outcome and prognostic factors following conservation surgery and radiation therapy. <i>International journal of radiation oncology, biology, physics</i> . 1996;36(2):311-9. | S |

| Ausgeschlossene Volltexte Rechercheauftrag Chirurgie-Strahlentherapie | Ausschluss- grund |
|---|----------------------|
| Adjuvant chemotherapy for localised resectable soft tissue sarcoma in adults. The Cochrane database of systematic reviews. 2000(4):Cd001419. | I |
| Abouarab MH, Salem IL, Degheidy MM, Henn D, Hirche C, Eweida A, et al. Therapeutic options and postoperative wound complications after extremity soft tissue sarcoma resection and postoperative external beam radiotherapy. International wound journal. 2017. | S |
| Al-Absi E, Farrokhyar F, Sharma R, Whelan K, Corbett T, Patel M, et al. A systematic review and meta-analysis of oncologic outcomes of pre- versus postoperative radiation in localized resectable soft-tissue sarcoma. Annals of surgical oncology. 2010;17(5):1367-74. | S |
| Albertsmeier M, Rauch A, Roeder F, Hasenhuttl S, Pratschke S, Kirschneck M, et al. External Beam Radiation Therapy for Resectable Soft Tissue Sarcoma: A Systematic Review and Meta-Analysis. Annals of surgical oncology. 2017. | S |
| Alekhteyar KM, Leung DH, Brennan MF, Harrison LB. The effect of combined external beam radiotherapy and brachytherapy on local control and wound complications in patients with high-grade soft tissue sarcomas of the extremity with positive microscopic margin. International journal of radiation oncology, biology, physics. 1996;36(2):321-4. | S |
| Budach V. [The advantage of adjuvant radiotherapy in soft-tissue sarcomas--the results of a prospective randomized study]. Strahlentherapie und Onkologie : Organ der Deutschen Rontgengesellschaft [et al]. 1998;174(10):542-4. | S |
| Chen YT, Tu WT, Lee WR, Huang YC. The efficacy of adjuvant radiotherapy in dermatofibrosarcoma protuberans: a systemic review and meta-analysis. Journal of the European Academy of Dermatology and Venereology : JEADV. 2016;30(7):1107-14. | S |
| Qu X, Lubitz CC, Rickard J, Bergeron SG, Wasif N. A Meta-Analysis of the Association Between Radiation Therapy and Survival for Surgically Resected Soft-Tissue Sarcoma. American journal of clinical oncology. 2016. | S |
| Reed NS, Mangioni C, Malmstrom H, Scarfone G, Poveda A, Pecorelli S, et al. Phase III randomized study to evaluate the role of adjuvant pelvic radiotherapy in the treatment of uterine sarcomas stages I and II: an European Organisation for Research and Treatment of Cancer Gynaecological Cancer Group Study (protocol 55874). European journal of cancer. 2008;44(6):808-18. | P |
| Reed NS, Mangioni C, Malmström H, Scarfone G, Poveda A, Pecorelli S, et al. Corrigendum to "Phase III randomized study to evaluate the role of adjuvant pelvic radiotherapy in the treatment of uterine sarcomas stages I and II: An European Organisation for Research and Treatment of Cancer Gynaecological Cancer Group Study (protocol 55874)" [European Journal of Cancer, 44 (2008) 808-818] (DOI:10.1016/j.ejca.2008.01.019). European journal of cancer. 2008;44(11):1612. | P |
| Rhomberg W, Hassenstein EO, Gefeller D. Radiotherapy vs. radiotherapy and razoxane in the treatment of soft tissue sarcomas: final results of a randomized study. International journal of radiation oncology, biology, physics. 1996;36(5):1077-84. | C |
| Rosenberg SA, Kent H, Costa J, Webber BL, Young R, Chabner B, et al. Prospective randomized evaluation of the role of limb-sparing surgery, radi- | C |

| | |
|---|---|
| ation therapy, and adjuvant chemoimmunotherapy in the treatment of adult soft-tissue sarcomas. Surgery. 1978;84(1):62-9. | |
| Rosenberg SA, Tepper J, Glatstein E, Costa J, Baker A, Brennan M, et al. The treatment of soft-tissue sarcomas of the extremities: prospective randomized evaluations of (1) limb-sparing surgery plus radiation therapy compared with amputation and (2) the role of adjuvant chemotherapy. Annals of surgery. 1982;196(3):305-15. | P |

| | |
|--|------------------------------|
| Ausgeschlossene Volltexte Rechercheauftrag Rehabilitation | Ausschluss- grund |
| Shin, K.Y., et al., Inpatient cancer rehabilitation: the experience of a national comprehensive cancer center. Am J Phys Med Rehabil, 2011. 90(5 Suppl 1): p. S63-8. | O |

| | |
|---|------------------------------|
| Ausgeschlossene Volltexte Rechercheauftrag Psychoonkologie | Ausschluss- grund |
| Greer, J., et al., Randomized trial of a cognitive-behavioral therapy mobile app for anxiety in patients with incurable cancer. Journal of Clinical Oncology, 2017. 35(15). | P |

Referenzen

1. Guyatt GH, OA, Vist GE, Kunz R, Falck-Ytter Y, Alonso-Coello P,. GRADE: an emerging consensus on rating quality of evidence and strength of recommendations. BMJ. 2008;336(7650):924-6.
2. Balshem HH, M; Schunemann H.J.; Oxman, A.D.; Kunze, R; Brozek, J; Vist, G.E.; Falck-Ytter, Y; Meerpohl, J; Norris, S; Guyatt, G.H.;. GRADE guidelines: 3. Rating the quality of evidence. Journal of Clinical Epidemiology. 2011;64(4):401-6.
3. Guyatt GO, AD; Vist, G; Kunz, R; Brozek, J; Alonso-Coello, P; Montori, V; Akl, E.A.; Djulbegovic, B; Falck-Ytter, Y; Norris, S.L.; Williams, J.W.; Atkins, D.Jr.; Meerpohl, J; Schünemann, H.J.;. GRADE guidelines: 4. Rating the quality of evidence--study limitations (risk of bias). Journal of Clinical Epidemiology. 2011;64(4):407-15.
4. Higgins JPT AD, Sterne JAC (editors). . Chapter 8: Assessing risk of bias in included studies. . In: In: Higgins JPT GSe, editor. Cochrane Handbook for Systematic Reviews of Interventions Version 5.10 (updated March 2011) The Cochrane Collaboration, 2011; 2011.
5. Ottawa Hospital Research Institute; Wells GS, B; O'Connell, D; Peterson, J; Welch, V; Losos, M; Tugwell, P;. The Newcastle-Ottawa Scale (NOS) for assessing the quality of nonrandomised studies in meta-analyses 2019 [Available from: http://www.ohri.ca/programs/clinical_epidemiology/oxford.asp.
6. Community C. Review Manager 5 (RevMan 5) 2014 [Available from: <https://community.cochrane.org/help/tools-and-software/revman-5>.

| | |
|-------------------------------------|----------------|
| Versionsnummer: | 1.0 |
| Erstveröffentlichung: | 09/2021 |
| Nächste Überprüfung geplant: | 09/2026 |

Die AWMF erfasst und publiziert die Leitlinien der Fachgesellschaften mit größtmöglicher Sorgfalt - dennoch kann die AWMF für die Richtigkeit des Inhalts keine Verantwortung übernehmen. **Insbesondere bei Dosierungsangaben sind stets die Angaben der Hersteller zu beachten!**

Autorisiert für elektronische Publikation: AWMF online